



Guide winter/summer 2025

flaine.com





WHO SAYS WE NEED A BIRTHDAY CAKE?



parcasterix.fr/en

Welcome to Flaine, a ski resort full of surprises!

A DOORSTEP SKIING RESORT WITH A PEDESTRIANISED CENTRE

Enjoy all the joys of a bustling resort that offers the advantages of a **compact pedestrianised centre** with services, shops and ski runs all just a stone's throw from your accommodation.

A SURPRISING ACCESSIBLE RESORT

Just an hour's drive from Geneva airport, 2 hour's drive from Lyon and 4 hours from Paris by TGV, Flaine is **unquestionably your local resort**.

A 360° RESORT

We'll take you to the Grandes Platières summit at an altitude of 2,500 metres, where the beauty of the landscapes will blow you away: 360° views over the **Mont Blanc, Aravis, Belledonne and Jura** mountain ranges.

HOME TO AMAZING SKIING

The resort is nestled in **the peaks of the 4th largest interconnected ski areas in France, Le Grand Massif** (Flaine – Les Carroz – Morillon – Samoëns – Sixt).

A RESORT WITH EXCEPTIONAL SNOW-COVER

Nestling at **altitudes of 1,600 to 2,500 metres**, Flaine enjoys a unique **geographical location** at the heart of a natural cirque, boasting fantastic snow cover right up until the end of the season.

FLAINE SUMMER PASS

Summer in Flaine is free!*

Access to over 35 free activities and entertainments* with a simple wristband.

**Offer combined with a stay at a participating accommodation partner*

CLASSIFIED RESORT

"Le Flaine Historique" was awarded the **"20th Century Heritage"** label and some buildings are **classified as "Historic Monuments"**. This is also an open-air museum with **Dubuffet, Picasso and Vasarely** monumental artwork.

A RESORT COMMITTED TO THE ENVIRONMENT

Flaine has been committed to the environment with the environmental observatory since 2007. The Grand Massif ski area continues its sustainable approach by implementing concrete actions to reduce its pressure on the environment with an action plan by 2030.

Summary

ACTIVITIES 04	28 FLAINE IN SUMMER
HERITAGE 11	32 SHOPS & SERVICES
PISTE MAP 12	35 ENVIRONMENT
FLAINE IN WINTER 14	36 ACCOMMODATIONS
FAMILY & ENTERTAINMENT 17	46 SPORT SHOPS
SKI LESSONS 19	48 EASY ACCESS & TRANSPORT
BARS & RESTAURANTS 23	50 RESORT MAP
FOOD SHOPS 27	

DEEP[®] NATURE

A moment of wellness
in the heart of the mountains



Deep Nature Flaine Spa

Les Terrasses d'Hélios
Lieu dit Les Gérats
74300 Flaine
Tel : +33 (0)4 50 55 94 73
E-mail : flaine@deepnature.fr





TOTEM
Privately owned by Flaine

Spa Le Totem
Your wellness experience

3 treatment rooms including 1 duo
2 saunas and 1 outdoor jacuzzi
Fitness room + Relaxation area

Flaine Forum | +33 4 90 05 03 52
www.terminaleinagetotem.com

SPA NUXE

ACCESSIBLE UPON
RESERVATION
OF A TREATMENT

**ROCKY
POP** rockypop.com



SPA MONTAGNES DU MONDE[®]
OPEN TO NON-RESIDENTS

ALHÉNA
HOTEL - RESIDENCE - SPA
+33 (0)4 85 58 24 45





RESORT'S AQUATIC CENTRE ❄️🌸

2,000 m² dedicated to your well-being! 25m swimming pool and children's paddling pool - sauna - turkish bath - hydrotherapy tubs - aquagym - aquabike.

Open to all resort guests.

Tel. +33 (0)4 50 90 47 46

Flaine Forum

FITNESS AND CARDIO-TRAINING ROOM ❄️🌸

Various cardio and weight training devices are available to help you get back in shape or improve your training: treadmill, bike, weight benches...

Tel. +33 (0)4 50 90 47 46

Flaine Forum

DEEP NATURE FLAINE SPA ❄️🌸

Take full benefit of the fresh air and prolong your relaxation in the indoor space of the Deep Nature spa, with sauna, hammam, sensory and Norwegian shower and herbal tea area. Enjoy Deep Nature's signature personalized treatments.

Tel. +33 (0)4 50 55 94 73

Les Terrasses d'Hélios residence - Flaine Les Gérats

NUXE SPA ❄️

Nestled in the heart of the new RockyPop Flaine, located in Forum area, the Spa Nuxe is the perfect place to take care of yourself. By choosing a **prodigious Nuxe care or massage**, you access the 400 sqm spa facilities including swimming pool, Kneipp path, sauna and hammam in a zen and resourcing atmosphere...

Tel. +33 (0)4 80 16 12 21

RockyPop Flaine Hotel & Spa - Flaine Forum

TOTEM SPA ❄️

Has 3 treatment rooms (including one in duo) where you will discover **signature face and body treatments dedicated to your well-being**. The Wellness area consists of a fitness room, two saunas and a relaxation area extending onto the outdoor terrace with breathtaking views over the mountains. Here in the open air, the jacuzzi will take you to the peak of relaxation.

Tel. + 33 (0)4 30 05 03 52

Totem Hotel - Flaine Forum

MONTAGNE DU MONDE SPA ❄️🌸

Rejuvenate in the exclusive Spa Montagnes du Monde® wellness area, a spa with heated indoor pool where you can enjoy a sauna, hammam, whirlpool or Nordic bath as well as a variety of beauty treatments and relaxing massages.

Tel. +33 (0)4 85 58 24 45

Alhénéa Hotel & Spa - Flaine Forum



Sporting activities

CITY GAME ❄️❄️

Criss-cross the resort in search of major artworks and try to find answers to puzzles to solve their mysteries. A fun way to explore Flaine with the family!

2 formulas according to ages and levels.

Discount with Flaine Summer Pass.

Flaine tourist office

Tel. +33 (0)4 50 90 80 01 • www.flaine.com

CLIMBING ❄️

4 natural sites and 1 artificial wall in Flaine.

Cœur de montagne

Tel. +33 (0)6 66 95 20 87 • rodrigomoraga@yahoo.fr

CROSS-COUNTRY SKIING ❄️

3 runs for all to discover.

Free access.

Access by free shuttles.

DOG SLEDDING ❄️

Share a special moment with dogs! Supervised by professionals, learn how to mush, or just sit back comfortably as you travel over the snow-covered trails (over 3s).

Evasion nordique

Tel. +33 (0)6 82 09 50 03

www.evasion-nordique.com

Les Granges de Heidi

Tel. +33 (0)6 66 46 10 97

www.lesgrangesdeheidi.fr

ESCAPE BOX ❄️

Locked in a chalet, participants must work together to conduct the investigation and solve, in 1 hour, the puzzles that allow them to save "the soul of the pirate".

Discount with Flaine Summer Pass.

Flaine tourist office

Tel. +33 (0)4 50 90 80 01 • www.flaine.com

FISHING ❄️

In lakes of Flaine, Vernant, Airon and in the rivers, license on sale at the Tourist Office.

Fishing initiation workshop: A qualified instructor helps prepare materials and provides guidance throughout the session. Fishing rod and bait are provided and included.

Discount with Flaine Summer Pass.

Flaine tourist office

Tel. +33 (0)4 50 90 80 01 • www.flaine.com

GEOCACHING ❄️

Halfway between a treasure hunt and orienteering, geocaching is to find small boxes filled with trinkets, the "caches" hidden by insiders in picturesque corners or after a beautiful walk. Everything, GPS in hand! Take to the game during your summer holiday and try to find the "caches" in Flaine!

Geocaching app.

Ice Quad - Ice tour

Hiring quads kids and adults, buggy
Evening party with dinner
Seminars, multi-activity

Booking: +33(0)6 21 09 99 02

From 8.00am to 9.00pm

icequadflaine@gmail.com

www.icequad.fr



ICE DRIVING SCHOOL



PILOTAGE
SUR **GLACE** flaine

Prices:

• Try-out: €50

• Discovery course for 1h30: €210

École de Pilotage sur Glace
74300 FLAINE

Tel. +33 (0)4 50 90 82 59
www.circuitglace.com

GOLF ❁

You'll get your fill in Flaine and Le Grand Massif! Set off to discover new activities, for guaranteed thrills! **At 1,900 metres, it is one of the highest golf course in Europe**, with breath-taking panoramic views over the Aravis mountain range. **A leading mountain golf course.** Flaine golf course is unique thanks to its technically challenging, spectacular course. Lasting 4½ hours, with fun inclines it's somewhere to enjoy an intense day of sports. Before setting off on the **18-hole course**, why not spend some time warming up on our various **putting greens, practice zones, approach areas and training bunkers**. With a range of varied difficulty levels, this course is **accessible to all golf licence holders, no handicap required**: amateur and experienced players, children and adults alike.

Open from July to September.

Tel. +33 (0)4 50 90 85 44 (in season)

www.golf-flaine-lescarroz.fr

GRAVITY ZERO ❁

Try the "Zero Gravity" experience, you will be propelled through the void at breakneck speed! Sensible soul to withhold!

Flaine Forêt at the arrival of Télébienne | from 6 years old | min. 20kg

Booking at Grandes Platières cable car or on www.grand-massif.com

GUIDED HIKES AND MOUNTAIN BIKE TOURS ❁

Philippe, a mountain guide and mountain bike instructor, offers themed walks for a day or several days.

Flaine mountain

Tel. +33 (0)6 03 29 44 86 • contact@flaine-mountain.com

ÉVASION NORDIQUE

Introduction to drive dog harnessing

Tel. +33 (0)6 82 09 50 03

evasion.nordique.74@wanadoo.fr

www.evaison-nordique.com



Dog-sled rides in winter and in summer.

Les Granges de Heidi

Tel. +33 (0)6 66 46 10 97

www.lesgrangesdeheidi.fr

SNOWMOBILE

Located between

Les Carroz and Flaine

Tel. +33 (0)6 12 21 40 60

www.deltaevasion.com



HAVE A BALL! ❁

Children can try their hand at rolling a beautiful wooden ball decorated with the resort logo around an outdoor course.

Ball for sale at Tourist office.

HOT-AIR BALLOON FLIGHT ❁❁

Thanks to their perfect knowledge of the aerology of the Alps, the pilots will make you discover spectacular flights, overlooking the surrounding massifs. Alone or in pairs, experience a hot-air balloon flight in the early morning to benefit from the best conditions.

La Compagnie des Ballons

Tel. +33 (0)4 50 63 38 10 • www.compagniedesballons.com

ICE DRIVING ❁

There are certain similarities between steering your skis and steering a car: acceleration, braking, negotiating corners... Whether fast or taking it easy, the ice-driving school offers a range of packages: from introductions to multi-day courses for learning how to master a vehicle on an ice-covered road.

Tel. +33 (0)4 50 90 82 59 • www.circuitglace.com

ICE QUAD AND BUGGY RZR 800 ❁

Experience life as a racing driver, behind the wheel of a buggy or quad bike, on a 700-metre ice track. Children can be just like the grown-ups with quad bikes accessible from the age of 7.

Tel. +33 (0)6 21 09 99 02 • www.icequad.fr

ICE RINK ❁

Little ones and grown-ups will love gliding on the natural outdoor ice rink. It opens in the morning for electric quad biking for the over 4s and in the afternoon for skating for the over 3s.

Flaine Forum

KID'S QUAD ❁

Quads for kids from 3 to 15 years old.

Discount with Flaine Summer Pass.

Tel. +33 (0)6 21 09 99 02 • kidsquadflaine@gmail.com

MAISON DE LA MONTAGNE ❁

With outings to suit all abilities, our mountain guides will help you discover Flaine and the surrounding area: hiking, mountain biking, climbing, via ferrata, caving, white water sports...

Tel. +33 (0)4 50 90 81 00



PARAPENTE AIR PASSION

Tandem flight approved by FFVL

Tel. +33 (0)6 85 75 03 81

contact@airpassionlescarroz.fr
www.airpassionlescarroz.fr

Facebook :
AirPassionParapenteLesCarroz

MARKED TRAILS FOR WALKING AND SNOWSHOEING ❄️

Flaine is a rare beauty for you to discover. For snowshoeing and walking, maintained, marked trails are **free to access** and situated at the Col de Pierre Carrée.
Access by free shuttle.

MOUNTAIN KART ❄️🌸

Hit the slopes on an all-terrain kart and live a unique and fun experience!

Descents from Aup de Vêran cable car in winter and on Ballacha in summer.

Reservations at the ticket offices of the Grandes Platières cable car or on www.grand-massif.com

OUTDOOR GAME AROUND MOUNTAIN LAKES 🌸

This treasure hunt with a storyline will help you discover 3 of Flaine's nearby lakes. A wonderful way to hike and get kids walking with a fun goal.

Free game with avec Géodyssée app.

OUTDOOR LASER TAG 🌸

Just like paintball, this is played in the same way, but without getting hurt, for guaranteed fun! You can play the role of a sniper with super accuracy thanks to the telescopic sight!

From 7 years old. Discount with Flaine Summer Pass.

Flaine tourist office

Tel. +33 (0)4 50 90 80 01 • www.flaine.com

PARAGLIDING ❄️🌸

Combine thrills with breath-taking panoramic views by flying over the snow-capped mountains in a paraglider. With accompanied first flights, introductory and improvers flights offered as part of courses, discover the ski area and Flaine resort as you've never seen it before!

• Air passion
Tel. +33 (0)6 85 75 03 81
www.airpassionlescarroz.fr
• École du Ski Français
Tel. + 33 (0)4 50 90 81 00
www.esf-flaine.fr

• Flaine Parapente
Tel. +33 (0)6 60 08 81 79
www.flaine-parapente.com
• Parapente Planète
Tel. +33 (0)4 50 18 57 18
+33 (0)6 52 94 33 81
www.parapente-planete.com

SLEDGE ❄️

Three toboggan runs let all ages glide to their heart's content. Located in Flaine Forum, under the iconic Jean Dubuffet sculpture and at the Col de Pierre Carrée (red zone for the over 6s and black for the over 12s).

Free access.

PARAPENTE PLANÈTE
VOLS BIPLACE
ENSEIGNEMENT
Ecole professionnelle labellisée FFVL

- Tandem paragliding Flights
- Basic & advanced Courses

Summer office : **Ski2000 ProShop Bootfitting**
1 route du Servery 74300 LES CARROZ

☎ +33-(0)6-52-94-33-81
www.parapente-planete.com

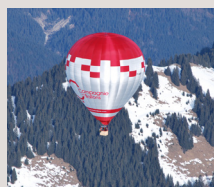
FFVL
Fédération Française de Vol Libre
EFVL
Ecole Française de Vol Libre
ancv
CHEQUE VACANCES

MAISON DE LA MONTAGNE ALDPS FLAINE

Supervised activities and outings during the summer.

Tel. +33 (0)4 50 90 81 00

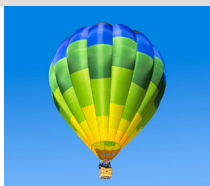
- Hiking
- E-Mountain Biking
- Climbing
- Canyoning
- Potholing
- Via Ferrata
- Rafting / Air boat / Canoraft / Hydrospeed
- And many more...



HOT AIR BALLOON La Compagnie des Ballons

Through their expert knowledge of aerological atmosphere, the hot-air balloon practise has reached the highest level and through this you will discover incredible flights.

+33 4 50 63 38 10
contact@compagniedesballons.com
www.compagniedesballons.com



FLAINE PARAPENTE

Paragliding

Tel. +33 (0)6 60 08 81 79

brosinl@hotmail.com

www.flaine-parapente.com

CŒUR DE MONTAGNE

CLIMBING - CANYONING

VIA FERRATA

Tel. +33 (0)6 66 95 20 87

rodrigomoraga@yahoo.fr

SNOWKITE ❄️

Pulled along by the wind, set off to conquer vast expanses of snow... on a snowkite! A winter version of kitesurfing, it's an activity that offers an intense rush of freedom! Defy the laws of gravity and enjoy an exceptional, peaceful setting!

Equipment not supplied - Intermediate level required

Flaine Master Class

Tel. +33 (0)4 50 90 87 16 • www.ski-rental-flaine.com

SNOWMOBILE ❄️

Set off on a snowmobile adventure for an unusual ride that's full of surprises and breath-taking landscapes! The rides take place after night fall, on ski runs and through forestland.

From 1.35m for passengers.

Nature Motoneige

Tel. + 33 (0)6 12 21 40 60 • www.deltaevasion.com

SNOWSHOEING HIKES IN GROUP ❄️

To unveil the secrets of this beautiful natural setting, call upon a professional! Our service providers organise group snowshoeing hikes. When night falls, don your snowshoes for a star-lit hike before enjoying an authentic Savoyard meal.

• **École du Ski Français**
Tel. + 33 (0)4 50 90 81 00
www.esf-flaine.fr

• **Flaine Master Class**
Tel. +33 (0)4 50 90 87 16
www.ski-rental-flaine.com.

• **Flaine Mountain**
Tel. +33 (0)6 03 29 44 86
www.ecole-ski-flaine.fr

TENNIS 🌸

4 artificial lawn courts at the heart of an exceptional setting.

Equipment loans (deposit required) and free access with Flaine Summer Pass.

Flaine tourist office

Tel. +33 (0)4 50 90 80 01 • www.flaine.com

TRAIL RUNNING ❄️🌸

Embark on a trail running session in Flaine and admire a wealth of different landscapes, from exceptional views over the Mont Blanc massif to the mountainous balconies overlooking the Arve Valley. In the winter, you'll have the choice between trying out all 3 trails, or something more physically demanding with 2 timed challenges. And in the summer, you'll run over marked routes, but don't forget to bear in mind the altitude.

This free app "Flaine Les Carroz espace outdoor" will be a real navigation aid to anyone who's never without their phone.

TREETOP ADVENTURE TRAILS 🌸

These 2 courses offers pathways where acrobatic workshops take place: Tarzan jump, monkey bridge, zip line or more unusual workshops, you will rub shoulders with the treetops.

From 1.40m and from 1.25m (accompagnied).. Discount with Flaine Summer Pass.

Flaine tourist office

Tel. +33 (0)4 50 90 80 01 • www.flaine.com

YOGA ❄️🌸

These easy, accessible routes includes 10 Yoga postures to carry out individually or with friends, in winter and summer.

Accessible via free shuttlebus or, if you're feeling fit, on foot from the resort centre.

In winter, the mountain professionals of Flaine offer **coaching and outings in telemark, touring skiing, splitboard, freeride riding, freestyle riding, speed-riding and cross-country skiing.**

On Grand Massif AREA 🌸

VIA FERRATA ET CANYONING

Cœur de montagne

Tel. +33 (0)6 66 95 20 87
rodrigomoraga@yahoo.fr

CANIRANDO AND CANIWALK

Dog-sled rides.

Evasion Nordique
Tel. +33 (0)6 82 09 50 03
www.evasion-nordique.com

Les Granges de Heidi
Tel. +33 (0)6 66 46 10 97
www.lesgrangesdeheidi.fr

POTHOLING

Maison de la montagne

Tel. +33 (0)4 50 90 81 00

RAFTING, CANORAF, HYDROSPEED, AIRBOAT

You'll find the very best in white water sports on Grand Massif.

Maison de la montagne

Tel. +33 (0)4 50 90 81 00

Cultural & musical activities



ART CENTRE ❄️ 🌸

Combining sports and culture, Flaine invites you to its Art Centre which hosts a series of contemporary artist's exhibitions.

LIBRARY ❄️ 🌸

The Art Centre has lending library including books in English, a multimedia zone, a youth section with a reading corner.

HERITAGE GUIDED TOUR ❄️ 🌸

Would you like to find out more about the creation of this unusual resort? A guided tour is available free of charge so you can discover Flaine's architectural and artistic heritage.

To discover this unaccompanied Art trail, QR codes have been installed near the works. Just scan them with a smartphone.

Art centre
Tel. +33 (0)4 50 90 4173
Flaine Forum
www.centredartdeflaine.com

FLAINE ART CENTRE

Contemporary Art exhibitions, lending library, cultural guided tour...

Open from Sunday to Friday - 4pm to 7pm.

Flaine Forum - Tel. +33 (0)4 50 90 4173
centre.art@flaine.com - www.centredartdeflaine.com

MUSIC, A PRESTIGIOUS HERITAGE 🌸

Classical music has had a presence in the resort right from the start, holding a very special place in the heart of Flaine locals. Throughout the summer, many free concerts are offered in the magnificent Flaine auditorium.

Three music academies continue the tradition of high-level music teaching, placing the emphasis on excellent working conditions for both teachers and pupils.

Académie Internationale de Musique
www.aimdeflaine.com

Opus 74
www.opus74-flaine.com

Musique à Flaine
www.musiqueaflaine.fr

Station Bauhaus

A Bauhaus resort set at the heart of a natural cirque at an altitude of 1,600 metres? That's Flaine for you!

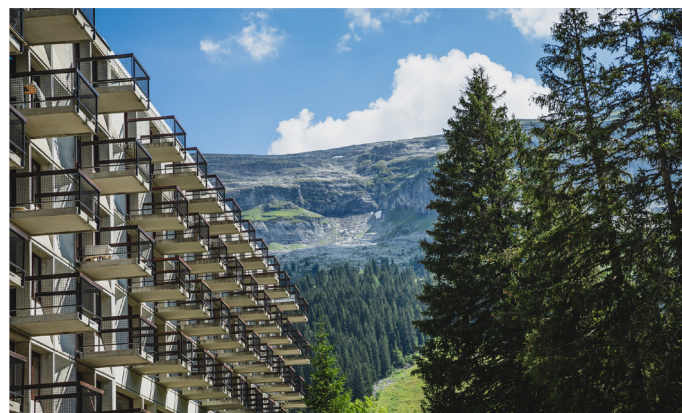
With its unique architecture, Flaine was built in the 1960's by Éric and Sylvie Boissonnas, art patrons of the 20th Century who loved both modern art and classical music. They called upon the services of Bauhaus master, Marcel Breuer, world-renowned for works such as the Unesco headquarters in Paris and the Whitney Museum in New York. He decided to create **a prototype for town planning, architecture and design** at the heart of a natural cirque, with the golden rule being to respect nature, integrating the resort into the mountains without disturbing the surroundings.

Flaine is an example of architecture and urban development, with **an interplay of light and shadow** depending on the sun's position as it hits the concrete buildings, **their façades cut like diamonds**. Breuer succeeded in creating an original design that is fascinating, resolutely **modern and radical**. Whilst the exposed **concrete buildings** continue to surprise, they also **reflect the nearby limestone formation**, blending perfectly into their rocky surroundings



A listed resort in a class all of its own

A true gem of French heritage, the highly original resort of Flaine has been awarded many titles, with historical Flaine (Flaine Forum + Flaine Front de neige + Flaine Forêt) **receiving the "20th Century Heritage" label**. Its exceptional heritage includes an ecumenical chapel **listed as a Historic Monument** since December 2014, "Le Flaine" hotel, which defies gravity and gives the impression of being suspended mid-air, and the "Bételgeuse" building, which accentuates the resort's contrasts with its "diamond point" façades. The latter two buildings have been **included in the French supplementary list of historic monuments** since 1991.



An Arty Resort

Master architects and contemporary artists created Flaine's built heritage to showcase the beauty of the landscapes, adorning it with remarkable sculptures. It's the only resort in the world to have monumental and architectural artworks on permanent display, notably including Dubuffet's "Le Boqueteau", Picasso's "La Tête de femme", as well as Vasarely's "Les Trois Hexagones"!

Flaine is also a genuine open-air museum !

A free guided tour of the resort's artistic and architectural heritage during the season.

GrAND MASSIF



AIGUILLE VERTE ▲
4122m

GRANDES JORASSES ▲
4208m

FUN ZONES

1 Les Cascades - 14 km de descente en pleine nature
14 km of descent through pristine nature

FLAINE

- 1 Quartz Park
- 1 Urban'z
- 1 Funny Slope

LES CARROZ

- 1 Cool Zone de l'Oasis
- 1 Boardercross
- 1 Luge sur rail "Speed Dragon"

MORILLON

- 1 Marvel Enchantée
- 1 KidzPark
- 1 Boarder

SAMOËNS

- 1 SeptiSnake
- 1 La Forêt Myztérieuse de ZiziPanpan
- 1 Drop-Zone

FREERIDE ZONES

Pistes sécurisées non damées / Secured ungroomed pistes

FLAINE

- 1 Agate
- 1 Combe de Vêret
- 1 Combe de Gers

LES CARROZ

- 1 Corbalanche

SAMOËNS

- 1 DVA Park



ESPACE LUGE

Sledging area



SIXT

760m - Salvagny



RETOUR

PISTE DES CASCADES
Skibus gratuit toutes les 20 min
vers Samoëns télécabine GME
et Morillon village
jusqu'à la fermeture de la piste.

CASCADES PISTE RETURN

Free skibus every 20 min
to Samoëns GME gondola
and Morillon village until
the slopes are closed.

SAMOËNS

700m - Village



SAMOËNS

1600m - Les Saix



MORILLON

1100m - Les Esserts



MORILLON

700m - Village



LES CARROZ

1200m - Villars



ARACHES

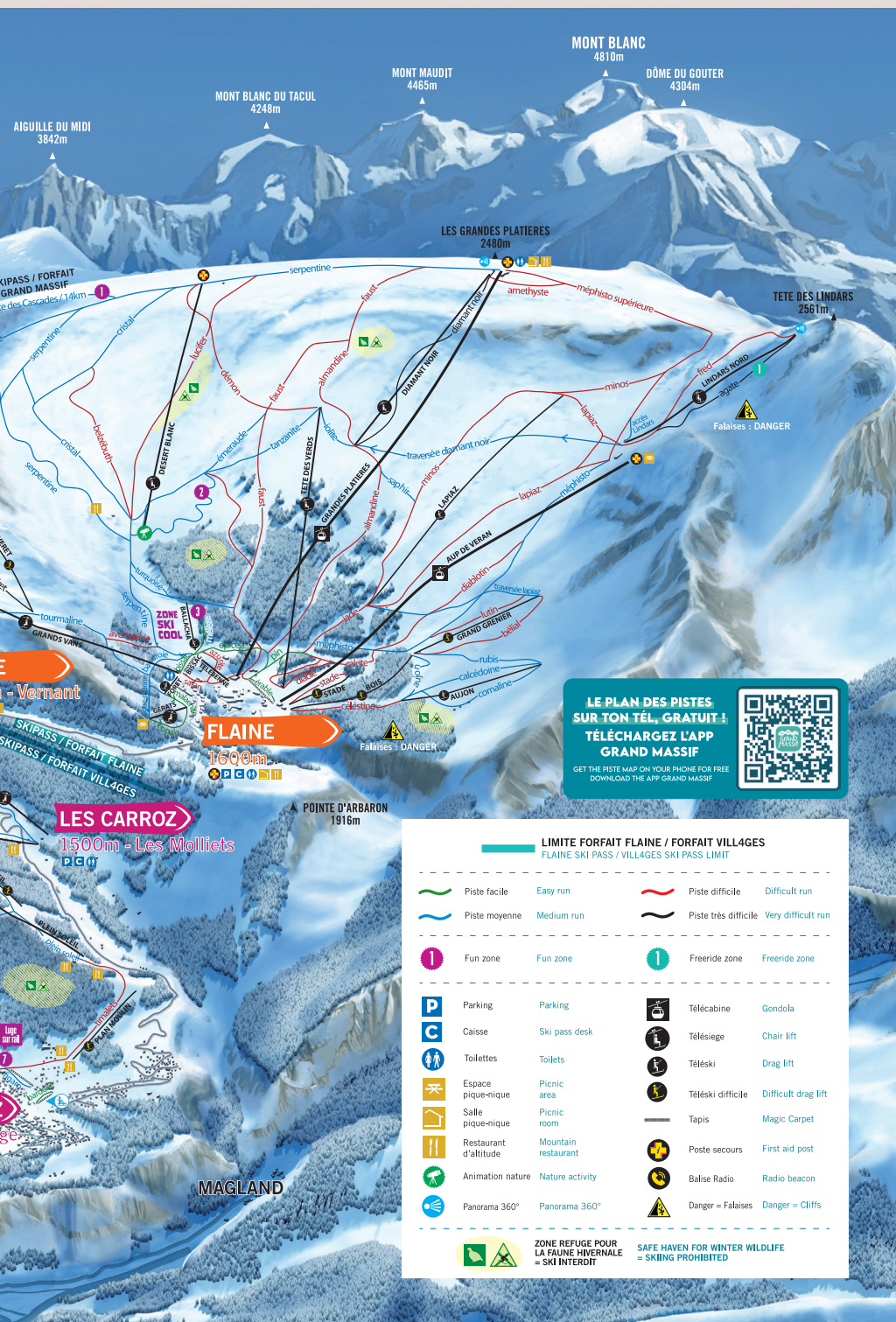
FLAINE

1740m



KALIBREE

© GRAND MASSIF DOMAINES SKIABLES



Grand Massif

Tel. +33 (0)4 50 90 4000
grand-massif.com

FLAINE SKI AREA

1600 M - 2500 M
24 lifts
64 marked runs

GRAND MASSIF SKI AREA

700 M - 2500 M
62 lifts
139 marked runs

**LE PLAN DES PISTES SUR TON TÉL. GRATUIT !
TÉLÉCHARGEZ L'APP GRAND MASSIF**

GET THE PISTE MAP ON YOUR PHONE FOR FREE
DOWNLOAD THE APP GRAND MASSIF

LIMITE FORFAIT FLAINE / FORFAIT VILLAGEES
FLAINE SKI PASS / VILLAGEES SKI PASS LIMIT

	Piste facile	Easy run		Piste difficile	Difficult run
	Piste moyenne	Medium run		Piste très difficile	Very difficult run
	Fun zone	Fun zone		Freeride zone	Freeride zone
	Parking	Parking		Télécabine	Gondola
	Caisse	Ski pass desk		Télesiege	Chair lift
	Toilettes	Toilets		Télésiège	Drag lift
	Espace pique-nique	Picnic area		Télésiège difficile	Difficult drag lift
	Salle pique-nique	Picnic room		Tapis	Magic Carpet
	Restaurant d'altitude	Mountain restaurant		Poste secours	First aid post
	Animation nature	Nature activity		Balise Radio	Radio beacon
	Panorama 360°	Panorama 360°		Danger = Falaises	Danger = Cliffs
ZONE REFUGE POUR LA FAUNE HIVERNALE = SKI INTERDIT		SAFE HAVEN FOR WINTER WILDLIFE = SKIING PROHIBITED			

Flaine

From 14th December 2024* to 21st April 2025

*From 14th to 20th December 2024, subject to weather and snow conditions.

Grand Massif

From 21st December 2024 to 13th April 2025

Find all information about the ski area, news, weather information, webcams and much more on www.grand-massif.com

Ski areas



Real-time ski area
information

Grand Massif and Flaine ski areas

With 5 resorts each boasting complementary qualities – Flaine with its urban style, family-friendly Les Carroz, traditional Morillon, Samoëns at the heart of nature and the hidden gem of Sixt-Fer-à-Cheval, as well as being the most diverse, **the Grand Massif is the 4th largest interconnected ski area in France.**



Flaine's ski area invites you to enjoy a vast selection of snowsports, including skiing, freeride and freestyle, following the mountains' natural contours!

Snowsports fans will love **the stunning views from the top of Les Grandes Platières with Mont Blanc** at the tip of their skis, as well as the huge variety of long, playful runs, renowned for always being well groomed. Whilst the majority of runs offer an abundance of easy wide curves, some can be quite steep with narrow sections that require a good level of fitness and technique.

What's more, you can access **Flaine's ski area from 4 different locations in the resort centre**, which means you can avoid the morning rush as you make your way to the slopes.

Flaine enjoys a unique geographical location at the heart of a natural cirque, **boasting fantastic snow cover right up until the end of the season.**



Webcams

Unmissables spots

MÉLÈZE

Accessed via the Ballacha ski lift, this green run is located in the heart of the beginner's area and is protected by Flaine Forest.

SERPENTINE

Offering 7 km of pure snowsports, the Serpentine blue run on Les Grandes Platières is caressed by long twists and turns, basking in the sun. Very popular with skiers of all levels, it offers breathtaking views across the whole of the resort of Flaine.

LES CASCADES

Or 14 kilometres of enchanting landscapes through the heart of a nature reserve... This blue run is perfect for family and friends, accessible to all and will leave you with incredible memories!

Round trip: 3h00 | Grand Massif skipass mandatory

FAUST

At Les Grandes Platières, the infamous Faust red run starts off at a fast pace, followed by two walls over a steady gradient that culminate in the heart of the resort.

LA COMBE DE GERS

Set off the beaten track, the Combe de Gers reveals its secrets only to those who follow the route that skirts around Tête Pelouse to reach this little corner of paradise. An amazing off-piste area awaits fans of freeride and steep slopes, with 800 metres of vertical drop, north-facing powder fields and south-facing slopes that offer exceptional spring snow! And to mix it up a little, head to the ungroomed but marked and safe "Lindars", "Diamant noir", and "Véret" runs.



Skipass 2024-25*

		ADULTS (15 to 74 yrs)	CHILDREN (8 to 14 yrs)
FLAINE	4 consecutive hours	€51.30	€41.00
	1-day	€57.00	€45.60
GRAND MASSIF	4 consecutive hours	€53.10	€42.50
	1-day	€59.00	€47.20

Free all season for children under 8 and seniors aged 75 and over (proof of ID required)

A LA CARTE SKIING

4-hour, day or 6-day pass, Flaine or Grand Massif, beginner pass... find your magic formula to enjoy the beautiful slopes of the ski area at your own pace.



*Prices excluding hands skicard (+€2/skipass). Non-refundable rechargeable support. Information given for reference purposes only.

Winter experiences



Fun zones

3 areas in Flaine where you can ride woops, rails and many other fun obstacles on the snow.

ZE FUN SLOPE

A real boardercross set on the Tourmaline run. A fun run consisting of moguls and banked turns, for maximum thrills individually or in a group.

Access: Grands Vans chairlift

URBAN'Z

A protected and accessible zone dedicated to kids and beginners. This learning area allows you to discover woops and banked turns in a gentle slope.

Access: Ballacha skilift

ZE FREESTYLE PARK

Fun space, consisted of several boxes, jumps and rails with a level ranging from XS to M.

Access: Tête des Verds chairlift



Ski touring

Ski touring is the ideal activity for all lovers of skiing and nature. Discover the most beautiful panoramas of Flaine and then descend to the resort, skiing on marked trails.

4 routes on Flaine ski area.



Skiing for all with "handisport"

Snowsports are accessible to everyone thanks to the large number of ski lifts, specially adapted equipment and professional instruction available.

• A 50% discount on the price of your skipass on presentation of a disability card of more than 80%.



On fine Nordic form

Wintersports holidays are synonymous with peace and serenity. Flaine is a rare beauty for you to discover. It transports you to a world of serenity among the pines. Make the most of your day or après-ski time by enjoying traditional mountain activities that nonetheless offer a complete change of scenery. At 1,844 metres (6 050 ft), the Col de Pierre Carrée is **the highest Nordic ski area in the French Alps to practice nordic sports**, with the most snow cover: nordic skiing – yoga – trail running – marked and maintained paths for snowshoeing and walking – dog sledding.

Access from the resort by free shuttles.

A paradise for beginners

This way, it's free!

Beginners are also well catered for here with **4 free ski lifts**, 3 magic carpets (Pré, Michalet and Bissac) and 1 bucket lift, as well as **2 beginners' areas**, including the Pré and Bissac safe zones.

Flaine welcomes you to discover its wide snowy boulevards that are suitable for all, beginners and experts alike. Did you know that **you can get all the way around the ski area using only blue runs**? Perfect for families!

Children's "ski" clubs

Aimed at teaching children to ski while enjoying themselves, the "Club Piou Piou" (ESF Flaine) is available for 3 to 12- year olds and the "Little One"(Grand Massif ESI) from 4 ½ years old.



In Flaine, there's just as much happening off the slopes and hikes!

The Tourist Office spoils little holidaymakers with a huge range of free entertainment!

There's a packed entertainments program throughout the winter and summer seasons, with a chance for children to enjoy a huge number of activities: magic and circus shows, concerts, balloon modelling, snowman-building contests, earning their toboggan driving licence, "fauna and flora" workshops, astronomy, performing arts, children's concerts and stories... Everything you need to make your holiday as extraordinary as possible!

Not forgetting unmissable encounters: a visit from Father Christmas, Carnival time, an Easter Egg hunt, as well as lighted drone shows and legendary torch-lit descents, Bastille Day and August 15th festivities!



All the program



The ESF's Team
is committed to making
your holidays in Flaine
a pure moment of
happiness

Savoyarde dinner followed
by a torchlight descent



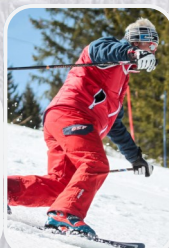
Half-day snowshoes
hiking



Looking to escape and
explore Flaine, let's do
it together



During all winter we propose to you our different group les-
sons ski, snowboard, freestyle and competition,
but also our customized courses



Come to see us !

ESF

Im. Aldébaran—Flaine Forum
Rés. P&V La forêt—Flaine Forêt
Rés. P&V Les terrasses d'Hélios—Flaine 1800
Tel: +33 (0) 450 908 100
Email: info@esf-flaine.fr



SKI SCHOOL & SNOWBOARD FLAINE

PRIVATE LESSONS
CHILDREN GROUPS
SNOWBOARD
OFF-PISTE



9 persons maximum
Test and medal free

www.esi-grandmassif.com

flaine@esi-grandmassif.com

+33 (0)450 90 84 41



Ecole de Ski Français

The ESF instructors at Flaine welcome you throughout the season to help you discover all forms of snow sports in a friendly group atmosphere or in individual lessons to help you progress at your own pace.

SKI, SNOWBOARD GROUP COURSES		
	ADULTS/YOUNG PEOPLE +13 YRS	SKI - CHILDREN 3 TO 12 YRS
6 half days	€249	€228*

*Medals included for 6 ½ day lessons for children's ski levels.

The ESF offers:

- Team Rider courses, from €215 per week.
- Half-day snowshoe outings, €28/pers (equipment provided).
- Half-day competition courses.
- Flèche and Chamois passes, open to all, €10/pers.
- Ski Privilège "6 children max" from beginner to Etoile de Bronze - 6 lessons at €206.
- Competition courses €220/per week.

Reservations recommended throughout the winter season.

Ecole du Ski Français de Flaine

Tel. +33 (0)4 50 90 81 00

info@esf-flaine.fr

www.esf-flaine.fr



ESI Grand Massif

The school has been based in Flaine since 1974, and its instructors all hold state qualifications.

Group lessons limited to 9 people to help everyone progress. Fun, modern teaching methods to delight holidaymakers.

GROUP CLASSES LIMITED TO 9 PEOPLE - SUNDAY TO FRIDAY		
SKI / SNOWBOARD	5 TO 12 YRS	€265
	13 TO 17 YRS	
	ADULTS	

• **Private lessons:** instructors specialising in skiing, snowboarding, telemark skiing, Nordic skiing and snowshoeing will cater for everyone's needs: beginners, touring, technique, freeride, freestyle, touring (on skis, snowboard or snowshoes).

• **Tapering prices:** from €65/hour.

• **Children's special:** adapted lessons in mother tongue (French, English, Dutch, German, Spanish, Italian and Russian).

• **Specialist:** Freeride and Freestyle courses.

• **Jardin des neiges Bissac "Les Tout Petits":** a safe, fun place to learn (garden with magic carpet). From 4,5 years old. Lessons include a snack break at the Bissac chalet restaurant. Booking recommended.

ESI Grand Massif

TEL. +33 (0)4 50 90 84 41

flaine@esi-grandmassif.com

www.esi-grandmassif.com

FLAINE MOUNTAIN - ECOLE SKI FLAINE**Ski instructors and mountain leader**

Ski-telemark-snowboard-splitboard-handi ski-ski touring-snowshoeing,
children ski lessons

Magasin Flaine Sport - Flaine Forêt · +33 (0)6 03 29 44 86

contact@ecole-ski-flaine.fr · www.ecole-ski-flaine.fr



www.skiflainemoniteurs.com **guy.pezet@wanadoo.fr**

**INDEPENDENT SKI INSTRUCTORS**

PRIVATE SKI LESSONS Adults or Children
all levels / piste or off piste

GUY +33607195609

LUC +33685413553

MARIE-CLAUDE +33681082697

**Catherine et Nicolas - Ski instructors**

Catherine, specialised in private
tuition for children from 2 years ½.

Nicolas, Individual lessons for
children and adults at all levels.

Tel: +33 (0)6 09 26 60 08

Tel: +33 (0)6 79 14 31 01

www.skicat74.com

**PASCAL CHENOT**

Tel. +33 (0)6 50 200 888

pascal.skiorganisation@yahoo.fr

STAGES FRANÇOIS SIMOND

Simond Sports - Flaine Forum

Tel. +33 (0)6 26 82 57 63

francois-simond@wanadoo.fr
www.stageskiflaine.com

DJÉ SNOWBOARD

Jérôme Granthil

Tel. +33 (0)6 64 23 58 98

ecolesnowboardflaine@gmail.com
www.ecolesnowboardflaine.com

FLAINE MASTER CLASS

Général Sport - Le Hameau de
Flaine

Tel. +33 (0)4 50 90 87 16
+33 (0)6 12 90 84 14

info@ski-rental-flaine.com
www.ski-rental-flaine.com

FLAINE SKI CLINIC

Lynne Stainbrook

Tel. +33 (0)6 68 66 76 17

lynnestainbrook@aol.com
www.flaineskiclinc.com

BROISIN LAURENT - HIGH MOUNTAIN GUIDE

Off-piste skiing, ski touring and
Vallée Blanche

Tel. +33 (0)6 60 08 81 79

broisinl@hotmail.com
www.flaine-parapente.com

Instructors and guides

Instructors

CATHERINE AND NICOLAS

I ski with CATHERINE! Qualified ski instructor specialised in private
tuition for children from 2 years ½. French and English speaking.

Nicolas, a professional ski teacher, both patient and encouraging with
a great experience. English and French speaking. Individual lessons
for children and adults at all levels.

Catherine Pouppeville: +33(0)6 09 26 60 08

Nicolas Pouppeville: +33(0)6 79 14 31 01

catherinepouppeville74@gmail.com

www.skicat74.com

PASCAL CHENOT

Pascal, ski/snowboard instructor and cameraman since 1985, brings
his expertise and experience during your stay in Flaine, gentle and
gradual approach tailored to your needs. All levels (children – adults),
private lessons (min. 2h), day or half-day.

Pascal Chenot

Tel. +33 (0)6 50 200 888

pascal.skiorganisation@yahoo.fr

FLAINE MOUNTAIN

Qualified ski instructors and mountain leaders, who live in Flaine
all year round. They share their experience and versatility in snow
sports teaching as well as for the exploration of unspoiled snow-
covered nature. Skiing - ski touring - off-piste - telemark - snowboard
- splitboard - snowshoeing - adaptive skiing - children ski.

Philippe Clerc: +33 (0)6 03 29 44 86

contact@ecole-ski-flaine.fr

www.ecole-ski-flaine.fr



STAGE FRANÇOIS SIMOND

François Simond, ex-member of the French alpine ski team and former World Cup competitor, offers:

- Ski clinics for children and teenagers
- Technical skiing, competition and off piste
- Training and preparation for the instructor qualification.

Simond Sport - Flaine Forum

Tel. +33 (0)4 50 90 80 97

+33 (0)6 26 82 57 63

francois-simond@wanadoo.fr

DJÉ SNOWBOARD / JÉRÔME GRANTHIL

Instructor, State qualified, specialized snowboard, offers collective courses for levels: beginner - intermediate - expert.
8 people max / group, from Sunday to Friday.

Tel. +33 (0)6 64 23 58 98

ecolesnowboardflaine@gmail.com

www.ecolesnowboardflaine.com

FLAINE SKI CLINIC

Lynne Stainbrook, an American ski instructor with 45+ years of international experience, provides private lessons to individuals or small groups of all levels. Lynne teaches proper technique through ski skills using a gentle psychological approach. French National Diploma (ENSA), BASI level 3 & Race Trainer, ISIA, PSIA, APSI.

Tel. +33 (0)6 68 66 76 17 *(during the season)*

lynnestainbrook@aol.com

www.flaineskiclinc.com

FLAINE MASTER CLASS

Flaine born and bred, state qualified ski instructors, Serge and Philippe Cornillat offer lessons for all levels (in French, English or Spanish); hourly, ½ day, full day – on piste and off-piste, freeride, ski touring, split boarding, snow kite, snowshoes.

Général Sport - Hameau de Flaine

Tel. +33 (0)4 50 90 87 16

info@ski-rental-flaine.com

www.ski-rental-flaine.com

MONITEURS INDÉPENDANTS FLAINE GRAND MASSIF

Marie-Claude, Luc and Guy, specialists in your private lessons - adults or children from 1 to 6 students max.

Come and discover the Flaine and Grand Massif ski areas with them, on marked itineraries or off-piste. You can also learn or improve your ski touring skills.

Guy: +33 (0)6 07 19 56 09

Luc: +33 (0)6 85 41 35 53

Marie-Claude: +33 (0)6 81 08 26 97

guy.pezet@wanadoo.fr

www.skiflainemoniteurs.com



High mountain guide

Laurent Broisin invites you to discover the off-piste in and around Flaine.

Off-piste skiing – ski touring – vallée Blanche.

Tel. +33 (0)6 60 08 81 79

broisinl@hotmail.com

Restaurant Le Michet

Un cadre unique
à Flaine !

*Service à table
Midi et soir*

*Restauration
traditionnelle*

*Spécialités
savoyardes*



Tél. +33 (0)4 50 90 80 08

2 chalets d'alpage
authentiques
flaine forum



L'Éloge

*Bar Restaurant
(service à table)*

Tél. +33 (0)4 50 90 85 91




Le Bissac
Flaine Forêt

ouvert 9h30 -17h

**Bar - Self service
et Restaurant**

(sur réservation conseillée)

croq'raquettes le jeudi soir

Tél. +33 (0)4 50 90 81 32

www.lebissac.com

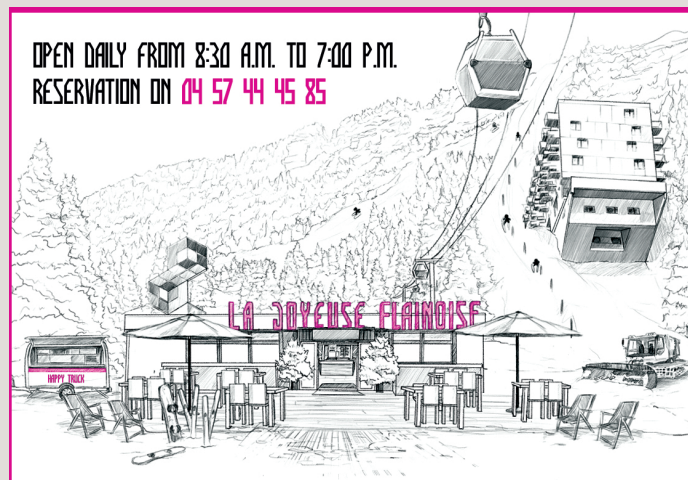


1 seule adresse : leschaletsdumichet@wanadoo.fr



BRASSERIE LES CIMES
FLAINE FORUM - 04 50 90 89 64
BRASSERIE - PIZZERIA - SPÉCIALITÉS SAVOYARDES - BAR - LOUNGE

Menus
Réservations




TOTEM
Hotel - Restaurant - Bar - Spa

Panoramic terrace at the foot of the slopes
Happy Hours on thursdays 5 to 7pm
DJ Set - BBQ - Animations
Lunch à la carte - Buffet dinner

Flaine Forum | +33 4 30 05 03 40
www.terminalneigetotem.com

On slopes

LE BISSAC ❄️

Tel. +33 (0)4 50 90 81 32

A chalet with a friendly atmosphere!

Bar - Self-service - Restaurant (non-stop snacking from 9am to 5pm).

Free pedestrian access via Télébenne and Bissac magic carpet

LES CHALETS DU MICHET ❄️

Tel. +33 (0)4 50 90 80 08

Refined, inventive cuisine in an authentic 100-year-old sheepfold.

Our cuisine is a skilful blend of local tradition, French gastronomy and an escapade into the heart of the world's flavors, with an emphasis on fresh, quality produce, local producers and therefore short circuits thanks to daily deliveries.

Pedestrian access.

LE DÉSERT BLANC ❄️

Tel. +33 (0)4 50 90 82 09

Brasserie/Snack bar & self-service restaurant.

Panoramic terraces at 2,500 m with breathtaking view of the Mont-Blanc massif!

You can eat on the go, sip a delicious hot chocolate, or simply take time to eat in the restaurant and choose a starter from the buffet and a traditional dish.

Pedestrian or ski access via the Grandes Platières cable car..

L'ÉLOGE ❄️

Tel. +33 (0)4 50 90 85 91

A cosy restaurant in a rustic setting.

The ideal place to enjoy an afternoon drink, with music, before returning to your accommodation.

Pedestrian access.

LAPIAZ ❄️ ❁

Tel. +33 (0)4 50 90 87 66

The menu is deliciously devised and created by the chef, who takes particular care every day to treat your taste buds to fine, hearty dishes in a bistronomic spirit.

For a snack, the snack area, directly accessible from outside in winter, offers homemade burgers, sweet and savoury paninis, wraps, sandwiches and soups.

LA PENTE À JULES ❄️

Tel. +33 (0)4 50 90 87 42

Open for lunch every day, the restaurant offers a mouth-watering menu. If you're in a hurry, take advantage of the "Jules Express" for a burger, bruschetta, wrap and all sorts of other delicacies.

REFUGE DE PLATÉ RESTAURANT ❁

Tel. +33 (0)6 63 62 42 90

Come and discover the Platé desert, one of the largest lapiaz in Europe. Romain and his team welcome you for a relaxing moment on the terrace. *Access by foot in summer, from the Grandes Platières cable car.*

Flaine Front de neige

LA JOYEUSE FLAINOISE ❄️

Tel. +33 (0)4 57 44 45 85

Generous, original and sincere cuisine using local, seasonal produce for lunch, and homemade pastries for afternoon snacks.

From the first ray of sunshine, you can enjoy the panoramic terrace.

Flaine Forum

1967 ❄️ ❁

Tel. +33 (0)4 50 90 87 40 / +33 (0)6 62 22 04 63

Open for lunch & dinner.

In the evening, come and discover **their char-grilled meats.**

All products are local and homemade.

BAR ROCKYPOP FLAINE ❄️

Tel. +33(0)4 80 16 12 21

Cocktail menu, beer and wine selection, savory and sweet treats... the bar caters to every post-ski craving. In a friendly, colorful atmosphere, enjoy the lounge area by the fireplace, or sit back and relax on the large bar stools!

Billiards - table soccer - karaoke - arcade games.

BLACK SIDE CAFÉ ❄️ ❁

Tel. +33 (0)4 50 90 83 06

With its warm atmosphere and carefully concocted **dishes combining tradition and originality**, Black Side Café will welcome you as if you were at home. Lunch starts at 12:00 with home-cooked food!

BUFFET ROCKYPOP FLAINE ❄️

Tel. +33(0)4 80 16 12 21

Foodtruck-style buffets. Enjoy a wide variety of authentic cuisine based on local produce, around large tables: cold starters, fishmongers, butchers, Italian specialties, cheesemongers, patisseries...

Reservations recommended.



ROCKY BUFFET
THE BEST Rocky RESTAURANT SINCE 2011

THE RESTAURANT OF ALL YOUR DESIRES

ENTREE
PLAT
DESSERT

PIZZERIA RESTAURANT

CHEZ PIERROT
Since 1979

RIDE EAT SLEEP... REPEAT
06 02 08 22 52



Le Grain de Sel

Open
Lunch, Dinner
7 / 7

Traditional restaurant
resto-legraindesel.fr

Flaine Forum
+33(0)4 50 18 74 43

SNOW FRONT BAR & RESTAURANT

ALHENA
HOTEL - RESIDENCE - SPA
+33 (0)4 85 58 24 45




ROCKY POP

THE BAR WITH THE MOST OFFBEAT ATMOSPHERE IN FLAINE

BOUYEZ ROCKY SAY CHEERS

RESTAURANT- BAR LE DESERT BLANC

Au sommet du DMC avec vue panoramique sur le Mont-Blanc

TEL:04.50.90.82.09 E-mail: ledesert.blanc@orange.fr

CAFE-RESTAURANT-BAR SABAUDIA

FLAINE FORET

+33(0)4.50.18.81.77

Immeuble Aldebaran
74300 Flaine
www.1967boireetmanger.com

1967

Tel: +33(0)4 50 90 87 40
Port: +33(0)6 62 22 04 63

LE LAPIAZ
Hôtel - Restaurant

All the Lapiaz's team is there to welcome you everyday, winter as summer.
Fresh, cooked and Savoyard food product.
A snowcat is available to have a easy access to the restaurant, in the evening time, in winter.
Warm setting with a fire place, sunny big terrace in the middle of the trees.
We suggest to booked a table for the restaurant at +33 4 50 90 87 66.
We are available for all questions.



SUSHI HOUSE
RESTAURANT 100% JAPANESE OF THE ROCKYPOP FLAINE

rockypop.com





BRASSERIE LES CIMES ❄️ ❁

Tel. +33 (0)4 50 90 89 64

In a typically mountain setting and friendly atmosphere, with a wood-panelled design inspired by Savoyard chalets, the Brasserie offers a menu featuring traditional dishes, pizzas, Savoyard specialities and a daily menu.

At the foot of the slopes, a south-facing terrace is the perfect place to relax and enjoy a moment with friends or family in an exceptional setting. In the afternoon, a fast-food service is available for those with a small appetite.

CHEZ DANIEL ❄️ ❁

Tel. +33 (0)4 50 90 81 87

Savoyard speciality restaurant with a warm, friendly atmosphere. A menu highlighted by fresh & local produce - direct from certain producers.

L'ÉPICERIE DE BALME ❄️

Tel. +33 (0)6 44 00 61 03

A gastronomic adventure!

We offer hot dishes, local produce and family recipes to eat in or take away, as well as fresh bread.

FRIENDLY KITCHEN ❄️

Tel. + 33 (0)4 30 05 03 44

Between two descents, stop for lunch on one of Flaine's most beautiful terraces, in Totem hotel. We offer a varied, well-balanced menu to satisfy both small and large appetites.

Every evening, discover a different selection of products on our starter and hot buffet, prepared before your very eyes for an original experience to suit everyone's tastes! End your culinary journey on a gourmet note with our homemade pastries.

FROMETON ❄️

Tel. +33 (0)4 80 16 12 21

Savour the best of Savoie at Frometon!

Frometon is one of 3 restaurants at the RockyPop Flaine Hotel & Spa, and is open for dinner only. To make the most of it, reserve your table in advance. On the menu: fondue, raclette, charcuterie and other delights... all in a warm and friendly atmosphere!

LE GRAIN DE SEL ❄️ ❁

Tel. +33 (0)4 50 18 74 43

Bar-Restaurant open all day.

In a friendly atmosphere, we offer breakfast, Savoyard specialities and traditional crêpes for snacks (quick service) all day long.

MONSTER BURGER ❄️ ❁

Tel. +33 (0)9 84 40 71 48

Burgers & salads

Monster Burger offers meals at attractive prices.

Delivery service only in winter.

O'SPOT ❄️ ❁

Tel. +33 (0)6 18 01 16 38

Your hosts, a Flaine's family, will be delighted to introduce you to **their local beers and platters, their homemade tapas and their world cuisine.**

PIZZERIA CHEZ PIERROT ❄️

Tel. +33 (0)6 02 08 22 52 / +33 (0)4 50 90 84 56

Discover the traditional and authentic cuisine of the Lillaz family. For over 40 years, this restaurant has been serving Brazerade and its cep gratin, Savoyard fondues, tartiflette, thin-crust pizzas and the famous blueberry tart. All dishes are home-made and cooked to order.

RESTAURANT LE BAUHAUS ❄️

Tel. +33 (0)4 85 58 24 45

Bar & restaurant

Inspiration Savoyarde - Selection of grilled meats and casseroles.

Local products.

SUSHI HOUSE ❄️

Tel. +33 (0)4 80 16 12 21

The RockyPop Flaine Hotel & Spa has thought of everything, even sushi in the mountains!

Makis, nigiris, sashimis, california rolls, soups...

Limited seating, reservation required.

Flaine Forêt

ALI-B ❄️ ❁

Tel. +33 (0)7 71 79 89 01

Café - Brunch - Cantine

A fast-food concept, on site or to take away, where we combine flavors and pleasures for recipes as fresh as delicious...

Coffee, sweet bars, bowls, wraps, conical buckwheat pancakes, soups: all homemade and good for your taste buds!

SABAUDIA ❄️ ❁

Tel. +33 (0)4 50 188 177

Café - Restaurant - Bar

Let yourself be welcomed by a pleasant, dynamic team. The menu offers a wide variety of dishes from different countries. Homemade, hearty meals, and lunch and dinner service.

Reservations recommended.



LA PENTE À JULES
restaurant



+33 4 50 90 87 42



THE RESTAURANT
only for
.CHEESE LOVERS.

Frometon
rockypop.com

RESTAURANT CHEZ DANIEL

FLAINE FORUM
SPÉCIALITÉS SAVOYARDES
04 50 90 81 87
CHEZ.DANIELFLAINE@WANADOO.FR



BEAU & BON

L'ÉPICERIE
de BALME
FLAINE

Aldebaran Forum



BAR • APERO • PLAISIR

Flaine Forum - Tel. +33(0)6 18 01 16 38

REFUGE DE PLATÉ
restaurant

Home-cooked meals in the heart of
a listed site.

Tel. +33(0)6 63 62 42 90
<https://refugeplate.fr/cam.fr/home.html>

Monster BURGER

OPEN EVERYDAY
11:30AM - 22PM

THE BEST BURGER
in town!

GALERIE MARCHANDE • FLAINE FORUM

BLACKside.

Food - Concept store - Clothes -
Ski rental

Flaine Forum
Tel. +33 (0)4 50 90 83 06
jm@blackside.fr

Ani-B

CAFÉ | BRUNCH | CANTINE

CONIC CREPE - WRAP - SALAD - SOUP
COFFEE - DRINK - GOURMET BAR - DRY FOOD

Eat in or take away ☎ 07 71 79 89 01



RECIPE

SAVOYARD POKE BOWL

Preparation: 10 min • Cooking: 20 min

Difficulty ★★

Ingredients

- 200 g plain crozets
- 150 g Beaufort
- 150 g Savoy ham
- 200 g tomatoes
- 100 g rocket
- 4 Savoy apples
- 75 g chopped hazelnuts
- Hazelnut oil
- Cider vinegar
- Salt and pepper

How to make it

- Cook the crozets for 20 minutes in a large volume of boiling water, adding salt at the end. Drain and leave to cool.
- Peel the apples and cut into slices, dice the Beaufort and tomatoes and cut the ham into thin strips.
- To prepare each poké bowl, divide the crozets between the slices and carefully place the various ingredients on top, finishing with the chopped hazelnuts.
- Dress with a hazelnut oil and cider vinegar vinaigrette and serve immediately.

SUPERMARCHÉ SPAR LES TERRASSES D'HÉLIOS

Open 7/7

Fruits and vegetables - Fresh product
Bread and pastries baked on site daily

Delicatessen, local produce.
Wine cellar - Champagne

Access: Residence Pierre & Vacances Hélios
La Placette (level-2)

Tel. +33 (0)4 50 58 00 38
spar-flaine@wanadoo.fr
www.spar.fr



Food shops

Flaine Forum

CHEZ BOLZI

Tel. +33 (0)4 50 58 00 38

Many regional products: cheeses, charcuterie, "pâtés", wines, beers, soups, etc.

Come and test our fondue or raclette formulas (with the possibility of loaning equipment).

SHERPA

Tel. +33 (0)4 50 90 86 09

Your mountain supermarket

Online order / Home delivery (see conditions in store) - "Raclette", "fondue", "pierrade" to take away with loan of appliances - Cold cuts and cheese by the cut - Tasting and sale of regional products - Wine, Beer & Champagne cellar - Catering - Meat - Rotisserie - Sandwich shop - Bread and pastries baked on site - Pastries - English products - Drugstore - Firewood - Sale of snow chains - Stamps

Flaine Forêt

BAKERIE AUX SAVEURS DE FLAINE

Tel. +33 (0)4 50 93 18 44

Artisan - Baker - Pastry cook

Snack area, sandwiches and breakfast - Delivery date possible.

DOUCE FRANCE

Tel. +33 (0)4 50 90 85 67

Products from our mountains such as farmhouse cheeses, sausages, hams, charcuterie by the slice.

Alcohols, honeys and jams selected from our best local artisans and producers.

Flaine Les Gérats

SPAR HÉLIOS

Tel. +33 (0)4 50 58 00 38

A wide range of products and services: fruits and vegetables, fresh produce, bread and pastries baked on site every day, delicatessen, local produce, wine & champagne cellar, caterer, sale of snow chains, sale of firewood and ecological logs.



mon super marché
sherpa

Local products
Loan of fondue and raclette appliances
Bread / Croissants / Pastries
Press
Sandwiches / snacking

SHERPA FLAINE
Le forum
04 50 90 86 09
Open 7/7, 7.30 am to 8 pm

www.sherpa.net sherpa.supermarche sherpa.supermarche

Pour votre santé, mangez au moins 5 fruits et légumes par jour | www.mangerbouger.fr

DOUCE FRANCE

Delicatessen, BIO & regional products

Delicatessen & cheese
Regional fine wines and from France
Raclette, fondues to take away with loan of material.

OPEN 7/7 IN SEASON

Galerie marchande - Flaine Forêt
Tel. +33 (0)4 50 90 85 67




Aux Saveurs de Flaine

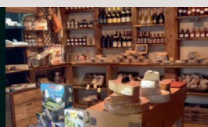
Boulangerie Pâtisserie
Maison
Cartier
ARTISAN
de père en fils depuis 1970

04 50 93 18 44
Galerie Marchande Flaine Forêt

Craftsman
Bakerie
Pastry

CHEZ BOLZI
Epicerie fine
Produits régionaux

04 50 58 00 38
06 87 25 64 85
FLAINE FORUM - 74300 Flaine



SUMMER IN FLAINE IS FREE! *

with
FLAINE SUMMER PASS



ARCHERY

PEDAL GO-KART

ACCRO-ROC
MOUNTAIN TRAIL

MINIATURE
GOLF COURSE

BOUNCY CASTLES
TOURNAMENTS

ZUMBA

CRAZY PONG

FOOT DART

PETANQUE

ACCRO-FUN

LASER RIFLE SHOOTING
ELASTO-BUNGEE

CHILDREN'S PLAYGROUND

BUMPER BALL

ART CENTRE
TENNIS

CROSS TRAINING

YOGA FOR ADULTS & KIDS

LIBRARY

BIG AIR BAG

GIANT GAMES OF CHESS OR CHECKERS

ACCRO-KIDS

TRAMPOLINES

SLIP'N SLIDE FOR TODDLERS

TABLE TENNIS

ENTERTAINMENT

SLIP'N SLIDE

GAMING KAPLA

PUMPTRACK

CARDIO FIGHTING

TABLE TENNIS



QR code GB



Access to over 35 free activities and entertainments* with a simple wristband!

Thanks to free equipment loans (deposit required), there's no need to cram your suitcases full! You'll find all the accessories you need to enjoy all the activities included in the Flaine Summer Pass.

TIPS

The Flaine Summer Pass is the cherry on top, providing access to special offers, discounts and even free gifts from shopkeepers and participating service providers!

Go to flaine.com

Tourist Office | Tel. +33 (0)4 50 90 80 01
welcome@flaine.com

*Subject to change *Offer combined with a stay at a participating accommodation partner.
Listing on flaine.com



Walking, mountain biking and trail routes

Suddenly discover Mont Blanc right in front of you, observe the local flora and fauna, learn about geology or test your time?

Walk, ride, run! Starting out from Flaine, there's always something to change your view of the mountains, whether you're in contemplative or sporting mode. To make these discoveries easier, take advantage of the facilities offered by the resort: cable car, organised outings, entertainment...

Whether you're a beginner or an expert, our Haute-Savoie resort offers **a wide range of walking, mountain biking and trail routes.**

On the edge of the Sixt-Fer-à-Cheval and Passy nature reserves, Flaine offers treasures of flora and fauna: ibex, marmots, jackdaws, bluebells, wild rhododendrons, genepi... and discover majestic and varied landscapes, diverse hikes, from family strolls to long outings and unexpected encounters...

On foot or on mountain bike, tackle 200 km of prepared routes of Flaine, **alone or a guided themed outing.**



Tips

- **Free shuttle buses** run between Les Carroz and Flaine. Each bus stop has one or more ideas for outings.
- **Electrically assisted mountain bike (EAB) charging** at the Sherpa food shop.



Free app
"Flaine Les Carroz 2ccam
Espace Outdoor"





Platé Desert

Leaving from Flaine, the cable car will take you at **2,500 metres at the top of Grandes Platières, 7/7.**

An unforgettable surprise awaits you at the summit: **the Mont-Blanc, Aravis, Belledonne or Jura mountains range...**

Just a few steps further and you're in the **Platé Desert, a listed protected natural site, it is the largest 'Lapiaz' formation in Europe**, spreading over several kilometres.

A vast limestone plateau formed by glaciers and sculpted by meltwater, hikers who venture out here will feel as if they're walking on a stone glacier or even the moon!

Encircled by imposing walls, the Platé Desert is a secret garden that will delight nature lovers with its rich plant life, abundant wildlife and spectacular geology. See the fossilised remains of a mountain that was once a seabed 40 million years ago! Encounter ibexes along the way.

It is the starting point for a number of pedestrian hikes and mountain bike routes, and, the boldest amongst you, can access the site by the GR 96 (approx. 3hrs walk).

PLOMBERIE MICHAEL BOULANT

Plumbing, heating, ventilation, spa, sauna, steam bath.
Installation, troubleshooting, maintenance, new and renovation

Les Carroz • Tel. +33 (0)6 29 84 24 20
michael.boulant@sfr.fr

**PROPERTY SERVICES**


- Concierge Company based on place: your referral to manage your property (key handover, inventory etc ...)
- Bed linen, baby kit
- Laundry & Laundromat
- Renovation

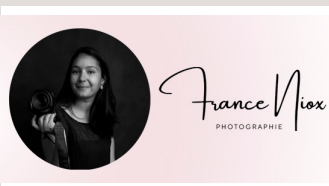
Tel. +33 (0)4 50 90 44 73 • www.property-services-flaine.com



Leave your skis at the bottom of the slope

Patrick's Ski Locker

 Ski boot dryer-Heater
Ski maintenance
le Panoramic - Flaine Forêt
00 (33) 450 969 318 patskilockers@gmail.com



Shops & services

Boutique

L'ALPAGE

Souvenir gift store

Take home a unique souvenir of your Flaine vacation: gifts, liqueurs, decorations...

Flaine Forum shopping center - Tel. +33 (0)4 50 96 36 92

Services

MAKE YOUR VACATIONS EASIER!

- Welcome your tenants on site.
- Accompaniment, inventory of fixtures, cleanliness checks and any other services you may require.
- Linen rental (sheets, towels, etc.).
- Rental of baby kit, strollers, laundry, laundromat...
- Cleaning kit.
- End-of-stay cleaning.

Property Services - Flaine Forum

Tel. +33(0)4 50 90 44 73 - www.property-services-flaine.com

SKI LOCKERS

Why carry your skis all the way back to your accommodation?

Book your ski locker at the foot of the slopes and the Grands Vans chairlift. Several options are available, including equipment servicing. Open daily all winter from 8.45am to 5.30pm.

Patrick's Ski Lockers - Le Panoramic residence - Flaine Forêt

Tel. +33 (0)6 32 83 82 00 - patskilockers@gmail.com

FRANCE NIOX PHOTOGRAPHY

Professional photographer specializing in family, children and maternity portraits.

Whether in my home studio or outdoors, I capture your special moments. From joyful family laughter to radiant expectant mothers, I'm here to preserve your cherished memories and bring a smile to your face!

Tel. +33 (0)7 82 49 17 06 - franceniox@gmail.com - www.france-niox.com

PLUMBING/HEATING - MICHAEL BOULANT

- Plumbing repairs.
 - Heating work (wood, oil, gas, electric boilers, heat pumps).
 - Sanitary work (bathroom renovation and creation) and VMC.
 - Spa, sauna and hammam installation and maintenance.
- RGE-qualified craftsman.

Tel. +33 (0)6 29 84 24 20 - michael.boulant@sfr.fr



Health

MEDICAL CENTER

Winter season: Monday to Saturday from 9am to noon and from 2pm to 7pm / Sunday & bank holiday from 10am to noon and from 2pm to 6pm.

Summer season: Monday to Friday, from 10am to noon.

Flaine Forum

Tel. +33 (0)4 50 90 81 42

PHARMACY

Winter season: daily from 9am to 12:30pm and from 1.30pm to 7pm.

Summer season: daily from 9am to 12:30pm and from 4pm to 7pm.

Flaine Forum shopping center

Tel. +33 (0)4 50 90 82 02

RESCUE CENTER

Departure from Grandes Platières cable car.

Tel. +33 (0)4 50 90 80 58

Flaine informations

FLAINE TOURIST OFFICE

Winter season: daily from 8:45am to 7:00pm.

Summer season: daily from 9:00am to 12:30pm and from 2:30pm to 7:00pm.

Out season: Monday to Friday from 9:00am to noon and from 1:00pm to 5:00pm.

Flaine Forum

Tel. +33 (0)4 50 90 80 01

welcome@flaine.com

flaine.com

FLAINE MARKET ❄️

Every Monday from 4pm to 7pm at Flaine Forêt.

POST OFFICE ❄️

Winter season: open Monday, Tuesday, Wednesday, Friday from 8.30am to 11.30am.

Summer season: from Monday to Friday from 9.00am to noon.

Flaine Forum - Shopping center 1st floor

Tel. +33 (0)4 50 90 85 48

NURSERIES AND MINI-CLUBS ❄️

Set off on the slopes or on the hikes with peace of mind when you entrust your little ones from the ages of 6 months.



ATM

7/7

7.00 am to 10.00pm

Flaine Forum - Shopping center 1st floor

LAUNDROMAT ❄️

Monday to Saturday 9am to 8pm - Sunday 10am to 8pm.

Flaine Forum - Shopping center 1st floor opposite UCPA les Lindars

Internet

▪ Rent your pocket WiFi and stay connected everywhere!

Flaine Tourism Office, in partnership with Hippocketwifi, allows you to stay connected anywhere (slopes, room, restaurants/bars...) during your trip in Flaine.

- Avoid very expensive roaming fees during your trip in France.
- Unlimited internet access
- High-speed 4G network
- Easy to use
- Private and secure network
- Connect up to 10 devices simultaneously

Informations: welcome@flaine.com

Book it: <https://hippocketwifi.com/fr/reservez-pocket-wifi-flaine/>

▪ 2 high-speed internet connections (charges apply):

- via the Tourist Office Wi-Fi network (free the morning only)
- via the whole resort's Neptune network.

▪ **Different bars, restaurants, shops and accommodations** suppliers throughout the resort offer this service, as well as Internet terminals, to guests.

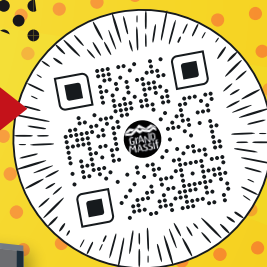


**GRAND MASSIF DOMAINES SKIABLES IS COMMITED
TO ZERO WASTE ON THE SLOPES**



**YOU'RE STRONG
ENOUGH TO
TAKE YOUR
RUBBISH WITH YOU,
THE BINS ARE NOT
THAT FAR AWAY**

**MAP OF
BIN LOCATIONS**



WE'RE COUNTING ON YOU, THANKS TO OUR SUPER HÉROS !

A ZERO WASTE SKI AREA

MORE DETAILS AT GRAND-MASSIF.COM

Environment

Car-free resort, transport by shuttles, links by lifts...
A pioneer in terms of sustainable development,
Flaine continues to launch innovative measures.

Yesterday, a pioneer in terms of sustainable development

The first mountain resort to be equipped with **main gas**, the first to **bury its electric cables**, to get **cable TV**, to install **artificial snowmaking equipment**...Flaine was at the cutting edge right from the word go. As far as **getting around this car-free** resort is concerned, everything can be easily reached **on foot, on skis, by shuttlebus** or thanks to **2 inclined lifts**. A pioneer in terms of sustainable development, Flaine continues to launch innovative measures 50 years on.

Today focused on ecology

L'OBSERVATOIRE ENVIRONNEMENTAL

In 2007, Flaine ski area decided to establish an **environmental observatory, which is now being extended throughout the Grand Massif**. With an aim to protect and respect the exceptional natural heritage, it covers 4,219 hectares over 5 different municipalities. Its goal is to carry out exhaustive research and counts on biodiversity in all its forms: landscape, flora and fauna. This snapshot of the local biodiversity makes it possible to track growth in a factual way, to find solutions to preserve the natural environment or restore it to its original state, and to preserve zones noted as problematic by the observatory. It places great importance on its desire to be exemplary in the way actions are implemented with regards the authorities and the regulations that are in place, taking a groundbreaking approach to its projects. The work carried out comprises three areas: observations, understandings and actions.

Tomorrow target 2030

Grand Massif Domaines Skiabes is implementing a trajectory to limit its pressure on the environment by 2030.

For each goal, the implementation of concrete actions is planned. For residual impacts, compensation measures are adopted.

- **ZERO NET CARBONE:** One more step towards 0 carbon thanks to HVO fuel / Reforestation of the territory's forests..
- **POSITIVE BIODIVERSITY:** A management plan for natural spaces in Flaine / Revegetation of work areas / Restoration of wetlands / Protection of wintering areas for Black Grouse and Ptarmigan.
- **ZERO LOST WASTE:** Target "0 trash on the ski area" / Recycling of ski lift tires.



NATURE WATCH SERVICE ❄️

A wealth of discreet mountain animals live alongside Flaine's visitors, and you can set out to discover them thanks to the **nature watch service** run, in winter and in summer. Embark on a unique experience in the company of a mountain leader, and armed with a pair of binoculars, get to know our mountain animals, find out more about their amazing versatility and learn how we can help to protect them. **Free activity.**





A HOLIDAY WHERE FIR TREES, A SPA
AND STUNNING VALLEY VIEWS TAKE
CENTRE STAGE

FLAINE MONTSOLEIL
Les Terrasses d'Eos *****

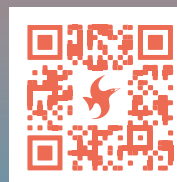
5-star residence with Green Key
accreditation.
Apartments for 4 to 10 people.
Free access to heated outdoor pool, sauna,
hammam and fitness studio.
Services and shops available near
the residence.

reception.flaine-eos@groupepvc.com
www.pierreetvacances.com
+33 (0)4 50 91 44 00



Online booking on flaine.com

For peace of mind and the best price
when booking your holiday:
accommodation,
ski lesson, equipment...



FLAINE
Les Terrasses d'Hélios *****

High standing tourism residence
combining modern decoration
and absolute comfort hotel services
Spacious and welcoming apartments
Ski-in/ski-out
SPA, sauna, hammam and Jacuzzi
Indoor swimming pool
Day care center
Shops nearby

reception.flaine-helios@groupepvc.com
www.pierreetvacances.com
+33 (0)4 50 91 44 30



FLATS UP TO 10 PERSONS



ROCKY
POP

rockypop.com



TOURIST RESIDENCE



PIERRE ET VACANCES PREMIUM LES TERRASSES D'EOS*****

Flaine Les G r ts
Tel. +33 (0)4 50 91 44 00

reception.flaine-eos@groupepvc.com
www.pierreetvacances.com

Located on the heights of Flaine, with a breathtaking view of Grand Massif area, this Premium residence is ski in/ski out. It is equipped with a wellness area with heated outdoor pool, indoor jacuzzi, sauna, steam room and fitness room.

ONLINE BOOKING



TOURIST RESIDENCE



PIERRE ET VACANCES PREMIUM LES TERRASSES D'HELIOS*****

Flaine Les G r ts
Tel. +33 (0)4 50 91 44 30

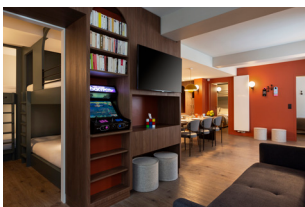
reception.flaine-helios@groupepvc.com
www.pierreetvacances.com

Located on the heights of Flaine, with a breathtaking view of Grand Massif area, this Premium residence is ski in/ski out. It is equipped with a wellness area with heated outdoor pool, indoor jacuzzi, sauna, steam room and fitness room.

ONLINE BOOKING



TOURIST RESIDENCE



ROCKYPOP FLAINE APPARTEMENTS & SPA ****

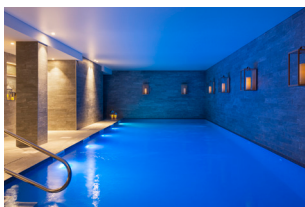
B timent Aujon - Flaine Forum
Tel. +33(0)4 80 16 12 21

flaine@rockypop.com
www.rockypop.com

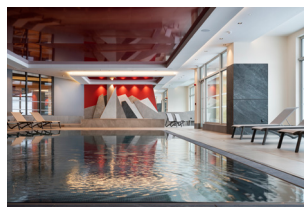
RockyPop is the new hot spot of Flaine! The joy of togetherness could be the motto of RockyPop, where is all about entertainment and the experience of living together in a fun and relaxed atmosphere. Discover the full range of practical and original services: a huge cocktail bar with games and karaoke rooms, diversified food options, 5 meeting rooms, a grocery store, a Spa by Nuxe with indoor swimming pool...

To sleep, studios and apartments up to 10 people!

ONLINE BOOKING



TOURIST RESIDENCE

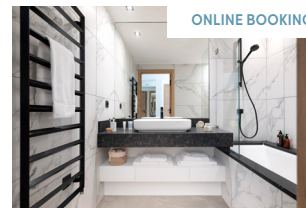


ALH NA RESIDENCE & SPA

Flaine Front de Neige alhena@mgm-groupe.com Tel. +33 (0)4 85 58 24 45
www.mgm-hotels-residences.com/en/apartments-flaine-alhena

Alh na residence offers an exceptional location: ski-in/ski-out and south-facing. The residence comprises a hotel, a tourist residence and a restaurant. The flats (3 to 4 rooms) have large windows and balconies overlooking the surrounding countryside. Each flat has its own ski locker with boot dryer, private cellar and covered car park. Heated indoor swimming pool, children's pool, sauna, hammam, whirlpool, Nordic bath, sensory shower, fitness room with Technogym  equipment, Montagne du Monde  Spa treatment area with single and double cabins.

ONLINE BOOKING





À CHAQUE ENVIE SES VACANCES



Located on the heights of Flaine, on the slopes, 100m from the shops and entertainment, the residence offers spacious and comfortable apartments from 2-bedrooms for 4 people in 3-bedrooms for 6 people. Possibility of short stay.

reception.flaine-foret@groupepvcp.com
www.pierreetvacances.com
+33 (0)4 50 90 87 99



RESIDENCE LE PANORAMIC FLAINE

INDOOR HEATED POOL | SAUNA | HAMMAM
APARTMENTS 4 TO 8 PEOPLE EQUIPPED
WEEKLY RENTAL | WEEK-END | SHORT STAYS

Odalys
VACANCES

+ 33 4 50 89 19 20

accueil.panoramic@odalys-vacances.com
odalys-vacances.com

RCS Paris 511 929 739 - Photo : Xavier

Madame Vacances Since 1991

RÉSIDENCE LES TERRASSES DE VERET****

Health & Fitness suite with
indoor swimming pool and spa

Direct access to the slopes
and close to the resort centre

Indoor parking and ski lockers available

+33 (0)4 79 65 08 41
www.madamevacances.com

RESTAURANT WITH THE BEST VIEW IN FLAINE

TO MAKE A RESERVATION CALL:

0450 531 862

DORMIO RESORT
LES PORTES DU
GRAND MASSIF
FLAINE

Le Refuge

DORMIORESORTFLAINE.FR

DORMIO
RESORTS & HOTELS

TOURIST RESIDENCE ❄️❄️



ONLINE BOOKING



DORMIO RESORT LES PORTES DU GRAND MASSIF****

Flaine Les Gérats
Tel. +33 (0)4 50 53 18 62
www.dormio.fr/vacances/resorts/les-portes-du-grand-massif-flaine

Booking: + 33 (0)7 88 33 04 17
reservations@dormio.fr

At 1850 meters high you will find the spacious and luxurious apartments and chalets, for 4 to 12 persons, with a spectacular view over Flaine. For most of the season, you can use the ski slope near the residence to get to the first chairlift. In the summer you can play golf on the adjacent golf course with a breath-taking panoramic view and enjoy a lot of outdoor activities. After an active day, it's time to relax in the wellness area. In our renewed restaurant, with its warm ambiance, you can enjoy culinary delights while having the most spectacular view of Flaine.

TOURIST RESIDENCE ❄️❄️



ONLINE BOOKING



RESIDENCE ODALYS LE PANORAMIC***

Flaine Forêt
Tel. +33 (0)4 50 89 19 20
www.odalys-vacances.com/location-montagne/haute-savoie/flaine/

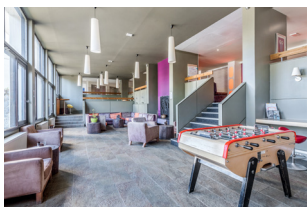
Booking: +33 (0)8 25 56 25 62 (0.18 €/min)
adv@odalys-vacances.com

The residence, "ski in-ski out", offers fully equipped apartments, accommodating up to 8 people. By booking with Odalys, you can access discounts on ski passes, ski equipment and ski lessons. Indoor heated swimming pool, sauna and hammam. In summer: 2 free hikes with professional and free activities with Flaine Summer Pass.

TOURIST RESIDENCE ❄️❄️



ONLINE BOOKING



PIERRE ET VACANCES RESIDENCE LA FORÊT***

Flaine Forêt
Tel. +33 (0)4 50 90 87 99

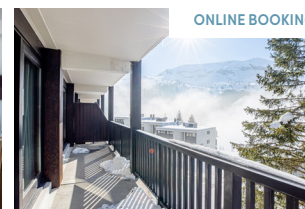
reception.flaine-foret@groupepvcvp.com
www.pierreetvacances.com

Located on the heights of Flaine, on the slopes, 100m from shops and entertainment, the residence offers spacious and comfortable apartments from 2-rooms for 4 people to 3-rooms for 6 people. Possibility of short stays.

TOURIST RESIDENCE ❄️❄️



ONLINE BOOKING

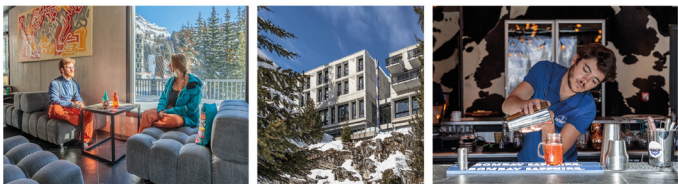


MADAME VACANCES - LES TERRASSES DE VERET***

Flaine Forêt
Tel. +33 (0)4 79 36 36 51
Tel. reservation : +33 (0)4 79 65 08 41

clients@madamevacances.com
www.madamevacances.com

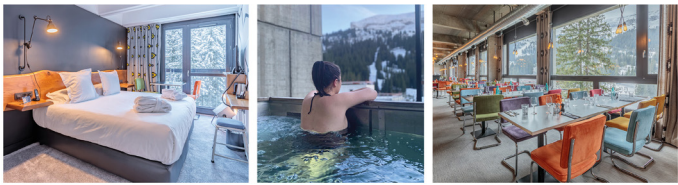
The residence welcomes you in spacious, comfort and modern apartments, with a fully equipped kitchen and a terrace or a balcony opening onto the resort. After a day on the slopes or hiking, you will have to walk only a few steps to come back to Les Terrasses de Vêret residence and take advantage of the swimming pool. Comfortably settled in the exterior jacuzzi, all you will have to do is marvel at the panoramic view surrounding mountains.




T O T E M
Friendly Hotel Flaine

Hôtel, Restaurant & Spa
Eat. Ski. Sleep. Repeat!

Totem, Friendly Hotel
Flaine Forum | +33 (0)4 30 05 03 40





ROCKY POP

RESTAURANTS
BAR
SHOP
SKISHOP
KARAOKE

GOOD VIBES ONLY

ROOMS
APARTMENTS
PENTHOUSES
SPA NUXE
KIDS FRIENDLY

rockypop.com



CREATOR
OF MOUNTAIN HOLIDAYS
DECLARE YOUR DESIRES!

ALHÉNA HOTEL & SPA - FLAINE

BOOK ON
MGM-HOTELS-RESIDENCES.COM



CREATOR
OF MOUNTAIN HOLIDAYS
TASTE THE COMFORT!

ALHÉNA RESIDENCE & SPA - FLAINE

BOOK ON
MGM-HOTELS-RESIDENCES.COM



HOTEL ❄️🌸



ONLINE BOOKING



ALHÉNA HOTEL & SPA

Flaine Front de neige

Tel. +33 (0)4 85 58 24 45

www.mgm-hotels-residences.com/en/apartments-flaine-hotel-alhena

alhena@mgm-groupe.com

The Alhena hotel reinvents a true art of mountain living, putting guests at the heart of everything it does. For your comfort, the hotel offers double and family rooms. Heated indoor pool, children's pool, sauna, hammam, whirlpool, Nordic bath, sensory shower, fitness room with Technogym® equipment, Spa Montagne du Monde® treatment area with single and double cabins.

HOTEL ❄️



ONLINE BOOKING



TOTEM FRIENDLY HOTEL***

Flaine Forum

Tel. +33 (0)4 30 05 03 40

Tel. booking: +33 (0)4 30 05 03 59

reservation@tn-totem.com

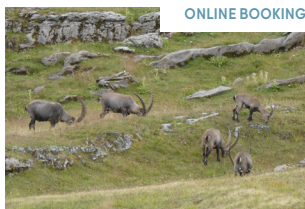
www.terminalneigetotem.com

The mix of natural materials, the concrete character of the building alongside the chestnut oak furniture are all made to measure. All of this helps to create an intimate and artistic atmosphere that you can discover in all 96 rooms. Bar/restaurant: buffet or "à la carte". Ski shop. Ski in /ski out. Totem Spa: 3 treatments rooms with one for Duo. Wellness area: fitness room, saunas, relaxation room, outdoor terrace with a whirlpool bath. Ski in, ski out.

REFUGE ❄️🌸



ONLINE BOOKING



REFUGE DE PLATÉ

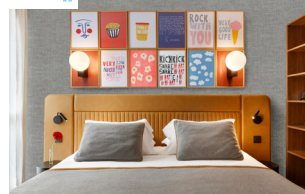
Tel. +33 (0)6 63 62 42 90

https://refugedeplate.ffcarn.fr/

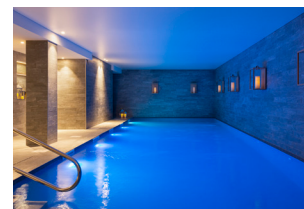
refugedeplate74@gmail.com

In summer, isolated in the heart of a wild plateau, the Refuge de Platé welcomes you for an extraordinary evening. Come and enjoy a colorful meal before a night in a rustic dormitory. Fondue, croziflette, berthoud... the warden is on hand to arrange a meal to suit your tastes. The next day, after a good breakfast, you can hike to Flaine and the Grandes Platières. Platé is a typical mountain refuge with spartan comforts: no showers, no running water. The dry toilets are at the bottom of the garden. In winter, the unguarded refuge is accessible by ski touring. It's the ideal place to switch off, refocus on the essentials, enjoy the wilderness and create unforgettable memories.

HOTEL ❄️



ONLINE BOOKING



ROCKYPOP FLAINE HOTEL & SPA****

Flaine Forum

Tel. +33 (0)4 80 16 12 21

flaine@rockypop.com

www.rockypop.com

RockyPop is the new hot spot of Flaine! The joy of togetherness could be the motto of RockyPop, where is all about entertainment and the experience of living together in a fun and relaxed atmosphere. Discover the full range of practical and original services: a huge cocktail bar with games and karaoke rooms, diversified food options, 5 meeting rooms, a grocery store, a Spa by Nuxe with indoor swimming pool... To sleep, 118 rooms & apartments for 1 to 10 people!

UCPA LES LINDARS

The UCPA centre 'Les LINDARS' offers:

- Ski and snowboard courses (all level) for adults (aged 18 to 40);
- 7 nights all-inclusive package: accommodation in rooms sleeping 2 or 4 pers., full board, ski pass, equipment, supervision and entertainment;
- From 2-day to 4-day breaks also available some dates.
- Center dedicated to families during school holidays.



Centre UCPA Les LINDARS
Tel. +33 (0)4 50 47 65 75
flaine-lindars@ucpa.asso.fr
Reservation: www.ucpa-vacances.com

UCPa

UCPA ALTAIR

- Ski and snowboard courses (all level) for juniors (aged 11 to 17)
- 7 nights all-inclusive package: accommodation in rooms sleeping 4, full board, ski pass, equipment, supervision and entertainment;
- Weekends and 2-3-day breaks also available some dates for adultes group.

Centre UCPA ALTAIR - Tel. +33 (0)4 50 90 82 64
flaine-altair@ucpa.asso.fr
Reservation: www.ucpa-vacances.com

UCPa

REFUGE DE PLATÉ

Need a change of scenery?
 To spend a night out of time
 in a mountain refuge?

Tel. +33(0)6 63 62 42 90
<https://refugedeplate.ffcam.fr/home.html>

Private lettings

Book your holiday directly
 with a private individual from
 a wide choice of approved
 furnished accommodation.



Village Club MMV *** Le Flaine

Recently refurbished, the mmv MMV Village Club Le Flaine, rated 3 stars Holiday Village, welcomes you in the heart of the resort. Enjoy its lounge with the listed fireplace and the suspended terrace with a breath-taking view. Energize yourself with a unique mountain activities program. While children are in the Kids Club, get off the ski slopes non-stop or relax in the wellness area. Then enjoy your meal at the restaurant before an early evening entertainment with shows and happenings.

- Hotel services
- Full Board
- Daytime and evening entertainment
- Kids & Teens Club from 18 months to 17 years
- Children are walked to their ski lessons by MMV staff
- Wellness area : jacuzzi, sauna, hammam
- free outdoor activities

INFORMATIONS ET RÉSERVATIONS :
mmv.fr OU **+33 (0)4 92 12 62 12**



Belambra
clubs

New "PANORAMA"
5B club in Flaine

*Enjoy an All-Inclusive experience
at the foot of the slopes*

Restaurant • Children's clubs • Entertainment • Wellness area

Belambra.com - +33 (0)1 46 10 13 14

CLUB-HOTEL



ONLINE BOOKING



CLUB HOTEL MMV LE FLAINE***

Flaine Forum
Tel. +33 (0)4 50 90 47 36

Tel. réservation : +33 (0)4 92 12 62 12
courrier@mmv.fr / www.mmv.fr

Set in an ideal location, just 100 metres from the top of the ski lifts, this 3-star club hotel has been recently renovated.

Many different services are available for unique family Club experiences. Run by trained activity organisers, the Kids' clubs offer fun mountain-themed activities and entertainment. The MMV apres-ski, buffets and themed dinners will delight gourmards; and last but not least, there's the Spa for some relaxation.

HOLIDAYS CENTRE



ONLINE BOOKING



UCPA SPORT VACANCES - CENTRE FLAINE ALTAIR

Front de neige
Tel. +33 (0)4 50 90 82 64

Reservation: +33 (0)9 69 390 392
flaine-altair@ucpa.asso.fr
www.ucpa.com

This center offers 210 places on 3 floors away from collective areas. The rooms have been "re-designed" in the style of wooden boat cabins, and re-arranged with a sink area. They accommodate 4 or 5 people. Showers and toilets are upstairs.

HOLIDAYS CENTRE



ONLINE BOOKING



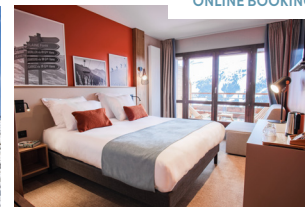
UCPA SPORT VACANCES - CENTRE FLAINE LINDARS

Flaine Forum
Tel. +33 (0)4 50 47 65 75
Reservation: +33 (0)9 69 390 392

flaine-lindars@ucpa.asso.fr
www.ucpa.com

The UCPA Lindars Center, located in the heart of Flaine Forum, welcomes you all inclusive. Thanks to this very complete formula, you benefit from all the comfort and the quality of the ski lessons.

CLUB-HOTEL



ONLINE BOOKING



BELAMBRA FLAINE PANORAMA

Flaine Les Gérats
Tel. +33 (0)1 46 10 13 14
www.belambra.com/locations/auvergne-rhone-alpes/club-flaine-panorama-hiver

encadrement.plateau@belambra.fr

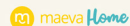
Facing the Grand Massif and directly at the foot of the slopes, come and discover the latest Belambra 5B club for your family holidays. With our all Inclusive formula, we invite you to let go and put your feet under the table. Children's clubs from 4 months to 17 years, indoor pool, spa, 2 restaurants, bar, discover the best of the Belambra experience.



Galerie Marchande Flaine Forum 74300 Flaine
Tél. : +33 (0)4 50 90 46 70
E-mail : flaine@mountaincollection.com



Flaine Réservation



astrid
immobilier
VALUATION - PURCHASE - SALE

Here,

**WE RENT
& MANAGE**

your holiday
apartments and chalets

+33 (0)4 50 90 40 40

www.flaine-reservation.com
accueil@flaine-reservation.com

2 receptions

- **Flaine Forum**
at Galerie Marchande
(above Tourist Office)
- **Hameau de Flaine**
at Général Store

Our experts from **Astrid Immobilier** will assist you in your projects
to **buy or sell** an apartment, chalet or commercial premises.

+33.(0)6.11.43.41.05
www.astridimmo.com * vente@astridimmo.com
Galerie Marchande Flaine FORUM * 74300 Flaine



**IMMOBILIÈRE
RENAND**

FEEL THE DIFFERENCE !

- Menu of management services
- Weekly accommodations rentals
- Seasonal rentals
- Buy/sell property

Find us in Flaine Forum above Tourism Office

Tel : **+33(0)4 50 90 81 40**
Mail : flaine@immorenand.com
www.immorenand.com



WHITE HORIZON
PROPERTY SERVICES

WHITEN YOUR HORIZONS

- Tailor-made property services
- Rental Management & conciergerie
- Valuations & sales
- High quality presentation, virtual tours & video

© www.whitehorizonservices.com
☎ +33644342010 © contact@whitehorizonservices.com

ESTATE AGENCY ❄️🌸



ONLINE BOOKING



PRIVATE CENTRAL RESERVATION FLAINE RESERVATION

2 RECEPTIONS:

Hameau de Flaine at the General Store
Flaine Forum shopping center (above
Tourist office).

Tel. +33 (0)4 50 90 40 40

accueil@flaine-reservation.com
www.flaine-reservation.com

Flaine Reservation- Maeva Home offers you:

- Apartments near the slopes or chalets in the Hameau de Flaine- for a weekly short stay • Ski pass, ski classes and equipment at reduced rates

We will also assist you in your plans to buy or sell an apartment, chalet
or commercial space in Flaine.

ESTATE AGENCY ❄️🌸



ONLINE BOOKING



MOUNTAIN COLLECTION

Flaine Forum • Tel. +33 (0)4 50 90 46 70

flaine@mountaincollection.com / www.mountaincollection.com

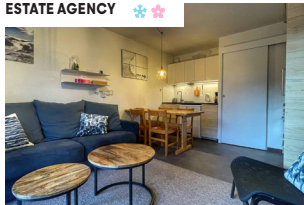
Our estate agency offers you a large choice of apartments and chalets on
rental during the winter season and the summer season.

Our bilingual team can propose you:

- Special offers on package including accommodation +ski passes and ski lessons
- Services like bedlinen and towels rental, final cleaning • The Flaine Summer Pass
included in your booking of at least 6 nights during the summer season

We can also help you in purchasing or in evaluating and selling your ski property.

ESTATE AGENCY ❄️🌸



ONLINE BOOKING



AGENCE IMMOBILIÈRE RENAND

Flaine Forum shopping center
Tel. +33 (0)4 50 90 81 40

flaine@immorenand.com
www.immorenand.com
www.grandmassif-resa.com

This agency offers rental management services, concierge services and
para-hotel services, sales and specialized purchases online and in the
international market.

ESTATE AGENCY ❄️🌸



ONLINE BOOKING



WHITE HORIZON PROPERTY SERVICES

Flaine Forum
Tel. +33 (0)6 44 34 20 10

contact@whitehorizonservices.com
www.whitehorizonservices.com

This agency offers rental & property management, bespoke conciergerie
services and para-hotelier services for properties, specialized online and
international rental & sales.

SIMOND

SPORTS



- **Flaine Forum :**
Residence Aldébaran,
near the cable car
Tel. +33 (0)4 50 90 80 97
- **Flaine Forêt :**
Pierre et Vacances
Tel. +33 (0)4 50 90 85 39
- **Flaine Front de neige :**
Hotel & residences Alhéna
Tel. +33(0)4 50 90 80 97

SALES • Fusalp, Colmar, Spyder, Millet, Timberland, MOON BOOT, Uvex, Bollé, Julbo.

RENTAL • Skis - Snowboard - Ski touring equipment - Cross country skiing

REPAIR / PREPARATION WORKSHOP

SIMOND SPORTS

Résidence Aldébaran - 74300 FLAINE FORUM
Tel. +33 (0)4 50 90 80 97
sm@simond-sports.com - www.simond-sports.com

Tel. +33 (0)4 50 90 99 41
ludo.olivar@gmail.com
extrem-mountain.com

SKISET SK

FORUM
Extrem Mountain
next to tourist office



- Technical clothing sport and fashion
- Board shop
- Hire ski and snowboard

7/7 - 8.30am - 7.30pm

- Repair and maintenance workshop
- Boot fitting

SKISHOP
HELIOS
café

Tel. +33 (0)4 50 90 80 97
+33 (0)4 50 47 75 34

sm@skishop-helios.com
www.skishop-helios.com



BLACKside.

www.blackside.fr

Partenaire :

Netski.

TECHNICAL CLOTHING



Open:
8am - 7.30pm

Show your **BONUS CARD DISCOUNT**

➔ **Discount 20% on rental**

Tel. +33 (0)4 50 90 83 06



Flaine Super Ski

Technical Center

RENTAL / SALE / REPAIRS

Ski boots specialist, boot fitting, racing, ski touring • 3 shops

Flaine les Gérats
Rés. Les Portes du Grand Massif
Tel. +33 (0)4 50 18 74 88

Flaine Forum
Im. Aldebaran
Tel. +33 (0)4 50 90 82 88

Flaine Forêt
Galerie marchande
Tel. +33 (0)4 50 90 30 62

Online reservation, - 20 % to - 45 %

www.flainesuperski.com

2 sport shops in Flaine

General Sport

Flaine - Le Hameau
04 50 90 87 16

SKISET SK

Snow Service

Flaine - Forêt
04 50 90 87 12

RENTAL - SALE - REPAIR/TUNING

Save up to 40% buy booking on ski-rental-flaine.com

ski-rental-flaine.com - info@ski-rental-flaine.com

BLACK SIDE - NETSKI ❄️❄️

Flaine Forum

Tel. +33 (0)4 50 90 83 06

jm@blackside.fr

www.blackside.fr

The Flaine's freeride, snow/ski shop.

Open from 8.30am till 7.30pm nonstop.

SKISET FORUM - BOUTIQUE EXTREM MOUNTAIN ❄️❄️

Flaine Forum

Tel. +33 (0)4 50 90 99 41

contact@extrem-mountain.com

www.skiset.com

Snowsports equipment rental (ski, snowboard, snow shoes, ski touring...) and electric mountain bike rental (summer). Men's, women's and children's ski clothing, technical ski clothing and accessories available to buy.

SKISET GÉNÉRAL SPORT ❄️

Flaine Les Gérats - Hameau de Flaine

Tel. +33 (0)4 50 90 87 16

SKISET SNOW SERVICE ❄️

Flaine Forêt - Galerie marchande

Tel. +33 (0)4 50 90 87 12

info@ski-rental-flaine.com

www.ski-rental-flaine.com

2 shops open daily.

Rental and sale of ski equipment and accessories. Panoramic webcam. 2 repair and maintenance workshops.

SPORT 2000 - FLAINE SUPER SKI ❄️

Flaine Les Gérats - Les Portes du Grand Massif residence

Tel. +33 (0)4 50 18 74 88

magasin@flainesuperski.com / www.flainesuperski.com

Flaine Forum

Tel. +33 (0)4 50 90 82 88

Flaine Forêt

Tel. +33 (0)4 50 90 30 62

3 shops. Rental and sale. Specialists in competition, boot fitting and ski touring.

SIMOND SPORTS - SKIMIUM ❄️

sm@simond-sports.com / www.simond-sports.com

3 shops.

Flaine Front de neige

Hotel & residences Alhénéa

Tel. +33(0)4 50 90 80 97

Flaine Forum

Tel. +33 (0)4 50 90 80 97

Flaine Forêt

Tel. +33 (0)4 50 90 85 39

The quality of major brands combined with a personalized approach.

SKISHOP HELIOS ❄️

Flaine Les Gérats - Résidence Les Terrasses d'Hélios

Tel. +33 (0)4 50 90 80 97

+33 (0)4 50 47 75 34

sm@skishop-helios.com

www.skishop-helios.com

A warm welcome and a high level of expertise are the main arguments for our business, which is entirely devoted to skiing in all its forms.

❄️ Winter ❄️ Summer



Taxis & transport

Taxis

MONT-BLANC TAXI

Airport, bus and train station transfers. Mini-bus service. Services for reduced mobility travelers.

Tel. +33 (0)6 16 768 768
+33 (0)4 50 900 745
info@montblanc-taxi.com
www.montblanc-taxi.com

TAXI MERMI'YAUTE

A 5-seater taxi that can accommodate 4 passengers, with the option of a baby seat (on request). Transfers to and from airports, stations and other destinations. All distances, 7 days a week. Various meeting points in Flaine.

Tel. +33 (0)6 13 27 28 76
taximermi.yaute@gmail.com

TAXI RHÔNE-ALPES

Hospital, airport, bus and train station transfers. Any distances. 7/7. Services for reduced mobility travelers.

Tel. +33 (0)6 83 96 88 94
taxi.rhone-alpes@hotmail.fr

TRANSÈVÈNEMENTS

All-distance transport for up to 7 people, enclosed luggage trailer - 24/7.

Package rates for day and weekend outings: Annecy - Chamonix - Grenoble...

Tel. +33 (0)6 67 80 07 02
transevenements@yahoo.fr

Individual and group transport

ALPS-DIRECT.COM

Group and individual transport. Airports, bus and train stations. Any distances, 7/7.

Tel. +33 (0)6 12 98 12 50
+33 (0)4 50 90 30 08
info@alps-direct.com
www.alps-direct.com

ERICA TRANSFERTS

Group and individual transfers, 9-seater vehicles "4 motion". Airport, train stations, bars/ restaurants/nightclubs, excursions, ski trip and off-piste recovery - 24/7.

Tel. +33 (0)6 23 25 00 72
mail@ericatransfers.com
www.ericatransfers.com

FMJ VOYAGE

Group and individual transport. Airports, bus and train stations. 7/7. Excursions.

Tel. +33 (0)4 50 89 56 37
info@fmj-transport.com
www.fmj-voyage.com

GO MASSIF

Passenger transport between Flaine and Geneva airport.

Online booking
www.gomassif.com

Electric car charging points

Flaine is continuing its environmental and ecological commitment with the installation of 4 electric car charging points at the entrance to Flaine Forum and in the P3 car park in Flaine Forêt. These SYANE public network charging points will be open without access restrictions. Any user will be able to access them 24 hours a day, 7 days a week, regardless of the type of vehicle used.

MONT-BLANC TAXI

- Resort, Geneva airport, train stations transfers
- Repatriation
- 8-seater minibus WW Confort 4x4

Tel/Fax +33 (0)4 50 90 07 45 +33 (0)6 16 768 768
info@montblanc-taxi.com • www.montblanc-taxi.com



TAXI MERMI'YAUTE

Welcome aboard! Taxi for 4 passengers, with baby seat available (on request). Transfers to and from airports, train stations and other destinations. All distances, 7/7.

Tel. +33 (0)6 13 27 28 76
taximermi.yaute@gmail.com



TAXI RHÔNE ALPES

- Hospital, airport, bus and train stations transfers. Any distances. 7/7.
- 9-seater minibus - 4x4.
- Services for reduced mobility travelers.

Tel. +33 (0)6 83 96 88 94 • taxi.rhone-alpes@hotmail.fr

TRANSÈVÈNEMENTS

Transfers to airports (Geneva, Lyon, Chambéry) and all stations. Closed luggage trailer, vehicle for up to 7 people, 24/7. All-inclusive rates available for day/weekend trips.

Tel. +33 (0)6 67 80 07 02 • transevenements@yahoo.fr

EBA EUROBUS

Regular bus line Flaine ↔ Geneva Airport.

On Saturdays and Sundays, from Geneva, return transport by the day with Grand Massif ski pass included.

<https://eba-eurobus.com/skibus>

Tel. +41 22 731 01 19 • booking@eba-eurobus.com



AIRPORT TRANSFERS • ALL DISTANCES



ALPS-DIRECT

AIRPORT TRANSFERS • TRANSPORT DE VOYAGEURS

+33 (0)4 50 90 30 08

+33 (0)6 12 98 12 50

www.alps-direct.com

info@alps-direct.com



GOMASSIF.COM

Geneva Airport ↔ Flaine

Shared and private transfers

Online prices and reservations

erica transferts

+33 06 23 25 00 72

mail@ericatransferts.com



Genève ↔ Flaine
Cluses ↔ Flaine
Samoëns ↔ Flaine

All destinations 24/7

FMJ Voyage

- Airport and railway station transfers, other destinations, 24 hours / 7 days.
- Transport for 1 to 53 passengers : estate car, people carriers, minibus and coach available, with driver.
- We organise trips, excursions and sightseeing circuits in the Rhône-Alpes region.



FMJ Voyage
15, rue des Acacias
74300 Magland

Booking and Information

Tel: 04 50 89 56 37

Fax: 04 50 34 43 18

Email: info@fmj-transport.com

Site: www.fmj-voyage.com



Easy access

Resort with a pedestrianised centre

With a compact pedestrianised centre with services, shops, leasures areas and lifts all just a stone's throw from your accommodation.

Free shuttle buses

They run throughout the day between Flaine Forêt, the Hameau de Flaine and the Col de Pierre Carrée (in winter: nordic area and in summer: golf course).

In summer, free shuttles run daily between Les Carroz and Flaine.

Bus transfers

Cluses train station

Several buses run every day in winter and in summer. Reservations mandatory.

Les Carroz-Flaine Express line.

Tel. +33 (0)4 50 91 49 96 • www.arvi-mobilite.fr • www.altibus.com

Geneva airport and train station

Contact EBA Eurobus bus company, the taxis, the individual and group transports.

EBA Eurobus +41 22 731 01 19

booking@eba-eurobus.com

<https://eba-eurobus.com/winter-regular-line/geneva-flaine>

Mandatory booking.



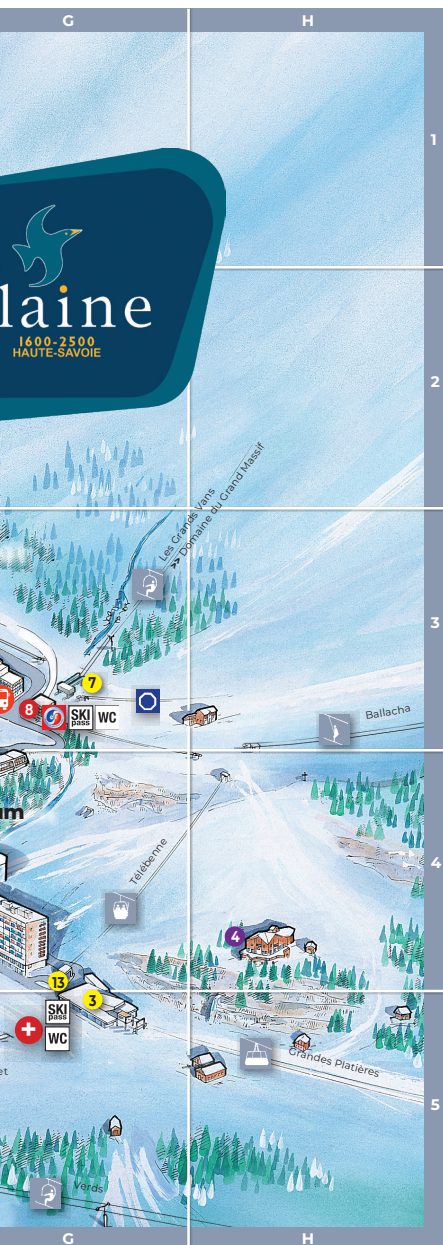
Resort map



SALOMON



FLAINE TOURIST OFFICE
OFFICIAL PARTNERS



Services

- 1 E4 Police - School
Syndicat Intercommunal
- 2 E3 Auditorium
- 3 G5 Ski lift office
- 4 E4 Medical center
- 5 E4 Chapel
- 6 E4 Heating plant
- 7 G3 Club "Little One"
- 8 F4 Forum shopping center
- 9 E3 Forêt shopping center
- 10 F4 Nursery
- 11 F4 Post office
- 12 F4 Pharmacy
- 13 G5 Rescue center
- 14 E4 Technical office
- 15 F5 Rabbit Club
- 16 F4 Library / Art center
- 17 C5 Urban waste
- 18 C3 Fireman
- 19 D3 Welcome office (car park)
- 20 F4 Public pool
- 21 A2 Général Store
- 22 F4 Laundry

Apartments blocks

- 1 G4 Aldébaran
- 2 F3 Andromède
- 3 E5 Antarès
- 4 D3 Arche
- 5 F3 Balance
- 6 F3 Bélier
- 8 E5 Bellatrix
- 9 E4 Bételgeuse
- 10 E5 Capella
- 11 G3 Capricorne
- 12 F4 Cassiopée
- 13 F3 Castor
- 14 B2 Châteaux de Cran
- 15 F5 Deneb
- 16 D3 Doris
- 17 D4 Eridan
- 18 E3 Gémeaux
- 19 E3 Pégase
- 20 E3 Grande Ourse
- 21 D3 Iris
- 22 E3 Pollux
- 23 G4 Grand Vans
- 24 E3 Sagittaire
- 25 E3 Sirius
- 26 E4 Vega
- 27 E3 Verseau
- 28 D4 Étoile polaire
- 29 E3 La Petite Ourse
- 30 D3 Les Pléiades

Hotels

- 1 F4 Totem Friendly Hotel***
- 2 E4 Rockypop Flaine Hotel & Spa****
- 3 F4 Alhénéa Hotel & Spa
- 4 H4 Lapiaz hotel

Tourist residences

- 1 F3 La Forêt***
- 3 G3 Les Terrasses de Veret***
- 4 C2 Les Terrasses d'Eos*****
- 5 B1 Les Portes du Grand Massif****
- 6 F4 Le Centaure****
- 7 C2 Les Terrasses d'Hélios*****
- 8 G3 Le Panoramic***
- 9 F5 Alhénéa Residence & Spa

Holiday centres

- 1 D4 U.C.P. A. Altaïr
- 2 F4 U.C.P. A. Les Lindars

Club-hotels

- 1 E4 MMV Le Flaine***
- 2 B2 Belambra Panorama****

Chalets

- 1 C1 Chalet Masson du 27° BCA

Estate agencies

- 1 F4 Flaine Réservation
- 2 F4 Mountain Collection
- 3 F4 Agence Immobilière Renand
- 4 F4 White Horizon Property Services



Tourist Office



Parks :
P0, P1, P2, P3, P4, P5, Pcol



Bus park



Free shuttle stop



Public lift



ATM



Water closed



Parking cash desk



Ski lift office



First aid post



Ecole du Ski
Français meeting



ESI Grand Massif meeting



Nordic area

SHIFT ALPHA BOA® 115

**ZERO
COMPROMISE.
100%
FREERIDE.**



SALOMON