



Guide  
winter/summer  
2026



[flaine.com](https://flaine.com)









# Welcome to Flaine, a ski resort full of surprises!

## A DOORSTEP SKIING RESORT WITH A PEDESTRIANISED CENTRE

Enjoy all the joys of a bustling resort that offers the advantages of a **compact pedestrianised centre** with services, shops and ski runs all just a stone's throw from your accommodation.

## A SURPRISING ACCESSIBLE RESORT

Just an hour's drive from Geneva airport, 2 hour's drive from Lyon and 4 hours from Paris by TGV, Flaine is **unquestionably your local resort**.

## A 360° RESORT

We'll take you to the Grandes Platières summit at an altitude of 2,500 metres, where the beauty of the landscapes will blow you away: 360° views over the **Mont Blanc, Aravis, Belledonne and Jura** mountain ranges.

## HOME TO AMAZING SKIING

The resort is nestled in **the peaks of the 4<sup>th</sup> largest interconnected ski areas in France, Le Grand Massif** (Flaine – Les Carroz – Morillon – Samoëns – Sixt).

## A RESORT WITH EXCEPTIONAL SNOW-COVER

Nestling at **altitudes of 1,600 to 2,500 metres**, Flaine enjoys a unique **geographical location** at the heart of a natural cirque, boasting fantastic snow cover right up until the end of the season.

## FLAINE SUMMER PASS

**Summer in Flaine is free!\***

Access to over 35 free activities and entertainments\* with a simple wristband.

*\*Offer combined with a stay at a participating accommodation partner*

## CLASSIFIED RESORT

"Le Flaine Historique" was awarded the **"20<sup>th</sup> Century Heritage"** label and some buildings are **classified as "Historic Monuments"**. This is also an open-air museum with **Dubuffet, Picasso and Vasarely** monumental artwork.

## A RESORT COMMITTED TO THE ENVIRONMENT

Flaine has been committed to the environment with the environmental observatory since 2007. The Grand Massif ski area continues its sustainable approach by implementing concrete actions to reduce its pressure on the environment with an action plan by 2030.

# Summary

**ACTIVITIES** 04

**28 FLAINE IN SUMMER**

**HERITAGE** 11

**32 SHOPS & SERVICES**

**PISTE MAP** 12

**35 ENVIRONMENT**

**FLAINE IN WINTER** 14

**36 ACCOMMODATIONS**

**FAMILY & ENTERTAINMENT** 17

**46 SPORT SHOPS**

**SKI LESSONS** 19

**48 EASY ACCESS & TRANSPORT**

**BARS & RESTAURANTS** 23

**50 RESORT MAP**

**FOOD SHOPS** 27



# DEEP<sup>®</sup> NATURE

A moment of wellness  
in the heart of the mountains



## Deep Nature Flaine Spa

Les Terrasses d'Hélios  
Lieu dit Les Gérats  
74300 Flaine  
Tel : +33 (0)4 50 55 94 73  
E-mail : flaine@deepnature.fr



**SPA NUXE**  
ACCESSIBLE UPON  
RESERVATION  
OF A TREATMENT  
**ROCKY  
POP** rockypop.com

**TOTEM**  
Spa Pure Altitude  
Your wellness experience  
3 treatment rooms including 1 duo  
2 saunas and 1 outdoor jacuzzi  
Fitness - Yoga - Relaxation area  
Flaine Forum | +33 4 90 06 09 82  
www.totem-flaine.com

**SPA MONTAGNES DU MONDE<sup>®</sup>**  
OPEN TO NON-RESIDENTS  
**ALHÉNA**  
HOTEL - RESIDENCE - SPA  
+33 (0)4 85 58 24 45





## RESORT'S AQUATIC CENTRE ❄️ 🌸

**2,000 m² dedicated to your well-being!** 25 m swimming pool and children's paddling pool - sauna - turkish bath - hydrotherapy tubs - aquagym - aquabike.

**Open to all resort guests.**

Tel. +33 (0)4 50 90 47 46

Flaine Forum

## FITNESS AND CARDIO-TRAINING ROOM ❄️ 🌸

**Various cardio and weight training devices** are available to help you get back in shape or improve your training: treadmill, bike, weight benches...

Tel. +33 (0)4 50 90 47 46

Flaine Forum

## DEEP NATURE FLAINE SPA ❄️ 🌸

**Take full benefit of the fresh air and prolong your relaxation in the indoor space of the Deep Nature spa**, with sauna, hammam, sensory and Norwegian shower and herbal tea area. Enjoy Deep Nature's signature personalized treatments.

Tel. +33 (0)4 50 55 94 73

Les Terrasses d'Hélios residence - Flaine Les Gérats

## NUXE SPA ❄️

Nestled in the heart of the new RockyPop Flaine, located in Forum area, the Spa Nuxe is the perfect place to take care of yourself. By choosing a **prodigious Nuxe care or massage**, you access the 400 sqm spa facilities including swimming pool, Kneipp path, sauna and hammam in a zen and resourcing atmosphere...

Tel. +33 (0)4 80 16 12 21

RockyPop Flaine Hotel & Spa - Flaine Forum

## TOTEM SPA ❄️

**With its breathtaking view of the mountains, the Totem Spa invites you to relax and unwind.** It has three cabins, including one for two, **offering Pure Altitude face and body treatments.** The wellness area includes two saunas and a relaxation area opening onto a terrace with an outdoor jacuzzi. A fitness room and yoga classes complete this well-being experience.

Tel. + 33 (0)4 30 05 03 52

Totem Hotel - Flaine Forum

## MONTAGNE DU MONDE SPA ❄️ 🌸

**Rejuvenate in the exclusive Spa Montagnes du Monde® wellness area**, a spa with heated indoor pool where you can enjoy a sauna, hammam, whirlpool or Nordic bath as well as a variety of beauty treatments and relaxing massages.

Tel. +33 (0)4 85 58 24 45

Alhena Hotel & Spa - Flaine Forum





# Sporting activities

## CITY GAME ❄️❄️

Criss-cross the resort in search of major artworks and try to find answers to puzzles to solve their mysteries. A fun way to explore Flaine with the family!

**2 formulas according to ages and levels.**

*Discount with Flaine Summer Pass.*

**Flaine tourist office**

**Tel. +33 (0)4 50 90 80 01 • [www.flaine.com](http://www.flaine.com)**

## CLIMBING ❄️

**4 natural sites and 1 artificial wall in Flaine.**

**Cœur de montagne**

**Tel. +33 (0)6 66 95 20 87 • [rodrigomoraga@yahoo.fr](mailto:rodrigomoraga@yahoo.fr)**

## CROSS-COUNTRY SKIING ❄️

**3 runs for all to discover.**

*Free access.*

**Access by free shuttles.**

## DOG SLEDDING ❄️

**Share a special moment with dogs!** Supervised by professionals, learn how to mush, or just sit back comfortably as you travel over the snow-covered trails (over 3s).

**Evasion nordique**

**Tel. +33 (0)6 82 09 50 03**

**[www.evasion-nordique.com](http://www.evasion-nordique.com)**

**Les Granges de Heidi**

**Tel. +33 (0)6 66 46 10 97**

**[www.lesgrangesdeheidi.fr](http://www.lesgrangesdeheidi.fr)**

## ESCAPE GAME ❄️

Team up with your friends and family for one epic mission: unlock your Savoyard aperitif trapped inside a giant cooler!

Put your skills to the test and solve the puzzles to break the code and enjoy some delicious local treats.

Are you ready to take on the challenge and free your Savoyard snack?

*Discount with Flaine Summer Pass*

**Flaine tourist office**

**Tel. +33 (0)4 50 90 80 01 • [www.flaine.com](http://www.flaine.com)**

## FISHING ❄️

In lakes of Flaine, Vernant, Airon and in the rivers, license on sale at the Tourist Office.

**Fishing initiation workshop:** A qualified instructor helps prepare materials and provides guidance throughout the session. Fishing rod and bait are provided and included.

*Discount with Flaine Summer Pass.*

**Flaine tourist office**

**Tel. +33 (0)4 50 90 80 01 • [www.flaine.com](http://www.flaine.com)**

## GEOCACHING ❄️

Halfway between a treasure hunt and orienteering, geocaching is to find small boxes filled with trinkets, the "caches" hidden by insiders in picturesque corners or after a beautiful walk. Everything, GPS in hand! Take to the game during your summer holiday and try to find the "caches" in Flaine!

*Geocaching app.*

## GOLF ❄️

You'll get your fill in Flaine and Le Grand Massif! Set off to discover new activities, for guaranteed thrills! **At 1,900 metres, it is one of the highest golf course in Europe**, with breath-taking panoramic views over the Aravis mountain range. **A leading mountain golf course.** Flaine golf course is unique thanks to its technically challenging, spectacular course. Lasting 4½ hours, with fun inclines it's somewhere to enjoy an intense day of sports. Before setting off on the **18-hole course**, why not spend some time warming up on our various **putting greens, practice zones, approach areas and training bunkers**. With a range of varied difficulty levels, this course is **accessible to all golf licence holders, no handicap required:** amateur and experienced players, children and adults alike.

*Open from July to September.*

**Tel. +33 (0)4 50 90 85 44 (in season)**

**[www.golf-flaine-lescarroz.fr](http://www.golf-flaine-lescarroz.fr)**

## Ice Quad - Ice tour

Hiring quads kids and adults, buggy  
Evening party with dinner  
Seminars, multi-activity

Booking: +33(0)6 21 09 99 02

From 8.00am to 9.00pm

[icequadflaine@gmail.com](mailto:icequadflaine@gmail.com)

[www.icequad.fr](http://www.icequad.fr)



## ICE DRIVING SCHOOL



**PILOTAGE**  
SUR **GLACE** flaine

Prices:

• Try-out (Porsche, Alpine, Subaru, Toyota): €80

• Discovery course for 1h30: €210

**École de Pilotage sur Glace**  
**74300 FLAINE**

**Tel. +33 (0)4 50 90 82 59**

**[www.circuitglace.com](http://www.circuitglace.com)**



## GRAVITY ZERO ❁

Try the "Zero Gravity" experience, you will be propelled through the void at breakneck speed! Sensible soul to withhold!

*Flaine Forêt at the arrival of Télébienne | from 6 years old | min. 20kg*

**Booking at Grandes Platières cable car or on [www.grand-massif.com](http://www.grand-massif.com)**

## GUIDED HIKES AND MOUNTAIN BIKE TOURS ❁

Philippe, a mountain guide and mountain bike instructor, offers themed walks for a day or several days.

**Flaine mountain**

**Tel. +33 (0)6 03 29 44 86 • [contact@flaine-mountain.com](mailto:contact@flaine-mountain.com)**

## HAVE A BALL! ❁

Children can try their hand at rolling a beautiful wooden ball decorated with the resort logo around an outdoor course.

*Ball for sale at Tourist office.*

## ICE DRIVING ❁

There are certain similarities between steering your skis and steering a car: acceleration, braking, negotiating corners... Whether fast or taking it easy, the ice-driving school offers a range of packages: from introductions to multi-day courses for learning how to master a vehicle on an ice-covered road.

**Tel. +33 (0)4 50 90 82 59 • [www.circuitglace.com](http://www.circuitglace.com)**

## ICE QUAD AND BUGGY RZR 800 ❁

Experience life as a racing driver, behind the wheel of a buggy or quad bike, on a 700-metre ice track. Children can be just like the grown-ups with quad bikes accessible from the age of 7.

**Tel. +33 (0)6 21 09 99 02 • [www.icequad.fr](http://www.icequad.fr)**

## ICE RINK ❁

Little ones and grown-ups will love gliding on the natural outdoor ice rink. From 3 years old.

**Flaine Forum**

## KID'S QUAD ❁

Quads for kids from 3 to 15 years old.

*Discount with Flaine Summer Pass.*

**Tel. +33 (0)6 21 09 99 02 • [kidsquadflaine@gmail.com](mailto:kidsquadflaine@gmail.com)**

## MAISON DE LA MONTAGNE ❁

**With outings to suit all abilities**, our mountain guides will help you discover Flaine and the surrounding area: hiking, mountain biking, climbing, via ferrata, caving, white water sports...

**Tel. +33 (0)4 50 90 81 00**

## MARKED TRAILS FOR WALKING AND SNOWSHOEING ❁

Flaine is a rare beauty for you to discover. For snowshoeing and walking, maintained, marked trails are **free to access** and situated at the Col de Pierre Carrée.

*Access by free shuttle.*

## MOUNTAIN KART ❁ ❁

Hit the slopes on an all-terrain kart and live a unique and fun experience! *Descents from Aup de Vêran cable car in winter and on Ballacha in summer.*

**Reservations at the ticket offices of the Grandes Platières cable car or on [www.grand-massif.com](http://www.grand-massif.com)**

## OUTDOOR GAME AROUND MOUNTAIN LAKES ❁

This treasure hunt with a storyline will help you discover 3 of Flaine's nearby lakes. A wonderful way to hike and get kids walking with a fun goal.

*Free game with avec Géodyssée app.*

Dog-sled rides in winter and in summer.



**Les Granges de Heidi**

Tel. +33 (0)6 66 46 10 97  
[www.lesgrangesdeheidi.fr](http://www.lesgrangesdeheidi.fr)

### ÉVASION NORDIQUE

Introduction to drive dog harnessing

**Tel. +33 (0)6 82 09 50 03**

[evasion.nordique.74@wanadoo.fr](mailto:evasion.nordique.74@wanadoo.fr)  
[www.evaison-nordique.com](http://www.evaison-nordique.com)

### LA VACHE QUI RIDE



Snowshoeing & Dinner in teepee

Tel. +33 (0)6 85 02 37 00  
[lavachequiride.com](http://lavachequiride.com)

### IGLOO RAQUETTES

Head to a secret igloo on snowshoes for an unforgettable gourmet break!

**Tél. +33 (0)6 59 58 09 91**  
[igloo.raquettes@gmail.com](mailto:igloo.raquettes@gmail.com)



**PARAPENTE PLANÈTE**  
VOLS BIPLACE  
ENSEIGNEMENT  
Ecole professionnelle labellisée FFVL

- Tandem paragliding Flights
- Basic & advanced Courses

Summer office : **Ski2000 ProShop Bootfitting**  
1 route du Servery 74300 LES CARROZ

**+33-(0)6-52-94-33-81**  
[www.parapente-planete.com](http://www.parapente-planete.com)

FFVL  
Ecole Française de Vol Libre  
EFVL  
Ecole Française de Vol Libre  
ancv  
CHÈQUE VACANCES



**PARAPENTE AIR PASSION**

Tandem flight approved by FFVL

Tel. +33 (0)6 85 75 03 81

contact@airpassionlescarroz.fr  
[www.airpassionlescarroz.fr](http://www.airpassionlescarroz.fr)  
Facebook : AirPassionParapenteLesCarroz

### MAISON DE LA MONTAGNE ALDPS FLAINE

Supervised activities and outings during the summer.

Tel. +33 (0)4 50 90 81 00

- Hiking
- E-Mountain Biking
- Climbing
- Canyoning
- Potholing
- Via Ferrata
- Rafting / Air boat / Canorcraft / Hydrospeed
- And many more...

### FLAINE PARAPENTE

Paragliding

Tel. +33 (0)6 60 08 81 79

broisinl@hotmail.com

[www.flaine-parapente.com](http://www.flaine-parapente.com)

### CŒUR DE MONTAGNE

CLIMBING - CANYONING

VIA FERRATA

Tel. +33 (0)6 66 95 20 87

rodrigomoraga@yahoo.fr

### SNOWMOBILE

Located between  
Les Carroz and Flaine

Tel. +33 (0)6 12 21 40 60  
[www.deltaevasion.com](http://www.deltaevasion.com)



### OUTDOOR LASER TAG ❁

Just like paintball, this is played in the same way, but without getting hurt, for guaranteed fun! You can play the role of a sniper with super accuracy thanks to the telescopic sight!  
From 7 years old. Discount with Flaine Summer Pass.

**Flaine tourist office**

Tel. +33 (0)4 50 90 80 01 • [www.flaine.com](http://www.flaine.com)

### PARAGLIDING ❁ ❁

Combine thrills with breath-taking panoramic views by flying over the snow-capped mountains in a paraglider. With accompanied first flights, introductory and improvers flights offered as part of courses, discover the ski area and Flaine resort as you've never seen it before!

• **Air passion**

Tel. +33 (0)6 85 75 03 81

[www.airpassionlescarroz.fr](http://www.airpassionlescarroz.fr)

• **École du Ski Français**

Tel. + 33 (0)4 50 90 81 00

[www.esf-flaine.fr](http://www.esf-flaine.fr)

• **Flaine Parapente**

Tel. +33 (0)6 60 08 81 79

[www.flaine-parapente.com](http://www.flaine-parapente.com)

• **Parapente Planète**

Tel. +33 (0)4 50 18 57 18

+33 (0)6 52 94 33 81

[www.parapente-planete.com](http://www.parapente-planete.com)

### SLEDGE ❁

**Three toboggan runs** let all ages glide to their heart's content. Located in Flaine Forum, under the iconic Jean Dubuffet sculpture and at the Col de Pierre Carrée (red zone for the over 6s and black for the over 12s).

Free access.

### SNOWKITE ❁

Pulled along by the wind, set off to conquer vast expanses of snow... on a snowkite! A winter version of kitesurfing, it's an activity that offers an intense rush of freedom! Defy the laws of gravity and enjoy an exceptional, peaceful setting!

Equipment not supplied - Intermediate level required

**Flaine Master Class**

Tel. +33 (0)4 50 90 87 16 • [www.ski-rental-flaine.com](http://www.ski-rental-flaine.com)

### SNOWMOBILE ❁

Set off on a snowmobile adventure for an unusual ride that's full of surprises and breath-taking landscapes! The ride takes place after night fall, on ski runs and through forestland.

From 1.35m for passengers.

**Nature Motoneige**

Tel. + 33 (0)6 12 21 40 60 • [www.deltaevasion.com](http://www.deltaevasion.com)



## SNOWSHOEING & DINNER IN TEEPEE ❄️

Authentic and unusual mountain activities with La Vache Qui Ride.

Tel. +33 (0)6 85 02 37 00

info@lavachequiride.com

www.lavachequiride.com

## SNOWSHOEING HIKES IN GROUP ❄️

**To unveil the secrets of this beautiful natural setting, call upon a professional!** Our service providers organise group snowshoeing hikes. When night falls, put on your snowshoes for a star-lit hike before enjoying an authentic Savoyard meal.

• **École du Ski Français**  
Tel. + 33 (0)4 50 90 81 00  
www.esf-flaine.fr

• **Flaine Master Class**  
Tel. +33 (0)4 50 90 87 16  
www.ski-rental-flaine.com.

• **Flaine Mountain**  
Tel. +33 (0)6 03 29 44 86  
www.ecole-ski-flaine.fr

## TENNIS 🌸

4 artificial lawn courts at the heart of an exceptional setting.

Equipment loans (deposit required) and free access with Flaine Summer Pass.

Flaine tourist office

Tel. +33 (0)4 50 90 80 01 • www.flaine.com

## THE IGLOO SNOWSHOE EXPERIENCE ❄️

Escape on snowshoes and trek across pristine snowy fields to a hidden igloo tucked away in the forest. Enjoy this unique setting with a delicious snack, aperitif, or a traditional Savoyard fondue meal. A magical moment for both kids and adults.

Tél. +33 (0)6 59 58 09 91

igloo.raquettes@gmail.com

## TRAIL RUNNING ❄️ 🌸

Embark on a trail running session in Flaine and admire a wealth of different landscapes, from exceptional views over the Mont Blanc massif to the mountainous balconies overlooking the Arve Valley. In the winter, you'll have the choice between trying out all 3 trails, or something more physically demanding with 2 timed challenges. And in the summer, you'll run over marked routes, but don't forget to bear in mind the altitude.

*This free app "Flaine Les Carroz espace outdoor" will be a real navigation aid to anyone who's never without their phone.*

## TREETOP ADVENTURE TRAILS 🌸

These 2 courses offers pathways where acrobatic workshops take place: Tarzan jump, monkey bridge, zip line or more unusual workshops, you will rub shoulders with the treetops.

*From 1.40m and from 1.25m (accompagnied).. Discount with Flaine Summer Pass.*

Flaine tourist office

Tel. +33 (0)4 50 90 80 01 • www.flaine.com

## YOGA ❄️ 🌸

Theses easy, accessible routes includes 10 Yoga postures to carry out individually or with friends, in winter and summer.

*Accessible via free shuttlebus or, if you're feeling fit, on foot from the resort centre.*

In winter, the mountain professionals of Flaine offer **coaching and outings in telemark, touring skiing, splitboard, freeride riding, freestyle riding, speed-riding and cross-country skiing.**

## On Grand Massif AREA 🌸

### VIA FERRATA ET CANYONING

Cœur de montagne

Tel. +33 (0)6 66 95 20 87

rodrigomoraga@yahoo.fr

### CANIRANDO AND CANIWALK

Dog-sled rides.

Evasion Nordique

Tel. +33 (0)6 82 09 50 03

www.evasion-nordique.com

Les Granges de Heidi

Tel. +33 (0)6 66 46 10 97

www.lesgrangesdeheidi.fr

### POTHOLING

Maison de la montagne

Tel. +33 (0)4 50 90 81 00

### RAFTING, CANORAF, HYDROSPEED, AIRBOAT

You'll find the very best in white water sports on Grand Massif.

Maison de la montagne

Tel. +33 (0)4 50 90 81 00

# Cultural & musical activities



## CINÉMA ❄️ 🌸

To not miss the latest blockbuster or your favourite director's new film, take a trip to the cinema. With 2 screenings a day, your film is sure to be on the bill.

Discount with Flaine Summer Pass (in summer only).

Tél. +33 (0)4 50 90 43 12

Flaine Forum

## ART CENTRE ❄️ 🌸

Combining sports and culture, Flaine invites you to its Art Centre which hosts a series of contemporary artist's exhibitions.

## LIBRARY ❄️ 🌸

The Art Centre has lending library including books in English, a multimedia zone, a youth section with a reading corner.

## HERITAGE GUIDED TOUR ❄️ 🌸

Would you like to find out more about the creation of this unusual resort? A guided tour is available free of charge so you can discover Flaine's architectural and artistic heritage.

To discover this unaccompanied Art trail, QR codes have been installed near the works. Just scan them with a smartphone.

Art centre

Tel. +33 (0)4 50 90 41 73

Flaine Forum

[www.centredartdeflaine.com](http://www.centredartdeflaine.com)

## MUSIC, A PRESTIGIOUS HERITAGE 🌸

Classical music has had a presence in the resort right from the start, holding a very special place in the heart of Flaine locals. Throughout the summer, many free concerts are offered in the magnificent Flaine auditorium.

Three music academies continue the tradition of high-level music teaching, placing the emphasis on excellent working conditions for both teachers and pupils.

Académie Internationale de Musique

[www.aimdeflaine.com](http://www.aimdeflaine.com)

Opus 74

[www.opus74-flaine.com](http://www.opus74-flaine.com)

Musique à Flaine

[www.musiqueaflaine.fr](http://www.musiqueaflaine.fr)

## CINEMA STUDIO 1600

Flaine Forum

Tel. +33 (0)4 50 90 43 12

[allocine.com](http://allocine.com)

## FLAINE ART CENTRE

Contemporary Art exhibitions, lending library, cultural guided tour...

Open from Sunday to Friday - 4 pm to 7 pm.

Flaine Forum - Tel. +33 (0)4 50 90 41 73

[centre.art@flaine.com](mailto:centre.art@flaine.com) - [www.centredartdeflaine.com](http://www.centredartdeflaine.com)



## Station Bauhaus

**A Bauhaus resort set at the heart of a natural cirque at an altitude of 1,600 metres? That's Flaine for you!**

With its unique architecture, Flaine was built in the 1960's by Éric and Sylvie Boissonnas, art patrons of the 20<sup>th</sup> Century who loved both modern art and classical music. They called upon the services of Bauhaus master, Marcel Breuer, world-renowned for works such as the Unesco headquarters in Paris and the Whitney Museum in New York. He decided to create **a prototype for town planning, architecture and design** at the heart of a natural cirque, with the golden rule being to respect nature, integrating the resort into the mountains without disturbing the surroundings.

Flaine is an example of architecture and urban development, with **an interplay of light and shadow** depending on the sun's position as it hits the concrete buildings, **their facades cut like diamonds**. Breuer succeeded in creating an original design that is fascinating, resolutely **modern and radical**. Whilst the exposed **concrete buildings** continue to surprise, they also **reflect the nearby limestone formation**, blending perfectly into their rocky surroundings.



## A listed resort in a class all of its own

**A true gem of French heritage**, the highly original resort of Flaine has been awarded many titles, with historical Flaine (Flaine Forum + Flaine Front de neige + Flaine Forêt) **receiving the "20<sup>th</sup> Century Heritage"** label. Its exceptional heritage includes an ecumenical chapel **listed as a Historic Monument** since December 2014, "Le Flaine" hotel, which defies gravity and gives the impression of being suspended mid-air, and the "Bételgeuse" building, which accentuates the resort's contrasts with its "diamond point" facades. The latter two buildings have been **included in the French supplementary list of historic monuments** since 1991.



## An Arty Resort

**Master architects and contemporary artists** created Flaine's built heritage to showcase the beauty of the landscapes, adorning it with remarkable sculptures. It's the only resort in the world to have monumental and architectural artworks on permanent display, notably including Dubuffet's "Le Boqueteau", Picasso's "La Tête de femme", as well as Vasarely's "Les Trois Hexagones"!

**Flaine is also a genuine open-air museum !**

*A free guided tour of the resort's artistic and architectural heritage during the season.*





# GrAND MASSIF



AIGUILLE VERTE ▲  
4122m

GRANDES JORASSES ▲  
4208m

AIGUILLE DU M ▲  
3842m

## FUN ZONES

### FLAINE

- 1 Quartz Park
- 2 Urban'z
- 3 Funny Slope

### LES CARROZ

- 1 Cool Zone de l'Oasis
- 2 Boardcross de l'Oasis

### MORILLON

- 1 Marvel Enchantée
- 2 KidsPark
- 3 Boarder
- 4 FunkyPark

### SAMOËNS

- 1 SeptiSnake
- 2 La Forêt Mystérieuse de ZiziPanpan
- 3 Drop-Zone
- 4 Piste pédagogique

## FREERIDE ZONES

Pistes sécurisées non damées  
/ Secured ungroomed pistes

### FLAINE

- 1 Agate
- 2 Combe de Vêret
- 3 Onyx (Combe de Gers)

### LES CARROZ

- 1 Corbalanche

### SAMOËNS

- 1 DVA Park

## ACTIVITÉS

- 1 FLAINE – Mountain Kart
- 2 LES CARROZ – Luge sur Rail
- 3 MORILLON – Luge Marvel
- 4 SAMOËNS – Apéro Suspendu

Info réservation sur le site [grand-massif.com](http://grand-massif.com)



ESPACE LUGE

Sledging area

SIXT

760m - Salvagny  
P C H

RETOUR DE LA PISTE  
« CASCADES »  
consultez le planning horaires  
des Navettes du Gifre sur le  
site [grand-massif.com](http://grand-massif.com)  
« CASCADES » PISTE RETURN  
consult the shuttle schedule  
of the Gifre on the website  
[grand-massif.com](http://grand-massif.com)

SAMOËNS

700m - Village  
P C H

SAMOËNS

1600m - Les Saix  
P C H

SAMOËNS

800m - Vercland  
P C H

MORILLON

1100m - Les Esserts  
P C H

MORILLON

700m - Village  
P C H

ARACHES

LES CARROZ

1200m - Village  
P C H

FLAINE

1740m - Vernant  
P C H

SKIPASS / FORPASS

SKIPASS / FORPASS

SKIPASS / FORPASS

SKIPASS / FORPASS

SKIPASS / FORPASS

SKIPASS / FORPASS

SKIPASS / FORPASS

SKIPASS / FORPASS

SKIPASS / FORPASS

SKIPASS / FORPASS

SKIPASS / FORPASS

SKIPASS / FORPASS

SKIPASS / FORPASS

SKIPASS / FORPASS

SKIPASS / FORPASS

SKIPASS / FORPASS

SKIPASS / FORPASS

SKIPASS / FORPASS

SKIPASS / FORPASS

SKIPASS / FORPASS

SKIPASS / FORPASS

SKIPASS / FORPASS

SKIPASS / FORPASS

SKIPASS / FORPASS

SKIPASS / FORPASS

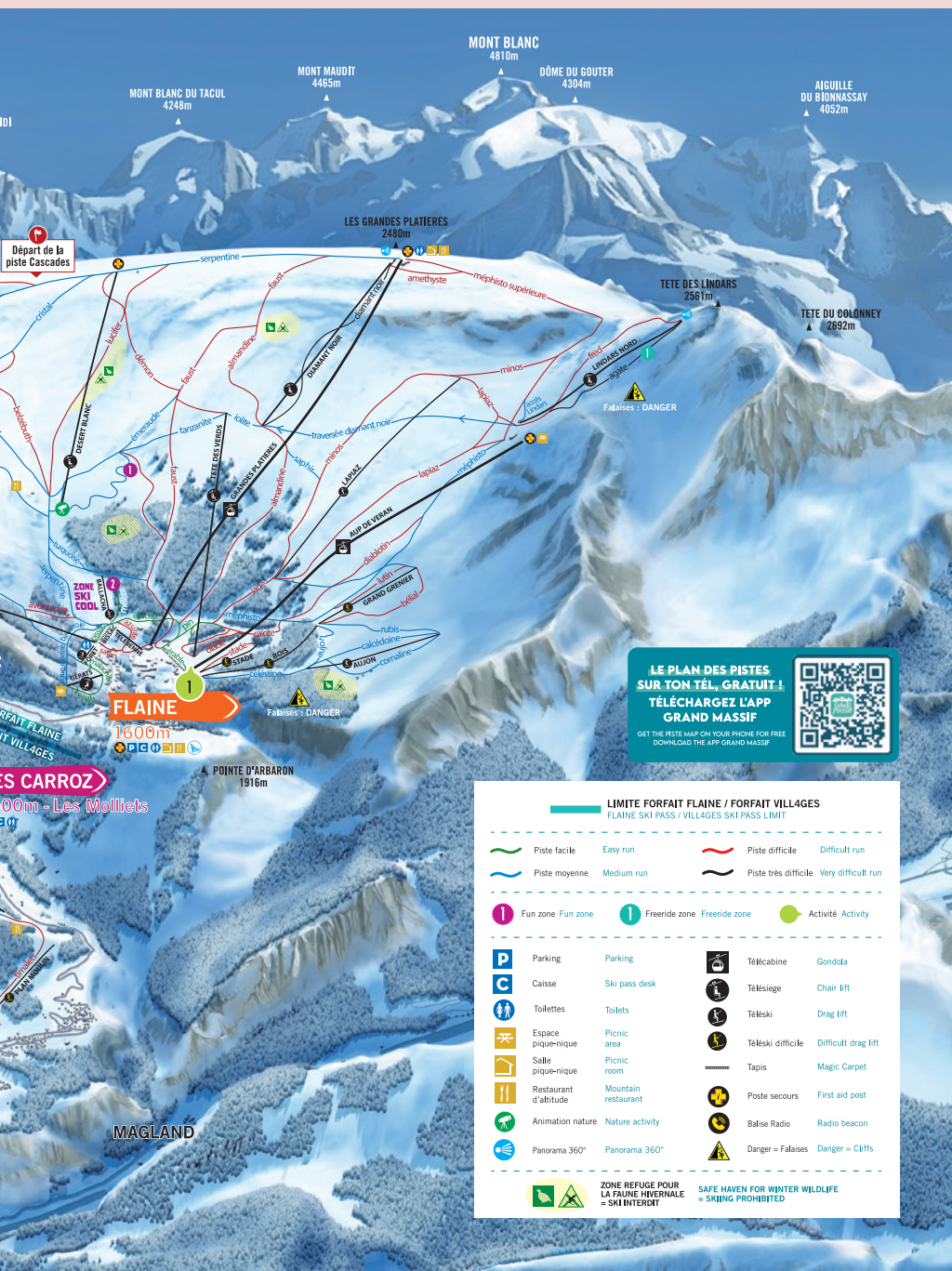
SKIPASS / FORPASS

SKIPASS / FORPASS

SKIPASS / FORPASS

SKIPASS / FORPASS





# Grand Massif

Tel. +33 (0)4 50 90 4000  
grand-massif.com

## FLAINE SKI AREA

1600 M - 2500 M

24 lifts

64 marked runs

## GRAND MASSIF SKI AREA

700 M - 2500 M

62 lifts

139 marked runs

LE PLAN DES PISTES  
SUR TON TÉL. GRATUIT !  
TÉLÉCHARGEZ L'APP  
GRAND MASSIF  
GET THE PISTE APP ON YOUR PHONE FOR FREE  
DOWNLOAD THE APP GRAND MASSIF



## Flaine

From 13<sup>th</sup> December 2025\* to 19<sup>th</sup> April 2026

\*From 13<sup>th</sup> to 19<sup>th</sup> December 2025, subject to weather and snow conditions.

## Grand Massif

From 20<sup>th</sup> December 2025 to 12<sup>th</sup> April 2026

Find all information about the ski area, news, weather information, webcams and much more on [www.grand-massif.com](http://www.grand-massif.com)

# Ski areas



Real-time ski area  
information



Webcams

## Grand Massif and Flaine ski areas

With 5 resorts each boasting complementary qualities – Flaine with its urban style, family-friendly Les Carroz, traditional Morillon, Samoëns at the heart of nature and the hidden gem of Sixt-Fer-à-Cheval, as well as being the most diverse, **the Grand Massif is the 4<sup>th</sup> largest interconnected ski area in France.**



Flaine's ski area invites you to enjoy a vast selection of snowsports, including skiing, freeride and freestyle, following the mountains' natural contours!

Snowsports fans will love **the stunning views from the top of Les Grandes Platières with Mont Blanc** at the tip of their skis, as well as the huge variety of long, playful runs, renowned for always being well groomed. Whilst the majority of runs offer an abundance of easy wide curves, some can be quite steep with narrow sections that require a good level of fitness and technique.

What's more, you can access **Flaine's ski area from 4 different locations in the resort centre**, which means you can avoid the morning rush as you make your way to the slopes.

Flaine enjoys a unique geographical location at the heart of a natural cirque, **boasting fantastic snow cover right up until the end of the season.**



## Unmissables spots

### MÉLÈZE

Accessed via the Ballacha ski lift, this green run is located in the heart of the beginner's area and is protected by Flaine Forest.

### SERPENTINE

Offering 7 km of pure snowsports, the Serpentine blue run on Les Grandes Platières is caressed by long twists and turns, basking in the sun. Very popular with skiers of all levels, it offers breathtaking views across the whole of the resort of Flaine.

### CASCADES

14 kilometres of enchanting landscapes through the heart of a nature reserve... This red run is perfect for family and friends, accessible to all and will leave you with incredible memories! Round trip: 3h00 | Grand Massif skipass mandatory

### FAUST

At Les Grandes Platières, the infamous Faust red run starts off at a fast pace, followed by two walls over a steady gradient that culminate in the heart of the resort.

### LA COMBE DE GERS

Set off the beaten track, the Combe de Gers reveals its secrets only to those who follow the route that skirts around Tête Pelouse to reach this little corner of paradise. An amazing off-piste area awaits fans of freeride and steep slopes, with 800 metres of vertical drop, north-facing powder fields and south-facing slopes that offer exceptional spring snow! And to mix it up a little, head to the ungroomed but marked and safe "Lindars", "Diamant noir", and "Véret" runs.



## Skipass 2025-26\*

		ADULTS (15 to 74 yrs)	CHILDREN (8 to 14 yrs)
FLAINE	4 consecutive hours	€53.10	€42.50
	1-day	€59.00	€47.20
GRAND MASSIF	4 consecutive hours	€54.90	€43.90
	1-day	€61.00	€48.80

**MINI PRICES** all season for children under 8 and seniors aged 75 and over (proof of ID required).

## A LA CARTE SKIING

4-hour, day or 6-day pass, Flaine or Grand Massif, beginner pass... find your magic formula to enjoy the beautiful slopes of the ski area at your own pace.



\*Prices excluding hands skicard (+€2/skipass). Non-refundable rechargeable support. Information given for reference purposes only.

# Winter experiences



## Fun zones

**3 areas** in Flaine where you can ride woops, rails and many other fun obstacles on the snow.

### ZE FUN SLOPE

A real boardercross set on the Tourmaline run. A fun run consisting of moguls and banked turns, for maximum thrills individually or in a group.

Access: Grands Vans chairlift

### URBAN'Z

A protected and accessible zone dedicated to kids and beginners. This learning area allows you to discover woops and banked turns in a gentle slope.

Access: Ballacha skilift

### ZE FREESTYLE PARK

Fun space, consisted of several boxes, jumps and rails with a level ranging from XS to M.

Access: Tête des Verds chairlift



## Ski touring

Ski touring is the ideal activity for all lovers of skiing and nature. Discover the most beautiful panoramas of Flaine and then descend to the resort, skiing on marked trails.

4 routes on Flaine ski area.



## Skiing for all with "handisport"

Snowsports are accessible to everyone thanks to the large number of ski lifts, specially adapted equipment and professional instruction available.

• A 50% discount on the price of your skipass on presentation of a disability card of more than 80%.



## On fine Nordic form

Wintersports holidays are synonymous with peace and serenity. Flaine is a rare beauty for you to discover. It transports you to a world of serenity among the pines. Make the most of your day or après-ski time by enjoying traditional mountain activities that nonetheless offer a complete change of scenery. At 1,844 metres (6 050 ft), the Col de Pierre Carrée is **the highest Nordic ski area in the French Alps to practice nordic sports**, with the most snow cover: nordic skiing – yoga – trail running – marked and maintained paths for snowshoeing and walking – dog sledding.

Access from the resort by free shuttles.



## A paradise for beginners

### This way, it's free!

Beginners are also well catered for here with **4 free ski lifts**, 3 magic carpets (Pré, Michalet and Bissac) and 1 bucket lift, as well as **2 beginners' areas**, including the Pré and Bissac safe zones.

Flaine welcomes you to discover its wide snowy boulevards that are suitable for all, beginners and experts alike. Did you know that **you can get all the way around the ski area using only blue runs**? Perfect for families!

## Children's "ski" clubs

Aimed at teaching children to ski while enjoying themselves, the "Club Piou Piou" (ESF Flaine) is available for 3 to 12- year olds and the "Little One"(Grand Massif ESI) from 4 ½ years old.



**In Flaine, there's just as much happening off the slopes and hikes!**

**The Tourist Office spoils little holidaymakers with a huge range of free entertainment!**

There's a packed entertainments program throughout the winter and summer seasons, with a chance for children to enjoy a huge number of activities: magic and circus shows, concerts, balloon modelling, snowman-building contests, snow glider biking, "fauna and flora" workshops, astronomy, performing arts, children's concerts and stories... Everything you need to make your holiday as extraordinary as possible!

Not forgetting unmissable encounters: a visit from Father Christmas, Carnival time, an Easter Egg hunt, as well as lighted drone shows and legendary torch-lit descents, Bastille Day and August 15<sup>th</sup> festivities!



**All the program**



**ESI**  
GrAND MASSIF

**flaine**  
1400-2500  
HAUTE-SAOIE

**SKI SCHOOL  
& SNOWBOARD  
FLAINE**

PRIVATE LESSONS  
CHILDREN GROUPS  
SNOWBOARD  
OFF-PISTE

9 persons maximum  
Test and medal free

**www.esi-grandmassif.com**  
flaine@esi-grandmassif.com  
+33 (0)450 90 84 41



**The ESF's Team  
is committed to making  
your holidays in Flaine  
a pure moment of  
happiness**

Savoyarde dinner followed  
by a torchlight descent



Half-day snowshoes  
hiking

Looking to escape and  
explore Flaine, let's do  
it together



During all winter we propose to you our different group lessons ski, snowboard, freestyle and competition, but also our customized courses



**Come to see us !**

**ESF**

Im. Aldébaran—Flaine Forum  
Rés. P&V La forêt—Flaine Forêt  
Rés. P&V Les terrasses d'Hélios—Flaine 1800  
Tel: +33 (0) 450 908 100  
Email: info@esf-flaine.fr



## Ecole de Ski Français

The ESF instructors at Flaine welcome you throughout the season to help you discover all forms of snow sports in a friendly group atmosphere or in individual lessons to help you progress at your own pace.

SKI, SNOWBOARD GROUP COURSES		
	ADULTS/YOUNG PEOPLE +13 YRS	SKI - CHILDREN 3 TO 12 YRS
6 half days	€255	€235*

\*Medals included for 6 ½ day lessons for children's ski levels.

### The ESF offers:

- Team Rider courses, from €240 per week.
- Half-day snowshoe outings, €28/pers (equipment provided).
- Half-day competition courses.
- Flèche and Chamois passes, open to all, €10/pers.
- Ski Privilège "6 children max" from beginner to Etoile de Bronze - 6 lessons at €222.
- Competition courses €240/per week.

*Reservations recommended throughout the winter season.*

Ecole du Ski Français de Flaine

Tel. +33 (0)4 50 90 81 00

info@esf-flaine.fr

www.esf-flaine.fr



## ESI Grand Massif

The school has been based in Flaine since 1974, and its instructors all hold state qualifications.

Group lessons limited to 9 people to help everyone progress. Fun, modern teaching methods to delight holidaymakers.

- **Tapering prices:** from €65/hour.
- **Children's special:** adapted lessons in native language (French, English, Dutch, German, Spanish, Italian and Russian).
- **Specialist:** Freeride and Freestyle courses.
- **Private lessons** from 2 to 80 years old.

Private lessons: instructors specialising in skiing, snowboarding, telemark skiing, Nordic skiing and snowshoeing will cater for everyone's needs: beginners, touring, technique, freeride, freestyle, touring (on skis, snowboard or snowshoes).

### GROUP CLASSES to learn while having fun

From 4,5 years old. Lessons include a snack break at the Bissac chalet restaurant for the youngest one

Booking recommended.

GROUP CLASSES LIMITED TO 9 PEOPLE - SUNDAY TO FRIDAY		
SKI / SNOWBOARD	5 TO 14 YRS	€280

ESI Grand Massif

Tel. +33 (0)4 50 90 84 41

flaine@esi-grandmassif.com

www.esi-grandmassif.com



## Catherine et Nicolas - Ski instructors

Catherine, specialised in private tuition for children from 2 years ½.

Nicolas, Individual lessons for children and adults at all levels.

Tel: +33 (0)6 09 26 60 08

Tel: +33 (0)6 79 14 31 01

[www.skicat74.com](http://www.skicat74.com)

## FLAINE MOUNTAIN - ECOLE SKI FLAINE

### Ski instructors and mountain leader

Ski-telemark-snowboard-splitboard-handi ski-ski touring-snowshoeing, children ski lessons

Magasin Flaine Sport - Flaine Forêt • +33 (0)6 03 29 44 86

[contact@ecole-ski-flaine.fr](mailto:contact@ecole-ski-flaine.fr) • [www.ecole-ski-flaine.fr](http://www.ecole-ski-flaine.fr)



[www.skiflainemoniteurs.com](http://www.skiflainemoniteurs.com) [guy.pezet@wanadoo.fr](mailto:guy.pezet@wanadoo.fr)



### INDEPENDENT SKI INSTRUCTORS

PRIVATE SKI LESSONS Adults or Children  
all levels / piste or off piste

GUY +33607195609

LUC +33685413553

MARIE-CLAUDE +33681082697



## FLAINE MASTER CLASS

Général Sport - Le Hameau de Flaine

Tel. +33 (0)4 50 90 87 16

+33 (0)6 12 90 84 14

[info@ski-rental-flaine.com](mailto:info@ski-rental-flaine.com)

[www.ski-rental-flaine.com](http://www.ski-rental-flaine.com)

## FLAINE SKI CLINIC

Lynne Stainbrook

Tel. +33 (0)6 68 66 76 17

[lynnestainbrook@aol.com](mailto:lynnestainbrook@aol.com)

[www.flaineskiclinc.com](http://www.flaineskiclinc.com)

## PASCAL CHENOT

Tel. +33 (0)6 50 200 888

[pascal.skiorganisation@yahoo.fr](mailto:pascal.skiorganisation@yahoo.fr)

## DJÉ SNOWBOARD

Jérôme Granthil

Tel. +33 (0)6 64 23 58 98

[ecolesnowboardflaine@gmail.com](mailto:ecolesnowboardflaine@gmail.com)

[www.ecolesnowboardflaine.com](http://www.ecolesnowboardflaine.com)

## BROISIN LAURENT - HIGH MOUNTAIN GUIDE

Off-piste skiing, ski touring and Vallée Blanche

Tel. +33 (0)6 60 08 81 79

[broisinl@hotmail.com](mailto:broisinl@hotmail.com)

[www.flaine-parapente.com](http://www.flaine-parapente.com)

# Instructors and guides

## Instructors

### CATHERINE AND NICOLAS

I ski with CATHERINE! Qualified ski instructor specialised in private tuition for children from 2 years ½. French and English speaking.

Nicolas, a professional ski teacher, both patient and encouraging with a great experience. English and French speaking. Individual lessons for children and adults at all levels.

Catherine Pouppeville: +33(0)6 09 26 60 08

Nicolas Pouppeville: +33(0)6 79 14 31 01

[catherinepouppeville74@gmail.com](mailto:catherinepouppeville74@gmail.com)

[www.skicat74.com](http://www.skicat74.com)

### PASCAL CHENOT

Pascal, ski/snowboard instructor and cameraman since 1985, brings his expertise and experience during your stay in Flaine, gentle and gradual approach tailored to your needs. All levels (children – adults), private lessons (min. 2h), day or half-day.

Pascal Chenot

Tel. +33 (0)6 50 200 888

[pascal.skiorganisation@yahoo.fr](mailto:pascal.skiorganisation@yahoo.fr)



## FLAINE MOUNTAIN

Qualified ski instructors and mountain leaders, who live in Flaine all year round. They share their experience and versatility in snow sports teaching as well as for the exploration of unspoiled snow-covered nature. Skiing - ski touring - off-piste - telemark - snowboard - splitboard - snowshoeing - adaptive skiing - children ski.

**Philippe Clerc: +33 (0)6 03 29 44 86**

**contact@ecole-ski-flaine.fr**  
**www.ecole-ski-flaine.fr**

## DJÉ SNOWBOARD / JÉRÔME GRANTHIL

Instructor, State qualified, specialized snowboard, offers private and collective courses for levels: beginner - intermediate - expert.  
 8 people max / group, from Sunday to Friday.

**Tel. +33 (0)6 64 23 58 98**  
**ecolesnowboardflaine@gmail.com**  
**www.ecolesnowboardflaine.com**

## FLAINE SKI CLINIC

Lynne Stainbrook, an American ski instructor with 45+ years of international experience, provides private lessons to individuals or small groups of all levels. Lynne teaches proper technique through ski skills using a gentle psychological approach. French National Diploma (ENSA), BASI level 3 & Race Trainer, ISIA, PSIA, APSI.

**Tel. +33 (0)6 68 66 76 17** *(during the season)*  
**lynnestainbrook@aol.com**  
**www.flaineskiclinc.com**

## FLAINE MASTER CLASS

Flaine born and bred, state qualified ski instructors, Serge and Philippe Cornillat offer lessons for all levels (in French, English or Spanish); hourly, ½ day, full day – on piste and off-piste, freeride, ski touring, split boarding, snow kite, snowshoes.

**Général Sport – Hameau de Flaine**  
**Tel. +33 (0)4 50 90 87 16**  
**info@ski-rental-flaine.com**  
**www.ski-rental-flaine.com**

## MONITEURS INDÉPENDANTS FLAINE GRAND MASSIF

Marie-Claude, Luc and Guy, specialists in your private lessons - adults or children from 1 to 6 students max.

Come and discover the Flaine and Grand Massif ski areas with them, on marked itineraries or off-piste. You can also learn or improve your ski touring skills.

**Guy: +33 (0)6 07 19 56 09**  
**Luc: +33 (0)6 85 41 35 53**  
**Marie-Claude: +33 (0)6 81 08 26 97**  
**guy.pezet@wanadoo.fr**  
**www.skiflainemoniteurs.com**

## High mountain guide

Laurent Broisin invites you to discover the off-piste in and around Flaine.

**Off-piste skiing – ski touring – vallée Blanche.**

**Tel. +33 (0)6 60 08 81 79**  
**broisinl@hotmail.com**





## Restaurant Le Michet

Un cadre unique  
à Flaine !

*Service à table  
Midi et soir*

*Restauration  
traditionnelle*

*Spécialités  
savoyardes*



Tél. +33 (0)4 50 90 80 08

2 chalets d'alpage  
authentiques  
flaine forum



## L'Éloge

*Bar Restaurant  
(service à table)*

Tél. +33 (0)4 50 90 85 91



  
**Le Bissac**  
Flaine Forêt

ouvert 9h30 -17h

*Bar - Self service  
et Restaurant*

*(sur réservation conseillée)*

**croq'raquettes le jeudi soir**

Tél. +33 (0)4 50 90 81 32

[www.lebissac.com](http://www.lebissac.com)

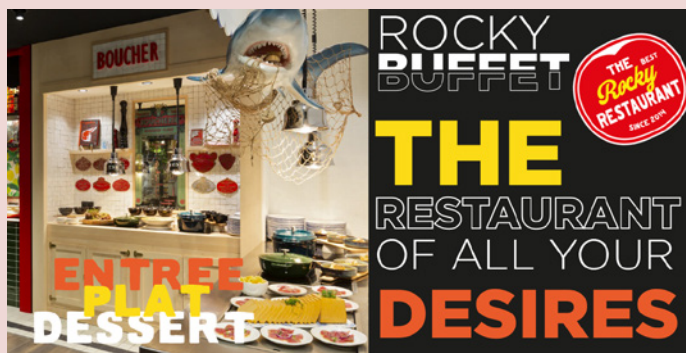


1 seule adresse : [leschaletsdumichet@wanadoo.fr](mailto:leschaletsdumichet@wanadoo.fr)

## RESTAURANT- BAR LE DESERT BLANC

**Au sommet du DMC avec vue  
panoramique sur le Mont-Blanc**

TEL:04.50.90.82.09 E-mail: [ledesert.blanc@orange.fr](mailto:ledesert.blanc@orange.fr)



**LA PENTE À JULES**

restaurant



**+33 4 50 90 87 42**



## On slopes

### LE BISSAC ❄️

Tel. +33 (0)4 50 90 81 32

**A chalet with a friendly atmosphere!**

Bar - Self-service - Restaurant (non-stop snacking from 9 am to 5 pm).

*Free pedestrian access via Télébenne and Bissac magic carpet*

### LES CHALET DU MICHET ❄️

Tel. +33 (0)4 50 90 80 08

**Refined, inventive cuisine in an authentic 100-year-old sheepfold.**

Our cuisine is a skilful blend of local tradition, French gastronomy and an escapade into the heart of the world's flavors, with an emphasis on fresh, quality produce, local producers and therefore short circuits thanks to daily deliveries.

*Pedestrian access.*

### LE DÉSERT BLANC ❄️

Tel. +33 (0)4 50 90 82 09

**Brasserie/Snack bar & self-service restaurant.**

Panoramic terraces at 2,500 m with breathtaking view of the Mont-Blanc massif!

You can eat on the go, sip a delicious hot chocolate, or simply take time to eat in the restaurant and choose a starter from the buffet and a traditional dish.

*Pedestrian or ski access via the Grandes Platières cable car..*

### L'ÉLOGE ❄️

Tel. +33 (0)4 50 90 85 91

**A cosy restaurant in a rustic setting.**

The ideal place to enjoy an afternoon drink, with music, before returning to your accommodation.

*Pedestrian access.*

### LAPIAZ ❄️ ❀

Tel. +33 (0)4 50 90 87 66

The menu is deliciously devised and created by the chef, who takes particular care every day to treat your taste buds to fine, hearty dishes in a bistronomic spirit.

For a snack, the snack area, directly accessible from outside in winter, offers homemade burgers, sweet and savoury paninis, wraps, sandwiches and soups.

### LA PENTE À JULES ❄️

Tel. +33 (0)4 50 90 87 42

Open for lunch every day, the restaurant offers a mouth-watering menu. If you're in a hurry, take advantage of the "Jules Express" for a burger, bruschetta, wrap and all sorts of other delicacies.

## Flaine Front de neige

### LA JOYEUSE ❄️

Tel. +33 (0)4 57 44 45 85

**Generous, original and sincere cuisine using local, seasonal produce for lunch,** and homemade pastries for afternoon snacks.

From the first ray of sunshine, you can enjoy the panoramic terrace.

## Flaine Forum

### 1967 ❄️ ❀

Tel. +33 (0)4 50 90 87 40 / +33 (0)6 62 22 04 63

**Open for lunch & dinner.**

In the evening, come and discover **their char-grilled meats.**

All products are local and homemade.

### BAR ROCKYPOP FLAINE ❄️

Tel. +33(0)4 80 16 12 21

**Cocktail menu, beer and wine selection, savory and sweet treats...** the bar caters to every post-ski craving. In a friendly, colorful atmosphere, enjoy the lounge area by the fireplace, or sit back and relax on the large bar stools!

Billiards - table soccer - karaoke - arcade games.

### BLACK SIDE CAFÉ ❄️ ❀

Tel. +33 (0)4 50 90 83 06

With its warm atmosphere and carefully concocted **dishes combining tradition and originality**, Black Side Café will welcome you as if you were at home. Lunch starts at 12 pm with home-cooked food!

### BUFFET ROCKYPOP FLAINE ❄️

Tel. +33(0)4 80 16 12 21

**Foodtruck-style buffets.** Enjoy a wide variety of authentic cuisine based on local produce, around large tables: cold starters, fishmongers, butchers, Italian specialties, cheesemongers, patisseries...

*Reservations recommended.*



**BRASSERIE LES CIMES**  
FLAINE FORUM - 04 50 90 89 64

BRASSERIE - PIZZERIA - SPÉCIALITÉS SAVOYARDES - BAR - LOUNGE



RESTAURANT BRASSERIE LES CIMES BAR PIZZERIA

Menus  
Réservations

## Le Bar Qui Mange

Bar & Restaurant

Flaine Forum, gare de départ du DMC



**CAFE-RESTAURANT-BAR**  
**SABAUDIA**

FLAINE FORET

+33(0)4.50.18.81.77

**TOTEM**

Hotel - Restaurant - Bar  
Non stop 12pm - 10pm

Happy Hours - DJ Set - BBQ  
Lunch à la carte - Tapas - Buffet dinner  
Panoramic terrace at the foot of the slopes

Flaine Forum | +33 4 30 05 03 40  
[www.totem-flaine.com](http://www.totem-flaine.com)




**SUSHI HOUSE**

RESTAURANT **100% JAPANESE**  
OF THE ROCKYPOP FLAINE

[rockypop.com](http://rockypop.com)




**FROMAGE FROMAGE FROMAGE FROMAGE FROMAGE**

**THE RESTAURANT**  
*only for*  
**.CHEESE LOVERS.**


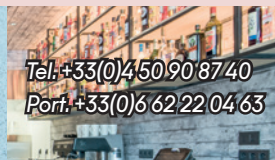
**Frometon**  
[rockypop.com](http://rockypop.com)



Immeuble Aldebaran  
74300 Flaine  
[www.1967boireetmanger.com](http://www.1967boireetmanger.com)

**1967**

Tel: +33(0)4 50 90 87 40  
Port: +33(0)6 62 22 04 63

**RESTAURANT CHEZ DANIEL**

FLAINE FORUM  
SPÉCIALITÉS SAVOYARDES  
04 50 90 81 87  
[CHEZ.DANIELFLAINE@WANADOO.FR](mailto:CHEZ.DANIELFLAINE@WANADOO.FR)




**SNOW FRONT BAR & RESTAURANT**

**ALHENA**  
HOTEL - RESIDENCE - SPA  
+33 (0)4 85 58 24 45




**PIZZERIA RESTAURANT**

**CHEZ PIERROT**  
Since 1979

**RIDE  
EAT  
SLEEP...  
REPEAT**

06 02 08 22 52




**LA JOYEUSE**

Flaine Front de Neige

Tel. +33 (0)4 57 44 45 85





## LE BAR QUI MANGE ❄️ 🌸

**Bar & Restaurant right at the foot of the Grandes Platières lift (DMC)**

Come enjoy a meal or a drink in a warm and relaxed atmosphere! Whether you're taking a quick break between runs or celebrating an epic day on the slopes, we've got you covered.

## BRASSERIE LES CIMES ❄️ 🌸

Tel. +33 (0)4 50 90 89 64

**In a typically mountain setting and friendly atmosphere, with a wood-panelled design inspired by Savoyard chalets**, the Brasserie offers a menu featuring traditional dishes, pizzas, Savoyard specialities and a daily menu.

At the foot of the slopes, a south-facing terrace is the perfect place to relax and enjoy a moment with friends or family in an exceptional setting. In the afternoon, a fast-food service is available for those with a small appetite.

## CHEZ DANIEL ❄️ 🌸

Tel. +33 (0)4 50 90 81 87

**Savoyard speciality restaurant with a warm, friendly atmosphere.** A menu highlighted by fresh & local produce - direct from certain producers.

## L'ÉPICERIE DE BALME ❄️

Tel. +33 (0)6 44 00 61 03

**A gastronomic adventure!**

We offer hot dishes, local produce and family recipes to eat in or take away.

## FROMETON ❄️

Tel. +33 (0)4 80 16 12 21

**Savour the best of Savoie at Frometon!**

Frometon is one of 3 restaurants at the RockyPop Flaine Hotel & Spa, and is open for dinner only. To make the most of it, reserve your table in advance. On the menu: fondue, raclette, charcuterie and other delights... all in a warm and friendly atmosphere!

## LE GRAIN DE SEL ❄️ 🌸

Tel. +33 (0)4 50 18 74 43

**Bar-Restaurant open all day.**

In a friendly atmosphere, we offer breakfast, Savoyard specialities and traditional crêpes for snacks (quick service) all day long.

## MONSTER BURGER ❄️

Tel. +33 (0)9 84 40 71 48

**Burgers & salads**

Monster Burger offers meals at attractive prices.

## O'SPOT ❄️ 🌸

Tel. +33 (0)6 18 01 16 38

Your hosts, a Flaine's family, will be delighted to introduce you to **their local beers and platters, their homemade tapas and their world cuisine.**

## PIZZERIA CHEZ PIERROT ❄️

Tel. +33 (0)6 02 08 22 52 / +33 (0)4 50 90 84 56

Discover the traditional and authentic cuisine of the Lillaz family. For over 40 years, this restaurant has been serving Brazerade and its cep gratin, Savoyard fondues, tartiflette, thin-crust pizzas and the famous blueberry tart. All dishes are home-made and cooked to order.

## RESTAURANT LE BAUHAUS ❄️

Tel. +33 (0)4 50 22 82 22

**Bar & restaurant**

Savoyard inspiration - Seafood - Selection of grilled meats and casseroles. Local products.

## SUSHI HOUSE ❄️

Tel. +33 (0)4 80 16 12 21

The RockyPop Flaine Hotel & Spa has thought of everything, even sushi in the mountains!

**Makis, nigiris, sashimis, california rolls, soups...**

*Limited seating, reservation required.*

## TOTEM-FRIENDLY KITCHEN ❄️

Tel. + 33 (0)4 30 05 03 44

**At any time of the day, Friendly Kitchen welcomes you in a friendly atmosphere, either inside or on the sunny terrace overlooking the mountains.** Tapas to share served non-stop from 12pm to 10pm, à la carte lunch, homemade pastries: here, every break is worth savouring.

In the evening, let yourself be tempted by a generous hot and cold buffet, featuring seasonal products to suit everyone's tastes.

## Flaine Forêt

### ALI-B ❄️ 🌸

Tel. +33 (0)7 71 79 89 01

**Café - Brunch - Cantine**

A fast-food concept, on site or to take away, where we combine flavors and pleasures for recipes as fresh as delicious...

Coffee, sweet bars, wraps, conical buckwheat pancakes: all homemade and good for your taste buds!

## SABAUDIA ❄️ 🌸

Tel. +33 (0)4 50 188 177

**Café - Restaurant - Bar**

Let yourself be welcomed by a pleasant, dynamic team. The menu offers a wide variety of dishes from different countries. Homemade, hearty meals, and lunch and dinner service.

*Reservations recommended.*



### LE LAPIAZ

Hôtel – Restaurant

All the Lapiaz's team is there to welcome you everyday, winter as summer.  
Fresh, cooked and Savoyard food product.  
A snowcat is available to have a easy access to the restaurant, in the evening time, in winter.  
Warm setting with a fire place, sunny big terrace in the middle of the trees.  
We suggest to booked a table for the restaurant at +33 4 50 90 87 66.  
We are available for all questions.

### BLACKside.

Food – Concept store – Clothes – Ski rental

**Flaine Forum**  
Tel. +33 (0)4 50 90 83 06  
jm@blackside.fr



BAR · APERO · PLAISIR

Flaine Forum - Tel. +33(0)6 18 01 16 38

### Le Grain de Sel

Open  
Lunch, Dinner  
7 / 7

Traditional restaurant  
resto-legraindesel.fr

Flaine Forum  
+33(0)4 50 18 74 43

### BEAU & BON

## L'ÉPICERIE de BALME

FLAINE

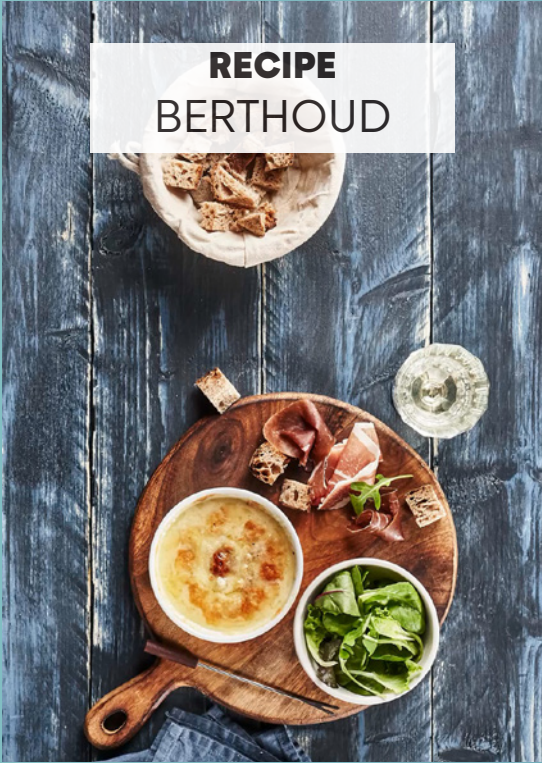
Aldebaran Forum

### ANi-B

CAFÉ · BRUNCH · CANTINE

CONIC CREPE – WRAP – SALAD – SOUP  
COFFEE – DRINK – GOURMET BAR – DRY FOOD

Eat in or take away ☎ 07 71 79 89 01



RECIPE  
BERTHOUD

BERTHOUD – A WARM TASTE OF THE FRENCH ALPS

Looking for a dish that warms both heart and soul after a day in the mountains?

**Berthoud** (pronounced bear-too) is a **comforting specialty** from the **Haute-Savoie** region, made with local Abondance cheese and a splash of wine. Simple, rich, and full of alpine character — it's a must-try!

Prep time: 10 min • Cook time: 10 to 15 mins - Difficultie ★★ ★

- What You'll Need**

  - 500 g of Abondance cheese (Protected Designation of Origin)
  - 4 tablespoons of white wine from Savoie
- 4 teaspoons of Madeira or Port wine
  - 2 garlic cloves
  - A pinch of nutmeg
  - Salt and freshly ground black pepper

- How to Make It**
1. Rub a small individual oven dish (called a «coupelle à Berthoud») with a garlic clove to release its aroma.
  2. Remove the rind from the Abondance cheese, then slice or grate it finely. Place the cheese in the dish.
  3. Season generously with black pepper and a pinch of nutmeg.
  4. Pour in the white wine and a dash of Madeira or Port.
  5. Bake in the oven at 180–200°C (355–390°F) until the cheese is melted and bubbling, with a delicious golden crust on top.
  6. Serve piping hot with fresh crusty bread. For the full alpine experience, pair it with steamed potatoes in their skins, a crisp green salad, local cured meats, and of course, a glass of chilled Savoie white wine.

Please note: This dish contains alcohol. Enjoy responsibly and don't forget — staying active is part of a healthy lifestyle, even on holiday!



# Food shops



## DOUCE FRANCE

**Delicatessen, BIO & regional products**

Delicatessen & cheese  
Regional fine wines and from France  
Raclette, fondues to take away with loan of material.

**OPEN 7/7 IN SEASON**

Galerie marchande - Flaine Forêt  
Tel. +33 (0)4 50 90 85 67



## Flaine Forum

**SHERPA** ❄️ ❁

Tel. +33 (0)4 50 90 86 09

**Your mountain supermarket**

Online order / Home delivery (see conditions in store) - "Raclette", "fondue", "pierrade" to take away with loan of appliances - Charcuterie and cheese by the cut - Tasting and sale of regional products - Wine, Beer & Champagne cellar - Catering - Meat - Rotisserie - Sandwich shop - Bread and pastries baked on site - Pastries - English products - Drugstore - Firewood - Sale of snow chains - Stamps

## Flaine Forêt

**BAKERIE AUX SAVEURS DE FLAINE** ❄️ ❁

Tel. +33 (0)4 50 93 18 44

**Artisan - Baker - Pastry cook**

Snack area, sandwiches and breakfast - Delivery date possible.

## DOUCE FRANCE

 ❄️ ❁

Tel. +33 (0)4 50 90 85 67

**Products from our mountains** such as farmhouse cheeses, sausages, hams, charcuterie by the slice.

Alcohols, honeys and jams selected from our best local artisans and producers.

## Flaine Les Gérats

**SPAR HÉLIOS** ❄️ ❁

Tel. +33 (0)4 50 58 00 38

**A wide range of products and services:** fruits and vegetables, fresh produce, bread and pastries baked on site every day, delicatessen, local produce, wine & champagne cellar, caterer, sale of snow chains, sale of firewood and ecological logs.

## SUPERMARCHÉ SPAR LES TERRASSES D'HÉLIOS

**Open 7/7**

Fruits and vegetables - Fresh product  
Bread and pastries baked on site daily  
Delicatessen, local produce.  
Wine cellar - Champagne

Access: Residence Pierre & Vacances Hélios  
La Placette (level-2)

Tel. +33 (0)4 50 58 00 38  
spar-flaine@wanadoo.fr  
www.spar.fr



# SUMMER IN FLAINE IS FREE! \*

with  
**FLAINE  
SUMMER PASS**



**ARCHERY**

**PEDAL GO-KART**

**ACCRO-ROC**

**TOURNAMENTS**

**ZUMBA**

**MINIATURE  
GOLF COURSE**

**CARDIO FIGHTING**

**GAMINGKAPLA**

**PUMPTRACK**

**CRAZY PONG**

**BOUNCY CASTLES**

**TRAMPOLINES**

**SLIP'N SLIDE FOR TODDLERS**

**ENTERTAINMENT**

**PETANQUE**

**ACCRO-FUN**

**LASER RIFLE SHOOTING**

**ACCRO-KIDS**

**CHILDREN'S PLAYGROUND**

**BUMPER BALL**

**ART CENTRE  
TENNIS**

**CROSS TRAINING**

**YOGA FOR ADULTS & KIDS**

**LIBRARY**

**FOOT DART**

**GIANT GAMES OF CHESS OR CHECKERS**

**TABLE TENNIS**





## Access to over 35 free activities and entertainments\* with a simple wristband!

Thanks to free equipment loans (deposit required), there's no need to cram your suitcases full! You'll find all the accessories you need to enjoy all the activities included in the Flaine Summer Pass.

### TIPS

The Flaine Summer Pass is the cherry on top, providing access to special offers, discounts and even free gifts from shopkeepers and participating service providers!

## Go to [flaine.com](https://flaine.com)

Tourist Office | Tel. +33 (0)4 50 90 80 01  
[welcome@flaine.com](mailto:welcome@flaine.com)

\*Subject to change  
\*Offer combined with a stay at a participating accommodation partner. Listing on [flaine.com](https://flaine.com)





# Walking, mountain biking and trail routes

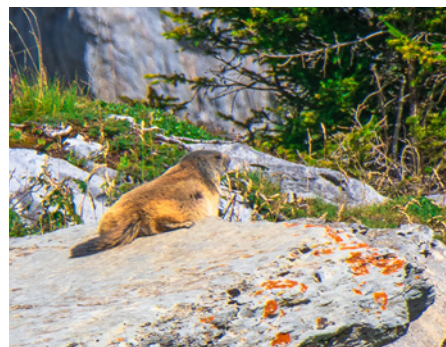
Suddenly discover Mont Blanc right in front of you, observe the local flora and fauna, learn about geology or test your time?

Walk, ride, run! Starting out from Flaine, there's always something to change your view of the mountains, whether you're in contemplative or sporting mode. To make these discoveries easier, take advantage of the facilities offered by the resort: cable car, organised outings, entertainment...

Whether you're a beginner or an expert, our Haute-Savoie resort offers **a wide range of walking, mountain biking and trail routes.**

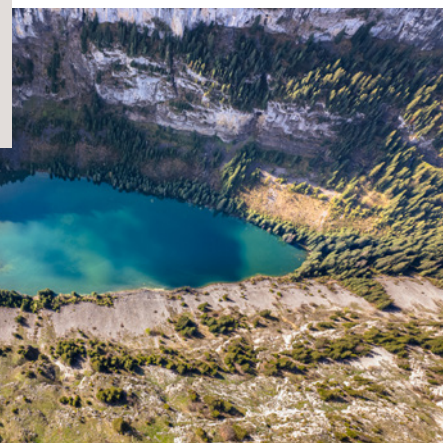
On the edge of the Sixt-Fer-à-Cheval and Passy nature reserves, Flaine offers treasures of flora and fauna: ibex, marmots, jackdaws, bluebells, wild rhododendrons, genepi... and discover majestic and varied landscapes, diverse hikes, from family strolls to long outings and unexpected encounters...

**On foot or on mountain bike**, tackle 200 km of prepared routes of Flaine, **alone or a guided themed outing.**



## Tips

- **Free shuttle buses** run between Les Carroz and Flaine. Each bus stop has one or more ideas for outings.
- **Electrically assisted mountain bike (EAB) charging** at the Sherpa food shop.



Free app  
"Flaine Les Carroz 2ccam  
Espace Outdoor"







## Platé Desert

**Leaving from Flaine**, the cable car will take you at **2,500 metres at the top of Grandes Platières, 7/7.**

An unforgettable surprise awaits you at the summit: **the Mont-Blanc, Aravis, Belledonne or Jura mountains range...**

Just a few steps further and you're in the **Platé Desert, a listed protected natural site, it is the largest 'Lapiaz' formation in Europe**, spreading over several kilometres.

A vast limestone plateau formed by glaciers and sculpted by meltwater, hikers who venture out here will feel as if they're walking on a stone glacier or even the moon!

Encircled by imposing walls, the Platé Desert is a secret garden that will delight nature lovers with its rich plant life, abundant wildlife and spectacular geology. See the fossilised remains of a mountain that was once a seabed 40 million years ago! Encounter ibexes along the way.

It is the starting point for a number of pedestrian hikes and mountain bike routes, and, the boldest amongst you, can access the site by the GR 96 (approx. 3hrs walk).



### PROPERTY SERVICES

- Concierge Company based on place: your referral to manage your property (key handover, inventory etc ...)
- Bed linen, baby kit
- Laundry & Laundromat
- Renovation

Tel. +33 (0)4 50 90 44 73 - [www.property-services-flaine.com](http://www.property-services-flaine.com)



### PLOMBERIE MICHAEL BOULANT

Plumbing, heating, ventilation, spa, sauna, steam bath. Installation, troubleshooting, maintenance, new and renovation

Les Carroz • Tel. +33 (0)6 29 84 24 20  
[michael.boulant@sfr.fr](mailto:michael.boulant@sfr.fr)



Leave your skis at the bottom of the slope

*Patrick's Ski Locker*



Ski boot dryer-Heater

Ski maintenance

*le Panoramic - Flaine Forêt*

00 (33) 450 969 318 [patskilockers@gmail.com](mailto:patskilockers@gmail.com)

# Shops & services

## Boutique

L'ALPAGE ❄️ 🌸

**Souvenir gift store**

Take home a unique souvenir of your Flaine vacation: gifts, liqueurs, decorations...

Flaine Forum shopping center - Tel. +33 (0)4 50 90 85 04

## Services

MAKE YOUR VACATIONS EASIER! ❄️ 🌸

- Welcome your tenants on site.
- Accompaniment, inventory of fixtures, cleanliness checks and any other services you may require.
- Linen rental (sheets, towels, etc.).
- Rental of baby kit, strollers, laundry, laundromat...
- Cleaning kit.
- End-of-stay cleaning.

**Property Services - Flaine Forum**

Tel. +33(0)4 50 90 44 73 - [www.property-services-flaine.com](http://www.property-services-flaine.com)

SKI LOCKERS ❄️

**Why carry your skis all the way back to your accommodation?**

Book your ski locker at the foot of the slopes and the Grands Vans chairlift. Several options are available, including equipment servicing. Open daily all winter from 8.45 am to 5.30 pm.

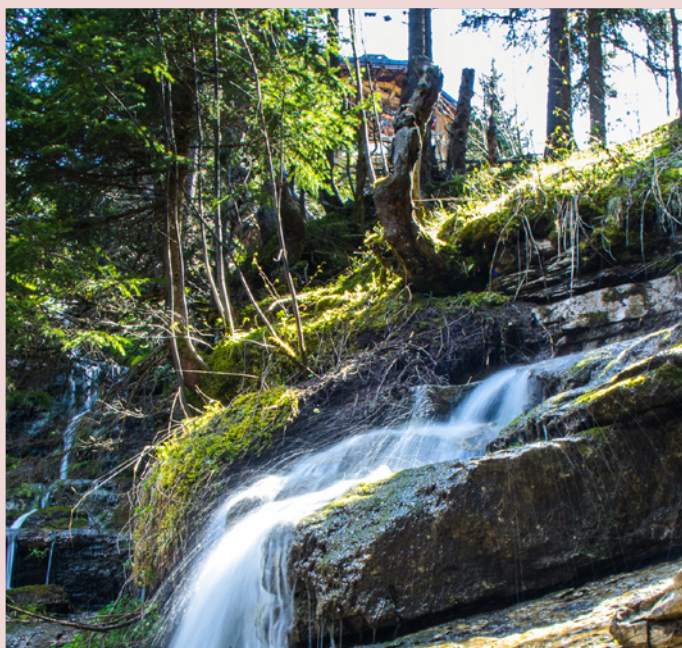
**Patrick's Ski Lockers - Le Panoramic residence - Flaine Forêt**

Tel. +33 (0)6 32 83 82 00 - [patskilockers@gmail.com](mailto:patskilockers@gmail.com)

PLUMBING/HEATING - MICHAEL BOULANT ❄️ 🌸

- Plumbing repairs.
  - Heating work (wood, oil, gas, electric boilers, heat pumps).
  - Sanitary work (bathroom renovation and creation) and VMC.
  - Spa, sauna and hammam installation and maintenance.
- RGE-qualified craftsman.

Tel. +33 (0)6 29 84 24 20 - [michael.boulant@sfr.fr](mailto:michael.boulant@sfr.fr)



## Health

### MEDICAL CENTER ❄️ 🌸

**Winter season:** Monday to Saturday from 9 am to noon and from 2 pm to 7 pm / Sunday & bank holiday from 10 am to noon and from 2 pm to 6 pm.

**Summer season:** Monday to Friday, from 10 am to noon.

Flaine Forum

Tel. +33 (0)4 50 90 81 42

### PHARMACY ❄️ 🌸

**Winter season:** daily from 9 am to 12.30 pm and from 1.30 pm to 7 pm.

**Summer season:** daily from 9 am to 12.30 pm and from 4 pm to 7 pm.

Flaine Forum shopping center

Tel. +33 (0)4 50 90 82 02

### RESCUE CENTER ❄️

Departure from Grandes Platières cable car.

Tel. +33 (0)4 50 90 80 58

# Flaine informations

### FLAINE TOURIST OFFICE ❄️ 🌸

**Winter season:** daily from 8.45 am to 7 pm.

**Summer season:** daily from 9 am to 12.30 pm and from 2.30 pm to 7 pm.

**Out season:** Monday to Friday from 9 am to noon and from 1 pm to 5 pm.

Flaine Forum

Tel. +33 (0)4 50 90 80 01

welcome@flaine.com

flaine.com

### FLAINE MARKET ❄️

Every Monday from 4 pm to 7 pm at Flaine Forêt.

### POST OFFICE ❄️ 🌸

**Winter season:** open Monday, Tuesday, Wednesday, Friday from 8.30 am to 11.30 am.

**Summer season:** from Monday to Friday from 9 am to noon.

Flaine Forum - Shopping center 1<sup>st</sup> floor

Tel. +33 (0)4 50 90 85 48

### NURSERIES AND MINI-CLUBS ❄️ 🌸

Set off on the slopes or on the hikes with peace of mind when you entrust your little ones from the ages of 18 months.



### ATM ❄️ 🌸

7/7

7 am to 10 pm.

Flaine Forum - Shopping center 1<sup>st</sup> floor

### LAUNDROMAT ❄️ 🌸

Monday to Saturday 9 am to 8 pm - Sunday 10 am to 8 pm.

Flaine Forum - Shopping center 1<sup>st</sup> floor opposite UCPA les Lindars

## Internet

### ▪ Rent your pocket WiFi and stay connected everywhere!

Flaine Tourism Office, in partnership with Hippocketwifi, allows you to stay connected anywhere (slopes, room, restaurants/bars...) during your trip in Flaine.

- Avoid very expensive roaming fees during your trip in France.
- Unlimited internet access
- High-speed 4G network
- Easy to use
- Private and secure network
- Connect up to 10 devices simultaneously

Informations: [welcome@flaine.com](mailto:welcome@flaine.com)

Book it: <https://hippocketwifi.com/fr/reservez-pocket-wifi-flaine/>

- **Different bars, restaurants, shops and accommodations** suppliers throughout the resort offer this service, as well as Internet terminals, to guests.

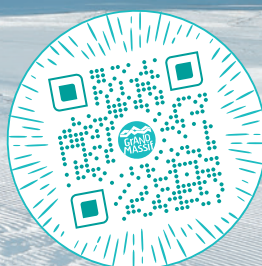


# GRAND MASSIF DOMAINES SKIABLES IS COMMITTED TO ZERO WASTE ON THE SLOPES

YOU'RE STRONG  
ENOUGH TO  
TAKE YOUR  
RUBBISH WITH YOU,  
THE BINS ARE NOT  
THAT FAR AWAY



MAP OF BIN LOCATIONS



WE'RE COUNTING ON YOU, THANKS TO OUR SUPER HÉROS !

A ZERO WASTE SKI AREA

MORE DETAILS AT [GRAND-MASSIF.COM](https://www.grand-massif.com)



# Environment

Car-free resort, transport by shuttles, links by lifts...  
A pioneer in terms of sustainable development,  
Flaine continues to launch innovative measures.

## Yesterday, a pioneer in terms of sustainable development

The first mountain resort to be equipped with **main gas**, the first to **bury its electric cables**, to get **cable TV**, to install **artificial snowmaking equipment**...Flaine was at the cutting edge right from the word go. As far as **getting around this car-free** resort is concerned, everything can be easily reached **on foot, on skis, by shuttlebus** or thanks to **2 inclined lifts**. A pioneer in terms of sustainable development, Flaine continues to launch innovative measures 50 years on.

## Today focused on ecology

### THE ENVIRONMENTAL OBSERVATORY

In 2007, Flaine ski area decided to establish an environmental observatory, which is now being extended throughout the Grand Massif. With an aim to protect and respect the exceptional natural heritage, it covers 4,219 hectares over 5 different municipalities. Its goal is to carry out exhaustive research and counts on biodiversity in all its forms: landscape, flora and fauna. This snapshot of the local biodiversity makes it possible to track growth in a factual way, to find solutions to preserve the natural environment or restore it to its original state, and to preserve zones noted as problematic by the observatory. It places great importance on its desire to be exemplary in the way actions are implemented with regards the authorities and the regulations that are in place, taking a groundbreaking approach to its projects. The work carried out comprises three areas: observations, understandings and actions.

## Tomorrow target 2030

Grand Massif Domaines Skiabes is implementing a trajectory to limit its pressure on the environment by 2030.

For each goal, the implementation of concrete actions is planned. For residual impacts, compensation measures are adopted.

- **ZERO NET CARBONE:** One more step towards 0 carbon thanks to HVO fuel / Reforestation of the territory's forests..
- **POSITIVE BIODIVERSITY:** A management plan for natural spaces in Flaine / Revegetation of work areas / Restoration of wetlands / Protection of wintering areas for Black Grouse and Ptarmigan.
- **ZERO LOST WASTE:** Target "0 trash on the ski area" / Recycling of ski lift tires.



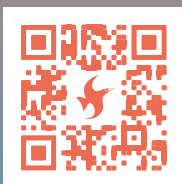
### NATURE WATCH SERVICE ❄️

A wealth of discreet mountain animals live alongside Flaine's visitors, and you can set out to discover them thanks to the **nature watch service** run, in winter.

Embark on a unique experience in the company of a mountain leader, and armed with a pair of binoculars, get to know our mountain animals, find out more about their amazing versatility and learn how we can help to protect them. **Free activity.**

# Online booking on flaine.com

For peace of mind and the best price  
when booking your holiday:  
accommodation,  
ski lesson, equipment...



## CREATOR OF MOUNTAIN HOLIDAYS DECLARE YOUR DESIRES!



ALHÉNA HOTEL & SPA - FLAINE

BOOK ON  
[MGM-HOTELS-RESIDENCES.COM](http://MGM-HOTELS-RESIDENCES.COM)



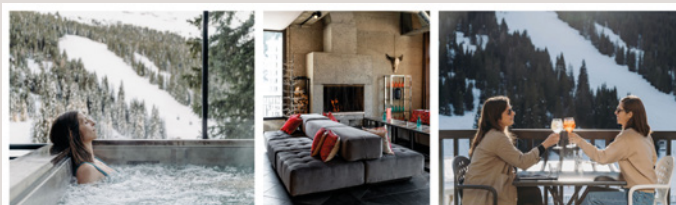
**ROCKY POP**

**GOOD VIBES ONLY**

**RESTAURANTS  
BAR  
EPICERIE  
SKISHOP  
KARAOKE**

**CHAMBRES  
APPARTEMENTS  
PENTHOUSES  
SPA NUXE  
KIDS FRIENDLY**

[rockypop.com](http://rockypop.com)

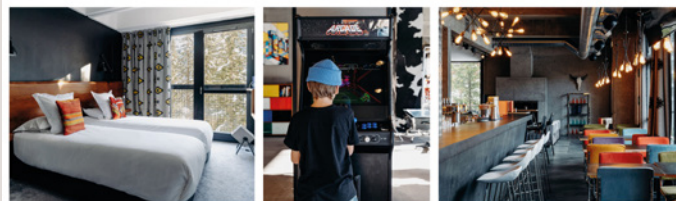


T O T E M

Friendly Hotel Flaine

**Hôtel, Restaurant & Spa**  
Eat. Ski. Sleep. Repeat!

Flaine Forum | [totem-flaine.com](http://totem-flaine.com) | +33 4 30 05 03 40

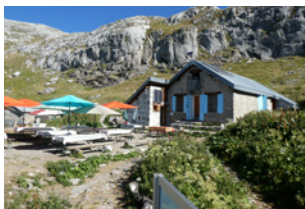
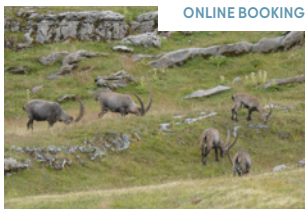




## REFUGE ❄️



## ONLINE BOOKING



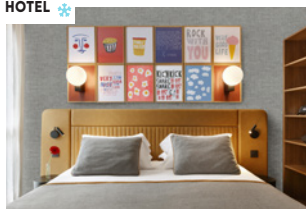
## REFUGE DE PLATÉ

Tel. +33 (0)6 63 62 42 90  
<https://refugedeplate.ffcam.fr/>

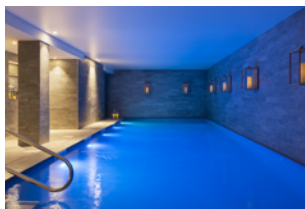
[refugedeplate74@gmail.com](mailto:refugedeplate74@gmail.com)

In summer, isolated in the heart of a wild plateau, the Refuge de Platé welcomes you for an extraordinary evening. Come and enjoy a colorful meal before a night in a rustic dormitory. Fondue, croziflette, berthoud... the warden is on hand to arrange a meal to suit your tastes. The next day, after a good breakfast, you can hike to Flaine and the Grandes Platières. Platé is a typical mountain refuge with spartan comforts: no showers, no running water. The dry toilets are at the bottom of the garden. In winter, the unguarded refuge is accessible by ski touring. It's the ideal place to switch off, refocus on the essentials, enjoy the wilderness and create unforgettable memories.

## HOTEL ❄️



## ONLINE BOOKING



## ROCKYPOP FLAINE HOTEL & SPA\*\*\*\*

Flaine Forum  
 Tel. +33 (0)4 80 16 12 21

[flaine@rockypop.com](mailto:flaine@rockypop.com)  
[www.rockypop.com](http://www.rockypop.com)

RockyPop is the new hot spot of Flaine! The joy of togetherness could be the motto of RockyPop, where is all about entertainment and the experience of living together in a fun and relaxed atmosphere. Discover the full range of practical and original services: a huge cocktail bar with games and karaoke rooms, diversified food options, 5 meeting rooms, a grocery store, a Spa by Nuxe with indoor swimming pool... To sleep, 118 rooms & apartments for 1 to 10 people!

## HOTEL ❄️



## ONLINE BOOKING



## ALHÉNA HOTEL & SPA\*\*\*\*

Flaine Front de neige

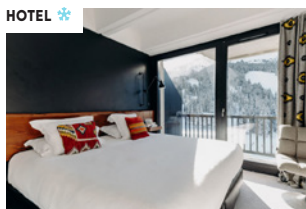
Tel. +33 (0)4 85 58 24 45

[alhena@mgm-groupe.com](mailto:alhena@mgm-groupe.com)

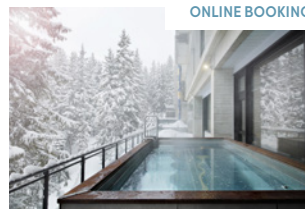
[www.mgm-hotels-residences.com/en/apartments-flaine-hotel-alhena](http://www.mgm-hotels-residences.com/en/apartments-flaine-hotel-alhena)

The Alhena hotel reinvents a true art of mountain living, putting guests at the heart of everything it does. For your comfort, the hotel offers double and family rooms. Heated indoor pool, children's pool, sauna, hammam, whirlpool, Nordic bath, sensory shower, fitness room with Technogym® equipment, Spa Montagne du Monde® treatment area with single and double cabins.

## HOTEL ❄️



## ONLINE BOOKING



## TOTEM FRIENDLY HOTEL\*\*\*

Flaine Forum  
 Tel. +33 (0)4 30 05 03 40  
 Tel. booking: +33 (0)4 30 05 03 59

[reservation@totem-flaine.com](mailto:reservation@totem-flaine.com)  
[www.totem-flaine.com](http://www.totem-flaine.com)

Ideally located at the foot of the slopes, Totem is the place to be for a stay in the heart of Flaine. Its warm and arty atmosphere makes it a unique place to ski, relax and mingle. The 96 rooms and suites offer all the comforts you could wish for, some with balconies overlooking the mountains. Enjoy a gourmet restaurant, a bar-lounge with a fireplace, a panoramic terrace, a spa with an outdoor jacuzzi, saunas and a wellness area, as well as an integrated skishop. Totem combines design, comfort and conviviality.

## UCPA LES LINDARS

### The UCPA centre 'Les LINDARS' offers:

- Ski and snowboard courses (all level) for adults (aged 18 to 40);
- 7 nights all-inclusive package: accommodation in rooms sleeping 2 or 4 pers., full board, ski pass, equipment, supervision and entertainment;
- From 2-day to 4-day breaks also available some dates.
- Center dedicated to families during school holidays.



**Centre UCPA Les LINDARS**  
**Tel. +33 (0)4 50 47 65 75**  
**flaine-lindars@ucpa.asso.fr**  
**Reservation: [www.ucpa-vacances.com](http://www.ucpa-vacances.com)**

**UCPa**

## UCPA ALTAIR

- Ski and snowboard courses (all level) for juniors (aged 11 to 17)
- 7 nights all-inclusive package: accommodation in rooms sleeping 4, full board, ski pass, equipment, supervision and entertainment;
- Weekends and 2-3-day breaks also available some dates for adultes group.

**Centre UCPA ALTAIR - Tel. +33 (0)4 50 90 82 64**  
**flaine-altair@ucpa.asso.fr**  
**Reservation: [www.ucpa-vacances.com](http://www.ucpa-vacances.com)**

**UCPa**

## REFUGE DE PLATÉ

Need a change of scenery?  
 To spend a night out of time  
 in a mountain refuge?

Tel. +33(0)6 63 62 42 90  
<https://refugedeplate.ffcam.fr/home.html>

## Private lettings

Book your holiday directly  
 with a private individual from  
 a wide choice of approved  
 furnished accommodation.



## Enjoy an All-Inclusive experience at the foot of the slopes

Restaurant • Children's clubs • Entertainment • Wellness area

**Belambra**  
 clubs

[Belambra.com](http://Belambra.com) - +33 (0)1 46 10 13 14



### Village Club MMV \*\*\* Le Flaine

Recently refurbished, the mmv MMV Village Club Le Flaine, rated 3 stars Holiday Village, welcomes you in the heart of the resort. Enjoy its lounge with the listed fireplace and the suspended terrace with a breath-taking view. Energize yourself with a unique mountain activities program. While children are in the Kids Club, get off the ski slopes non-stop or relax in the wellness area. Then enjoy your meal at the restaurant before an early evening entertainment with shows and happenings.

- Hotel services
- Full Board
- Daytime and evening entertainment
- Kids & Teens Club from 18 months to 17 years
- Children are walked to their ski lessons by MMV staff
- Wellness area : jacuzzi, sauna, hammam
- free outdoor activities

INFORMATIONS ET RÉSERVATIONS :  
**[mmv.fr](http://mmv.fr) OU + 33 (0)4 92 12 62 12**





HOLIDAYS CENTRE ❄️



ONLINE BOOKING



## UCPA SPORT VACANCES - CENTRE FLAINE LINDARS

Flaine Forum

Tel. +33 (0)4 50 47 65 75

Reservation: +33 (0)9 69 390 392

flaine-lindars@ucpa.asso.fr

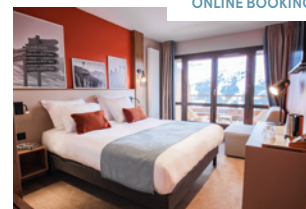
www.ucpa.com

The UCPA Lindars Center, located in the heart of Flaine Forum, welcomes you all inclusive. Thanks to this very complete formula, you benefit from all the comfort and the quality of the ski lessons.

CLUB-HOTEL ❄️



ONLINE BOOKING



## BELAMBRA FLAINE PANORAMA

Flaine Les Gérats

Tel. +33 (0)1 46 10 13 14

www.belambra.com/locations/auvergne-rhone-alpes/club-flaine-panorama-hiver

encadrement.plateau@belambra.fr

Facing the Grand Massif and directly at the foot of the slopes, come and discover the latest Belambra 5B club for your family holidays. With our all inclusive formula, we invite you to let go and put your feet under the table.

Children's clubs from 4 months to 17 years, indoor pool, Spa, 2 restaurants, bar, discover the best of the Belambra experience.

HOLIDAYS CENTRE ❄️



ONLINE BOOKING



## UCPA SPORT VACANCES - CENTRE FLAINE ALTAÏR

Front de neige

Tel. +33 (0)4 50 90 82 64

Reservation: +33 (0)9 69 390 392

flaine-altair@ucpa.asso.fr

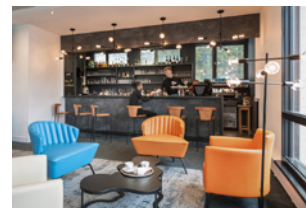
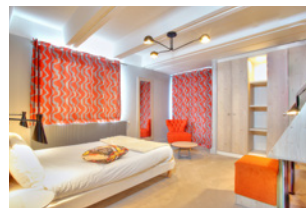
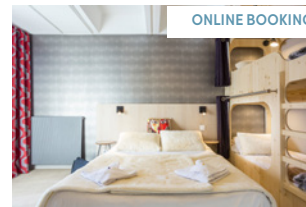
www.ucpa.com

This center offers 210 places on 3 floors away from collective areas. The rooms have been "re-designed" in the style of wooden boat cabins, and re-arranged with a sink area. They accommodate 4 or 5 people. Showers and toilets are upstairs.

CLUB-HOTEL ❄️



ONLINE BOOKING



## CLUB HOTEL MMV LE FLAINE\*\*\*\*

Flaine Forum

Tel. +33 (0)4 50 90 47 36

Tel. reservation : +33 (0)4 92 12 62 12

courrier@mmv.fr / www.mmv.fr

Set in an ideal location, just 100 metres from the top of the ski lifts, this 3-star club hotel has been recently renovated.

Many different services are available for unique family Club experiences. Run by trained activity organisers, the Kids' clubs offer fun mountain-themed activities and entertainment. The MMV apres-ski, buffets and themed dinners will delight gourmands; and last but not least, there's the Spa for some relaxation.



Flaine Réservation  
maeva Home



Astrid  
immobilier  
REAL ESTATE

### RENTAL MANAGEMENT

The **Flaine Réservation - Maeva Home** agency offers **apartments** close to the slopes, and **individual chalets** in the Hameau de Flaine for more space and comfort.

info@flaine-reservation.com  
www.flaine-reservation.com

### PURCHASE-SALE VALUATION

Our **Astrid Immobilier** experts will assist you with your projects to **buy or sell** an apartment, chalet or commercial premises.

vente@astridimmo.com  
www.astridimmo.com

**Flaine Forum**  
**+33(0)4 50 90 40 40**







# IMMOBILIÈRE RENAND

## FEEL THE DIFFERENCE !

- Menu of management services
- Weekly accommodations rentals
- Seasonal rentals
- Buy/sell property

**Find us in Flaine Forum above Tourism Office**

Tel : **+33(0)4 50 90 81 40**  
Mail : flaine@immorenand.com  
**www.immorenand.com**



**WHITE HORIZON**  
PROPERTY SERVICES

## WHITEN YOUR HORIZONS



- Tailor-made property services
- Rental Management & conciergerie
- Valuations & sales
- High quality presentation, virtual tours & video

www.whitehorizonservices.com  
☎ +33789021225 ✉ contact@whitehorizonservices.com







**BUY · SELL · RENT**  
www.mountaincollection.com



Galerie Marchande Flaine Forum  
74300 Flaine



Tél. : +33 (0)4 50 90 46 70  
E-mail : flaine@mountaincollection.com



ESTATE AGENCY ❄️🌸



ONLINE BOOKING



## FLAINE RESERVATION PRIVATE CENTRAL RESERVATION

Flaine Forum Shopping Gallery  
info@flaine-reservation.com  
www.flaine-reservation.com

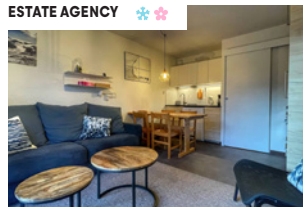
Tel. +33 (0)4 50 90 40 40  
vente@astridimmo.com  
www.astridimmo.com

Flaine Reservation - Maeva Home offers you:

- Apartments near the slopes or chalets in the Hameau de Flaine- for a weekly short stay
- Ski pass, ski classes and equipment at reduced rates

We will also assist you in your plans to buy or sell an apartment, chalet or commercial space in Flaine.

ESTATE AGENCY ❄️🌸



ONLINE BOOKING



## AGENCE IMMOBILIÈRE RENAND

Flaine Forum shopping center  
Tel. +33 (0)4 50 90 81 40

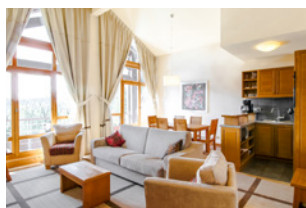
flaine@immorenand.com  
www.immorenand.com  
www.grandmassif-resa.com

This agency offers rental management services, concierge services and para-hotel services, sales and specialized purchases online and in the international market.

ESTATE AGENCY ❄️🌸



ONLINE BOOKING



## WHITE HORIZON PROPERTY SERVICES

Flaine Forum  
Tel. +33 (0)7 89 02 12 25

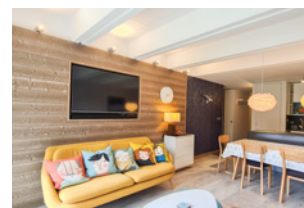
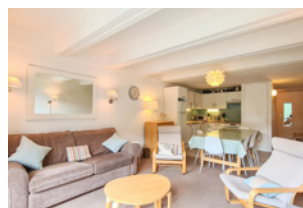
contact@whitehorizonservices.com  
www.whitehorizonservices.com

This agency offers rental & property management, bespoke conciergerie services and para-hotelier services for properties, specialized online and international rental & sales.

ESTATE AGENCY ❄️🌸



ONLINE BOOKING



## MOUNTAIN COLLECTION

Flaine Forum • Tel. +33 (0)4 50 90 46 70  
flaine@mountaincollection.com / www.mountaincollection.com

Our estate agency offers you a large choice of apartments and chalets on rental during the winter season and the summer season.

Our bilingual team can propose you:

- Special offers on package including accommodation +ski passes and ski lessons
- Services like bedlinen and towels rental, final cleaning
- The Flaine Summer Pass included in your booking of at least 6 nights during the summer season

We can also help you in purchasing or in evaluating and selling your ski property.



A HOLIDAY WHERE FIR TREES, A SPA  
AND STUNNING VALLEY VIEWS TAKE  
CENTRE STAGE

**FLAINE MONTSOLEIL**  
**Les Terrasses d'Eos \*\*\*\*\***

5-star residence with Green Key  
accreditation.  
Apartments for 4 to 10 people.  
Free access to heated outdoor pool, sauna,  
hammam and fitness studio.  
Services and shops available near  
the residence.

reception.flaine-eos@groupepvc.com  
www.pierreenvacances.com  
+33 (0)4 50 91 44 00



À CHAQUE ENVIE SES VACANCES

**FLAINE**  
**Les Terrasses d'Hélios \*\*\*\*\***

High standing tourism residence  
combining modern decoration and  
absolute comfort hotel services  
Spacious and welcoming apartments  
Ski-in/ski-out  
SPA, sauna, hammam and jacuzzi  
Indoor swimming pool  
Shops nearby

reception.flaine-helios@groupepvc.com  
www.pierreenvacances.com  
+33 (0)4 50 91 44 30



**CREATOR**  
**OF MOUNTAIN HOLIDAYS**  
DECLARE YOUR DESIRES!

ALHÉNA HOTEL & SPA - FLAINE

BOOK ON  
**MGM-HOTELS-RESIDENCES.COM**



**RESTAURANT WITH THE BEST VIEW IN FLAINE**

TO MAKE A RESERVATION CALL:

**0450 531 862**



DORMIO RESORT  
**LES PORTES DU  
GRAND MASSIF**  
FLAINE

Le Refuge

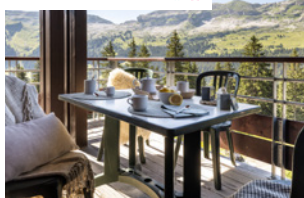


**DORMIORESORTFLAINE.FR**

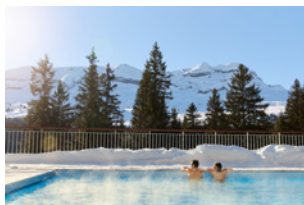
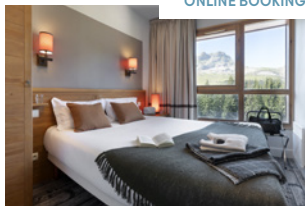




TOURIST RESIDENCE ❄️🌸



ONLINE BOOKING



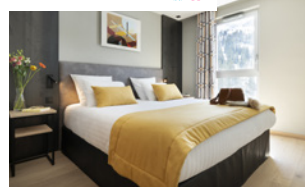
**PIERRE ET VACANCES PREMIUM  
LES TERRASSES D'EOS\*\*\*\*\***

Flaine Les G r ts  
Tel. +33 (0)4 50 91 44 00

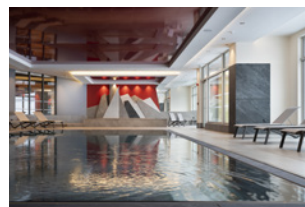
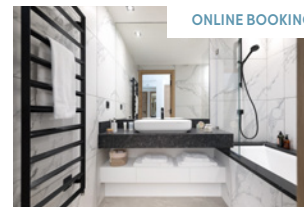
reception.flaine-eos@groupepvcp.com  
www.pierreetvacances.com

Located on the heights of Flaine, with a breathtaking view of Grand Massif area, this Premium residence is ski in/ski out. It is equipped with a wellness area with heated outdoor pool, indoor jacuzzi, sauna, steam room and fitness room.

TOURIST RESIDENCE ❄️🌸



ONLINE BOOKING

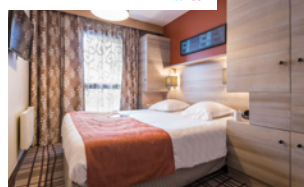


**ALH NA RESIDENCE & SPA \*\*\*\*\***

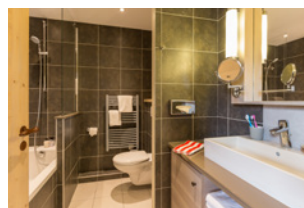
Flaine Front de Neige alhena@mgm-groupe.com Tel. +33 (0)4 85 58 24 45  
www.mgm-hotels-residences.com/en/apartments-flaine-residence-alhena

Alh na residence offers an exceptional location: ski-in/ski-out and south-facing. The residence comprises a hotel, a tourist residence and a restaurant. The flats (3 to 4 rooms) have large windows and balconies overlooking the surrounding countryside. Each flat has its own ski locker with boot dryer, private cellar and covered car park. Heated indoor swimming pool, children's pool, sauna, hammam, whirlpool, Nordic bath, sensory shower, fitness room with Technogym  equipment, Montagne du Monde  Spa treatment area with single and double cabins.

TOURIST RESIDENCE ❄️🌸



ONLINE BOOKING



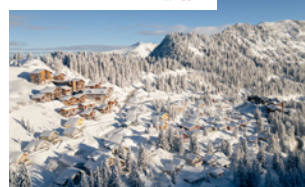
**PIERRE ET VACANCES PREMIUM  
LES TERRASSES D'HELIOS\*\*\*\*\***

Flaine Les G r ts  
Tel. +33 (0)4 50 91 44 30

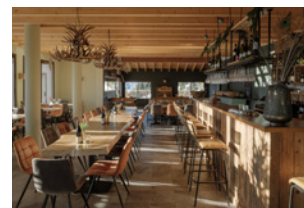
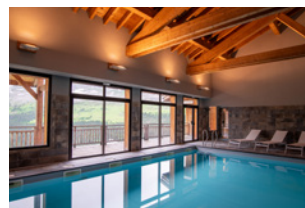
reception.flaine-helios@groupepvcp.com  
www.pierreetvacances.com

Located on the heights of Flaine, with a breathtaking view of Grand Massif area, this Premium residence is ski in/ski out. It is equipped with a wellness area with heated outdoor pool, indoor jacuzzi, sauna, steam room and fitness room.

TOURIST RESIDENCE ❄️🌸



ONLINE BOOKING




**DORMIO RESORT LES PORTES DU GRAND MASSIF\*\*\*\*\***

Flaine Les G r ts  
Tel. +33 (0)4 50 53 18 62  
www.dormio.fr/vacances/resorts/les-portes-du-grand-massif-flaine

Booking: + 33 (0)7 88 33 04 17  
reservations@dormio.fr

At 1850 meters high you will find the spacious and luxurious apartments and chalets, for 4 to 12 persons, with a spectacular view over Flaine. For most of the season, you can use the ski slope near the residence to get to the first chairlift. In the summer you can play golf on the adjacent golf course with a breath-taking panoramic view and enjoy a lot of outdoor activities. After an active day, it's time to relax in the wellness area. In our renewed restaurant, with its warm ambiance, you can enjoy culinary delights while having the most spectacular view of Flaine.

# FLATS UP TO 10 PERSONS



**ROCKY  
POP**

rockypop.com

ROCKY  
APARTEMENTS



## RESIDENCE LE PANORAMIC FLAINE

INDOOR HEATED POOL | SAUNA | HAMMAM  
APARTMENTS 4 TO 8 PEOPLE EQUIPPED  
WEEKLY RENTAL | WEEK-END | SHORT STAYS

**Odalys**  
VACANCES

+ 33 4 50 89 19 20  
accueil.panoramic@odalys-vacances.com  
odalys-vacances.com

RCS Paris 511 929 739 - Photo : Xavier




**PIERRE & VACANCES**

À CHAQUE ENVIE SES VACANCES

**FLAINE  
La Forêt \*\*\***

Located on the heights of Flaine, on the slopes, 100m from the shops and entertainment, the residence offers spacious and comfortable apartments from 2-bedrooms for 4 people in 3-bedrooms for 6 people. Possibility of short stay.

reception.flaine-foret@groupepvcv.com  
www.pierreetvacances.com  
+33 (0)4 50 90 87 99

*Madame Vacances*

**RÉSIDENCE  
LES TERRASSES DE VERET\*\*\***

Health & Fitness suite with indoor swimming pool and spa

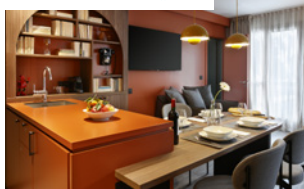
Direct access to the slopes and close to the resort centre

Indoor parking and ski lockers available

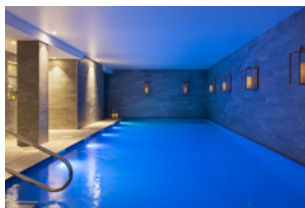
+33 (0)4 79 65 08 41  
www.madamevacances.com



TOURIST RESIDENCE ❄️



ONLINE BOOKING



## ROCKYPOP FLAINE APPARTEMENTS & SPA \*\*\*\*

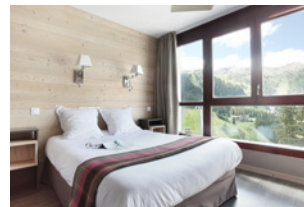
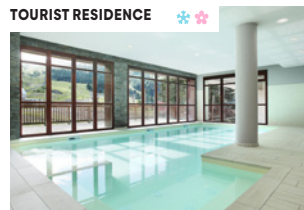
Bâtiment Aujon - Flaine Forum  
Tel. +33(0)4 80 16 12 21

flaine@rockypop.com  
www.rockypop.com

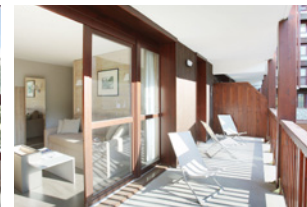
RockyPop is the new hot spot of Flaine! The joy of togetherness could be the motto of RockyPop, where is all about entertainment and the experience of living together in a fun and relaxed atmosphere. Discover the full range of practical and original services: a huge cocktail bar with games and karaoke rooms, diversified food options, 5 meeting rooms, a grocery store, a Spa by Nuxe with indoor swimming pool...

To sleep, studios and apartments up to 10 people!

TOURIST RESIDENCE ❄️



ONLINE BOOKING



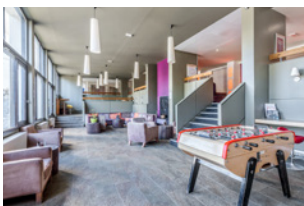
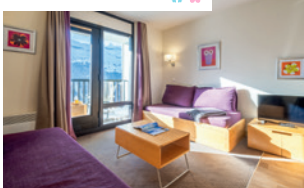
## RESIDENCE ODALYS LE PANORAMIC\*\*\*

Flaine Forêt  
Tel. +33 (0)4 50 89 19 20  
www.odalys-vacances.com/location-montagne/haute-savoie/flaine/

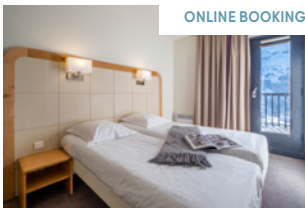
Booking: +33 (0)8 25 56 25 62 (0.18 €/min)  
adv@odalys-vacances.com  
www.odalys-vacances.com/location-montagne/haute-savoie/flaine/

The residence, "ski in-ski out", offers fully equipped apartments, accommodating up to 8 people. By booking with Odalys, you can access discounts on ski passes, ski equipment and ski lessons. Indoor heated swimming pool, sauna and hammam. In summer: 2 free hikes with professional and free activities with Flaine Summer Pass.

TOURIST RESIDENCE ❄️



ONLINE BOOKING



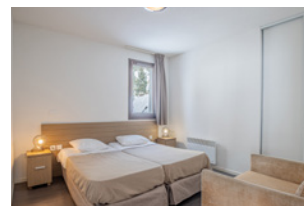
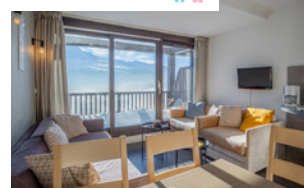
## PIERRE ET VACANCES RESIDENCE LA FORÊT\*\*\*

Flaine Forêt  
Tel. +33 (0)4 50 90 87 99

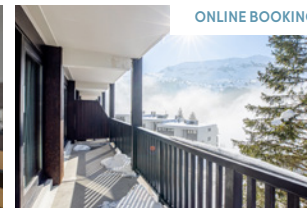
reception.flaine-foret@groupepvcv.com  
www.pierreetvacances.com

Located on the heights of Flaine, on the slopes, 100m from shops and entertainment, the residence offers spacious and comfortable apartments from 2-rooms for 4 people to 3-rooms for 6 people. Possibility of short stays.

TOURIST RESIDENCE ❄️



ONLINE BOOKING



## MADAME VACANCES - LES TERRASSES DE VERET\*\*\*

Flaine Forêt  
Tel. +33 (0)4 79 36 36 51  
Tel. reservation : +33 (0)4 79 65 08 41

clients@madamevacances.com  
www.madamevacances.com

The residence welcomes you in spacious, comfort and modern apartments, with a fully equipped kitchen and a terrace or a balcony opening onto the resort. After a day on the slopes or hiking, you will have to walk only a few steps to come back to Les Terrasses de Vêret residence and take advantage of the swimming pool. Comfortably settled in the exterior jacuzzi, all you will have to do is marvel at the panoramic view surrounding mountains.

# SIMOND

## SPORTS



- **Flaine Forum :**  
Résidence Aldébaran,  
near the cable car  
Tel. +33 (0)4 50 90 80 97
- **Flaine Forêt :**  
Pierre et Vacances  
Tel. +33 (0)4 50 90 85 39
- **Flaine Front de neige :**  
Hotel & residences Alhéna  
Tel. +33(0)4 50 90 80 97

**SALES** • Fusalp, Colmar, Spyder, Millet, Timberland, MOON BOOT, Uvex, Bollé, Julbo.

**RENTAL** • Skis - Snowboard - Ski touring equipment - Cross country skiing

**REPAIR / PREPARATION WORKSHOP**

## SIMOND SPORTS

Résidence Aldébaran - 74300 FLAINE FORUM

Tel. +33 (0)4 50 90 80 97

sm@simond-sports.com - [www.simond-sports.com](http://www.simond-sports.com)

Tel. +33 (0)4 50 90 99 41  
ludo.olivar@gmail.com  
extrem-mountain.com



**FORUM**  
Extrem Mountain  
next to tourist office



• Technical clothing  
sport and fashion

• Board shop

• Hire ski and snowboard

7/7 - 8.30 am - 7.30 pm

• Repair and maintenance workshop

• Boot fitting

SKISHOP  
**HELIOS**  
café

Tel. +33 (0)4 50 90 80 97  
+33 (0)4 50 47 75 34

sm@skishop-helios.com  
[www.skishop-helios.com](http://www.skishop-helios.com)



# BLACKside.

[www.blackside.fr](http://www.blackside.fr)

Partenaire :

**Netski.**

## TECHNICAL CLOTHING



Open:  
8 am - 7.30 pm

Show your **BONUS CARD DISCOUNT**

➔ **Discount 20% on rental**

Tel. +33 (0)4 50 90 83 06

2 sport shops in Flaine

**General Sport**

Flaine - Le Hameau  
04 50 90 87 16

**SKISET**

**Snow Service**

Flaine - Forêt  
04 50 90 87 12

RENTAL - SALE - REPAIR/TUNING

Save up to 40% buy booking on [ski-rental-flaine.com](http://ski-rental-flaine.com)

[ski-rental-flaine.com](http://ski-rental-flaine.com) - [info@ski-rental-flaine.com](mailto:info@ski-rental-flaine.com)



## Flaine Super Ski

Technical Center

RENTAL / SALE / REPAIRS

Ski boots specialist, boot fitting, racing, ski touring • 3 shops

**Flaine les Gérats**  
Rés. Les Portes du Grand Massif  
Tel. +33 (0)4 50 18 74 88

**Flaine Forum**  
Im. Aldebaran  
Tel. +33 (0)4 50 90 82 88

**Flaine Forêt**  
Galerie marchande  
Tel. +33 (0)4 50 90 30 62

Online reservation, - 20 % to - 45 %

[www.flainesuperski.com](http://www.flainesuperski.com)



## BLACK SIDE - NETSKI ❄️❄️

**Flaine Forum**

Tel. +33 (0)4 50 90 83 06

jm@blackside.fr

www.blackside.fr

The Flaine's freeride, snow/ski shop.

Open from 8.30 am till 7.30 pm nonstop.

## SKISET FORUM - BOUTIQUE EXTREM MOUNTAIN ❄️❄️

**Flaine Forum**

Tel. +33 (0)4 50 90 99 41

contact@extrem-mountain.com

www.skiset.com

Snowsports equipment rental (ski, snowboard, snow shoes, ski touring...) and electric mountain bike rental (summer). Men's, women's and children's ski clothing, technical ski clothing and accessories available to buy.

## SKISET GÉNÉRAL SPORT ❄️

**Flaine Les Gérats - Hameau de Flaine**

Tel. +33 (0)4 50 90 87 16

## SKISET SNOW SERVICE ❄️

**Flaine Forêt - Galerie marchande**

Tel. +33 (0)4 50 90 87 12

info@ski-rental-flaine.com

www.ski-rental-flaine.com

2 shops open daily.

Rental and sale of ski equipment and accessories. Panoramic webcam. 2 repair and maintenance workshops.

## SPORT 2000 - FLAINE SUPER SKI ❄️

**Flaine Les Gérats - Les Portes du Grand Massif residence**

Tel. +33 (0)4 50 18 74 88

magasin@flainesuperski.com / www.flainesuperski.com

**Flaine Forum**

**Flaine Forêt**

Tel. +33 (0)4 50 90 82 88

Tel. +33 (0)4 50 90 30 62

3 shops. Rental and sale. Specialists in competition, boot fitting and ski touring.

## SIMOND SPORTS - SKIMIUM ❄️

sm@simond-sports.com / www.simond-sports.com

3 shops.

**Flaine Front de neige**

**Flaine Forum**

**Flaine Forêt**

Hotel & residences Alhena

Tel. +33 (0)4 50 90 80 97

Tel. +33 (0)4 50 90 85 39

Tel. +33(0)4 50 90 80 97

The quality of major brands combined with a personalized approach.

## SKISHOP HELIOS ❄️

**Flaine Les Gérats - Residence Les Terrasses d'Hélios**

Tel. +33 (0)4 50 90 80 97

+33 (0)4 50 47 75 34

sm@skishop-helios.com

www.skishop-helios.com

A warm welcome and a high level of expertise are the main arguments for our business, which is entirely devoted to skiing in all its forms.



# Taxis & transport

## Taxis

### MONT-BLANC TAXI

Airports, bus and train stations transfers. Mini-bus service. Services for reduced mobility travelers.

Tel. +33 (0)6 16 768 768  
+33 (0)4 50 900 745  
info@montblanc-taxi.com  
www.montblanc-taxi.com

### TAXI MERMI'YAUTE

A 5-seater taxi that can accommodate 4 passengers, with the option of a baby seat (on request). Transfers to and from airports, stations and other destinations. All distances, 7 days a week. Various meeting points in Flaine.

Tel. +33 (0)6 13 27 28 76  
taximermi.yaute@gmail.com

### TAXI RHÔNE-ALPES

Hospital, airports, bus and train stations transfers. Any distances. 7/7. Services for reduced mobility travelers.

Tel. +33 (0)6 83 96 88 94  
taxi.rhone-alpes@hotmail.fr

### TRANSÈVÈNEMENTS

All-distance transport for up to 7 people, enclosed luggage trailer - 24/7.

Package rates for day and weekend outings: Annecy - Chamonix - Grenoble...

Tel. +33 (0)6 67 80 07 02  
transevenements@yahoo.fr

## Individual and group transport

### ALPS-DIRECT.COM

Group and individual transport. Airports, bus and train stations. Any distances, 7/7.

Tel. +33 (0)6 12 98 12 50  
+33 (0)4 50 90 30 08  
info@alps-direct.com  
www.alps-direct.com

### ERICA TRANSFERTS

Group and individual transfers, 9-seater vehicles "4 motion". Airports, train stations, bars/ restaurants/nightclubs, excursions, ski trip and off-piste recovery - 24/7.

Tel. +33 (0)6 23 25 00 72  
mail@ericatransfers.com  
www.ericatransfers.com

### FMJ VOYAGE

Group and individual transport. Airports, bus and train stations. 7/7. Excursions.

Tel. +33 (0)4 50 89 56 37  
info@fmj-transport.com  
www.fmj-voyage.com

### GO MASSIF

Passenger transport between Flaine and Geneva airport.

Online booking  
www.gomassif.com

### LES CARROZ TRANSFERT

Airports / train stations / inter ski resort / tailor-made transport service.

Tél. +33 (0)6 83 86 51 20  
lescarroztransfert@gmail.com  
www.lescarroz-transfert.com

## Electric car charging points

Flaine is continuing its environmental and ecological commitment with the installation of 4 electric car charging points at the entrance to Flaine Forum and in the P3 car park in Flaine Forêt. These SYANE public network charging points will be open without access restrictions. Any user will be able to access them 24 hours a day, 7 days a week, regardless of the type of vehicle used.

### TAXI MERMI'YAUTE

Welcome aboard! Taxi for 4 passengers, with baby seat available (on request). Transfers to and from airports, train stations and other destinations. All distances, 7/7.

Tel. +33 (0)6 13 27 28 76  
taximermi.yaute@gmail.com



### TRANSÈVÈNEMENTS

Transfers to airports (Geneva, Lyon, Chambéry) and all stations. Closed luggage trailer, vehicle for up to 7 people, 24/7. All-inclusive rates available for day/weekend trips.

Tel. +33 (0)6 67 80 07 02 • transevenements@yahoo.fr

### MONT-BLANC TAXI

- Resort, Geneva airport, train stations transfers
- Repatriation
- 8-seater minibus WW Confort 4x4

Tél/Fax +33 (0)4 50 90 07 45 +33 (0)6 16 768 768  
info@montblanc-taxi.com • www.montblanc-taxi.com



### TAXI RHÔNE ALPES

- Hospital, airport, bus and train stations transfers. Any distances. 7/7.
- 9-seater minibus - 4x4.
- Services for reduced mobility travelers.

Tel. +33 (0)6 83 96 88 94 • taxi.rhone-alpes@hotmail.fr



**EBA EUROBUS****Regular bus line Flaine ↔ Geneva Airport.**

On Saturdays and Sundays, from Geneva, return transport by the day with Grand Massif ski pass included.

<https://eba-eurobus.com/skibus>

Tel. +41 22 731 01 19 • [booking@eba-eurobus.com](mailto:booking@eba-eurobus.com)



**GOMASSIF.COM**

**Geneva Airport ↔ Flaine**

Shared and private transfers

Online prices and reservations

**FMJ Voyage**

Transfers airports, train stations and other destinations - 7/7

Organising trips, excursions and sightseeing tours

Tel. +33 (0)4 50 89 56 37 - [info@fmj-transport.com](mailto:info@fmj-transport.com)

[www.fmj-voyage.com](http://www.fmj-voyage.com)

**AIRPORT TRANSFERS • ALL DISTANCES**

+33 (0)4 50 90 30 08

+33 (0)6 12 98 12 50

[www.alps-direct.com](http://www.alps-direct.com)

[info@alps-direct.com](mailto:info@alps-direct.com)

**LES CARROZ TRANSFERT**

Airports / train stations / inter ski resort /  
tailor-made transport service

Tel. +33 (0)6 83 86 51 20 - [lescarroztransfert@gmail.com](mailto:lescarroztransfert@gmail.com)

[www.lescarroz-transfert.com](http://www.lescarroz-transfert.com)

**erica transferts**

+33 06 23 25 00 72

[mail@ericatransferts.com](mailto:mail@ericatransferts.com)



Genève <> Flaine  
Cluses <> Flaine  
Samoëns <> Flaine

All destinations 24/7

# Easy access

**Resort with a pedestrianised centre**

With a compact pedestrianised centre with services, shops, leasures areas and lifts all just a stone's throw from your accommodation.

**Free shuttle buses**

They run throughout the day between Flaine Forêt, the Hameau de Flaine and the Col de Pierre Carrée (in winter: nordic area and in summer: golf course).

In summer, free shuttles run daily between Les Carroz and Flaine.

## Bus transfers

**Cluses train station**

Several buses run every day in winter and in summer. Reservations mandatory.

*Les Carroz-Flaine Express line.*

Tel. +33 (0)4 50 91 49 96 • [www.arvi-mobilite.fr](http://www.arvi-mobilite.fr) • [www.altibus.com](http://www.altibus.com)

**Geneva airport and train station**

Contact EBA Eurobus bus company, the taxis, the individual and group transports.

**EBA Eurobus +41 22 731 01 19**

[booking@eba-eurobus.com](mailto:booking@eba-eurobus.com)

<https://eba-eurobus.com/winter-regular-line/geneva-flaine>

*Mandatory booking.*

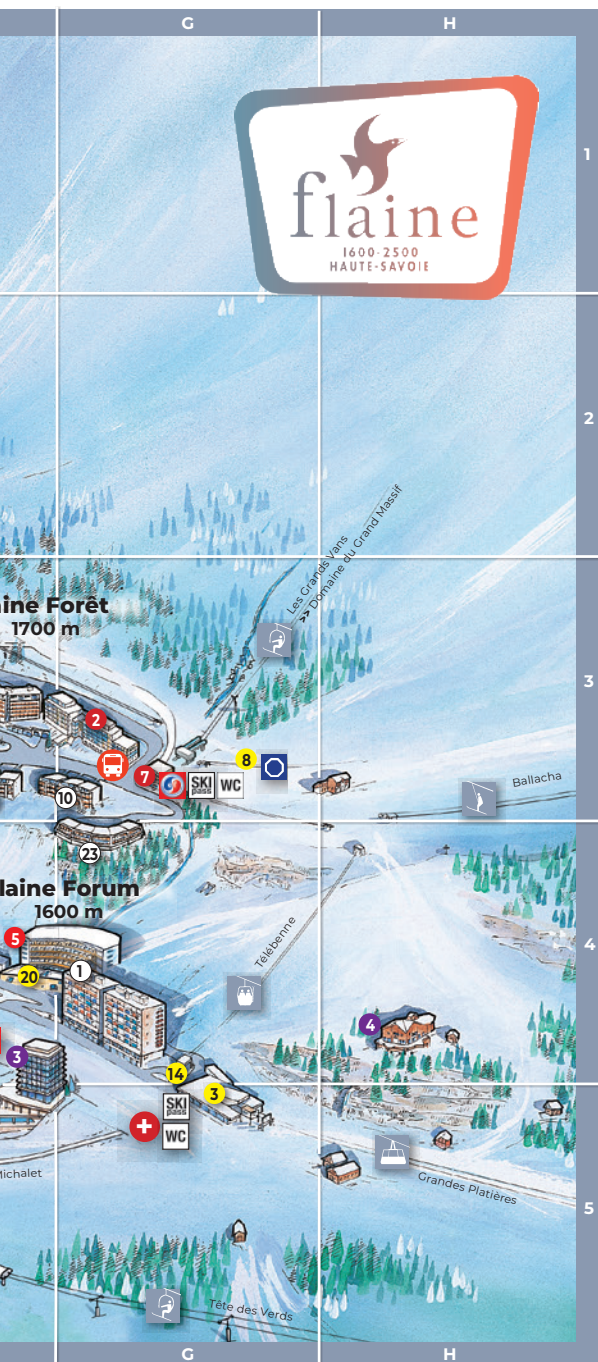




# Resort map







flaine.com

## SERVICES

- 1 E4 Police - School  
Syndicat Intercommunal
- 2 E3 Auditorium
- 3 G5 Ski lift office
- 4 E4 Medical center
- 5 E4 Chapel
- 6 E4 Heating plant
- 7 F4 Cinéma
- 8 G3 Club "Little One"/ESI
- 9 F4 Forum shopping center
- 10 E3 Forêt shopping center
- 11 F4 Nursery
- 12 F4 Post office
- 13 F4 Pharmacy
- 14 G5 Rescue center
- 15 E4 Technical office
- 16 F4 Library / Art center
- 17 C5 Urban waste
- 18 C3 Fireman
- 19 D3 Welcome office (car park)
- 20 F4 Public pool
- 21 A2 Général Store
- 22 F4 Laundry

## HOTELS

- 1 F4 Totem Friendly Hotel\*\*\*
- 2 E4 Rockpop Flaine Hotel & Spa\*\*\*\*
- 3 F4 Alhéna Hotel & Spa\*\*\*\*
- 4 H4 Lapiaz Hotel

## TOURIST RESIDENCES

- 1 F3 La Forêt\*\*\*
- 2 G3 Les Terrasses de Veret\*\*\*
- 3 C2 Les Terrasses d'Eos\*\*\*\*\*
- 4 B1 Les Portes du Grand Massif\*\*\*\*
- 5 F4 Le Centaure\*\*\*\*
- 6 C2 Les Terrasses d'Hélios\*\*\*\*\*
- 7 G3 Le Panoramic\*\*\*
- 8 F5 Alhéna Residence & Spa\*\*\*\*\*

## HOLIDAY CENTRES

- 1 D4 U.C.P. A. Altaïr
- 2 F4 U.C.P. A. Les Lindars

## CLUB-HOTELS

- 1 E4 MMV Hôtel Club Le Flaine\*\*\*\*
- 2 B2 Belambra Panorama\*\*\*\*

## CHALETs

- 1 C1 Chalet Masson du 27\* BCA
- 2 C2 Chalet de la FMG

## ESTATE AGENCIES

- 1 F4 Flaine Réservation Maeva home
- 2 F4 Mountain Collection
- 3 F4 Agence Immobilière Renand
- 4 F4 White Horizon Property Services

## APARTMENTS BLOCKS

- 1 G4 Aldébaran
- 2 F3 Andromède
- 3 E5 Antarès
- 4 D3 Arche
- 5 F3 Balance
- 6 F3 Bélier
- 7 E5 Bellatrix
- 8 E4 Bételgeuse
- 9 E5 Capella
- 10 G3 Capricorne
- 11 F4 Cassiopée
- 12 F3 Castor
- 13 B2 Châteaux de Cran
- 14 F5 Deneb
- 15 D3 Doris
- 16 D4 Eridan
- 17 E3 Gémeaux
- 18 E3 Pégase
- 19 E3 Grande Ourse
- 20 D3 Iris
- 21 E3 Pollux
- 22 G4 Grand Vans
- 23 E3 Sagittaire
- 24 E3 Sirius
- 25 E4 Vega
- 26 E3 Verseau
- 27 D4 Étoile polaire
- 28 E3 La Petite Ourse
- 29 D3 Les Pléiades



S/PRO SUPRA DUAL BOA® 120

**UNLOCK  
YOUR FULL  
POTENTIAL.**



**SALOMON**